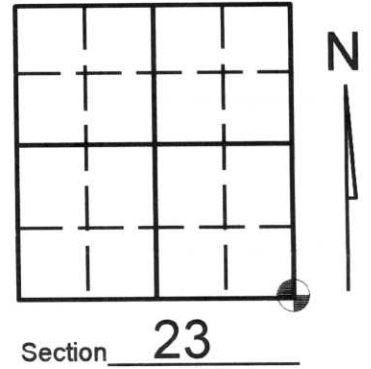


U.S. PUBLIC LAND SURVEY MONUMENT RECORD

Note: This form is intended and designed to fulfill all requirements of Wisconsin Administrative Code, Chapter A-E 7.08 U.S. Public Land Survey Monument Record (3)(a)(b)(c)(d)(e)(f)(g)(h)(i). An additional sheet may be added if necessary to conform with said requirements.

(a) Corner location: Township 32 North
Range 08 (East West)

Town/City/Village SCHLEY
County LINCOLN

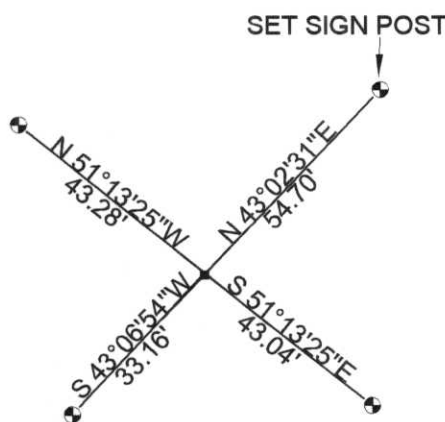


(b) (f) (g) (h) Description of monument found at this corner and if it was accepted, state all evidence (material, testimonial, occupational, plats, records, other monuments) used as a basis for accepting. If not accepted or if nothing was found, state evidence used as basis for establishing location. If reestablished through lost corner proportionate methods, indicate all monuments, distances and directions used to establish. Indicate type of monument found or set and sign post.

-1800'S - GOV'T SET WOODPOST

-2001- KEVIN BIXBY FOUND GRANITE STONE MONUMENT AND WITNESSED AS SHOWN BELOW

(c) (d) (e) Plan view of corner with ties to at least 4 witness monuments. If in disagreement with previously established corner, show the distances between the two corners and also indicate the ties to the disputed corner.



RECEIVED AT LINCOLN COUNTY
COURTHOUSE THIS 27TH DAY
OF December 20 01
Tony Dalton
LAND INFORMATION OFFICE

LEGEND

- FOUND 6" X 6" GRANITE MONUMENT
- SET L.C.W.M.

NOTE: BEARINGS AND DISTANCES MEASURED WITH A TOTAL STATION NOT TO SCALE

(i) I, KEVIN P. BIXBY

(type or print name) certify that the corner location on this record was determined by me or under my direction and control and that this U.S. Public Land Survey Monument Record is correct and complete to the best of my knowledge and belief.



Index No. Q-21

Kevin P. Bixby
Signature Date 12/26/01

Stamp