

U.S. PUBLIC LAND SURVEY MONUMENT RECORD

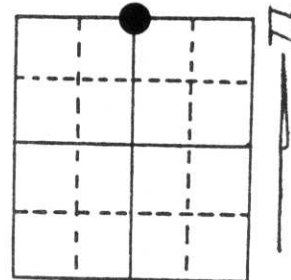
Note: This form is intended and designed to fulfill all requirements of Wisconsin Administrative Code, Chapter A-E 5.02, U.S. Public Land Survey Monument Record (3) (a) (b) (c) (d) (e) (f) (g) (h) (i). An additional sheet may be added if necessary to conform with said requirements.

(a) Corner location: Township 32 North

Range 8 East

Town/City/Village TOWN OF SCHLEY

County LINCOLN

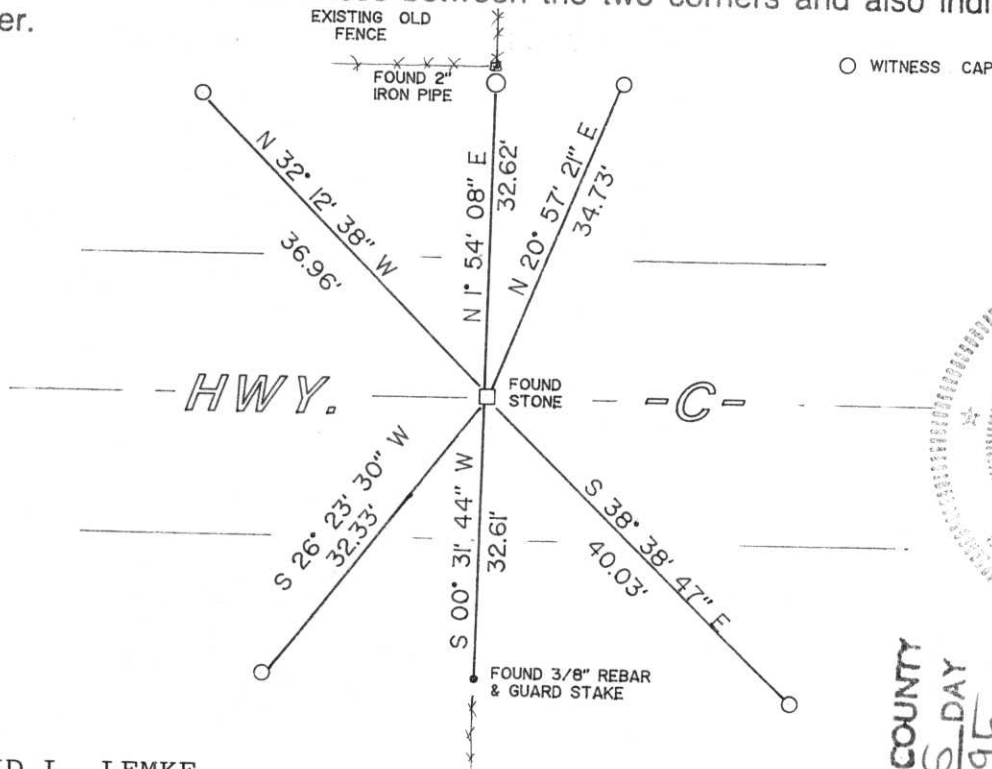


Section 30

(b) (f) (g) (h) Description of monument found at this corner and if it was accepted, state all evidence (material, testimonial, occupational, plats, records, other monuments) used as a basis for accepting. If not accepted or if nothing was found, state evidence used as basis for establishing location. If reestablished through lost corner proportionate methods, indicate all monuments, distances and directions used to establish.

FOUND A 2" PIPE ON THE NORTH SIDE OF THE HIGHWAY WITH AN EXISTING OLD FENCE AND CUT LINE RUNNING NORTH. ALSO FOUND A 3/8" REBAR WITH A RED TOP GUARD STAKE ON THE SOUTH SIDE OF THE HIGHWAY. EXCAVATED THE HIGHWAY AND FOUND A GRANITE STONE ± 2' BELOW THE PAVEMENT. SET A 1" BAR ON THE NORTH SIDE OF THE STONE.

(c) (d) (e) Plan view of corner with ties to at least 4 witness monuments. If in disagreement with previously established corner, show the distances between the two corners and also indicate the ties to the disputed corner.



(i) I, DAVID L. LEMKE
 (type or print name) certify that the corner location on this record was determined by me or under my direction and control and that this U.S. Public Land Survey Monument Record is correct and complete to the best of my knowledge and belief.

David Lemke
 Signature

MAY 02 1995
 Date

RECEIVED AT LINCOLN COUNTY COURTHOUSE THIS 25 DAY OF May 1995
 TAX DESCRIPTION OFFICE

Index No. Q-3