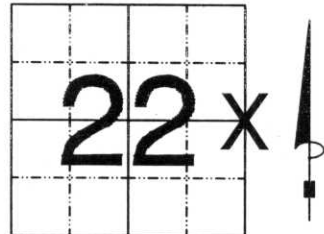


# U.S. PUBLIC LAND SURVEY MONUMENT RECORD

NOTE: THIS FORM IS INTENDED AND DESIGNED TO FULFILL ALL REQUIREMENTS OF WISCONSIN ADMINISTRATIVE CODE, CHAPTER A-E 7.08 U.S. PUBLIC LAND SURVEY MONUMENT RECORD (3) (a) (b) (c) (d) (e) (f) (g) (h) (i). AN ADDITIONAL SHEET MAY BE ADDED IF NECESSARY TO CONFORM WITH SAID REQUIREMENTS.

(a) CORNER LOCATION: TOWNSHIP 32 NORTH  
 RANGE 8 EAST/~~WEST~~  
 TOWN/~~CITY/VILLAGE~~ SCHLEY  
 COUNTY LINCOLN



SECTION 22

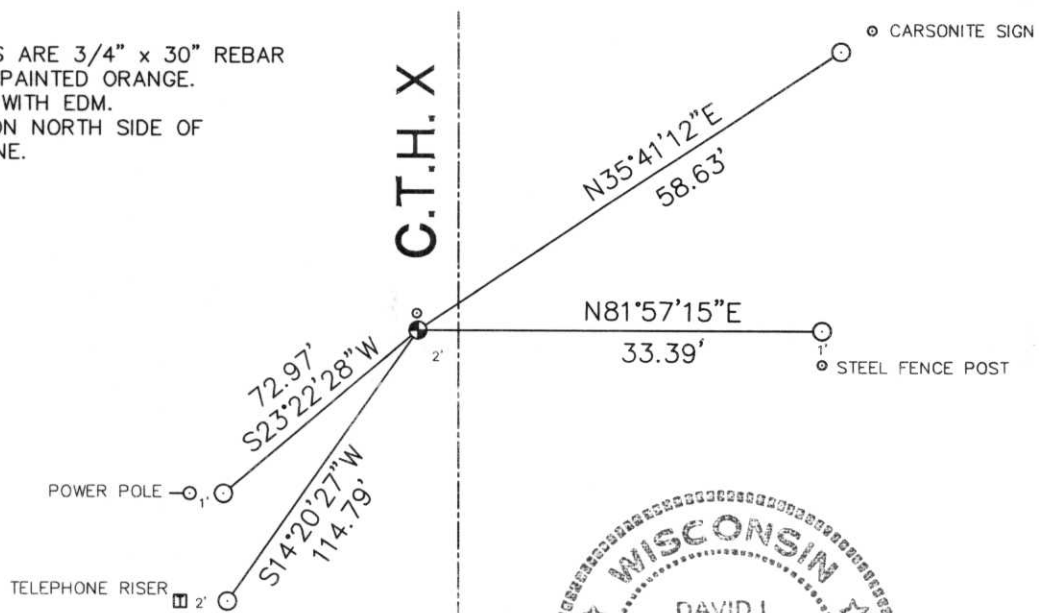
(b) (f) (g) (h) DESCRIPTION OF MONUMENT FOUND AT THIS CORNER AND IF IT WAS ACCEPTED, STATE ALL EVIDENCE (MATERIAL, TESTIMONIAL, OCCUPATIONAL, PLATS, RECORDS, OTHER MONUMENTS) USED AS BASIS FOR ACCEPTING. IF NOT ACCEPTED OR IF NOTHING WAS FOUND, STATE EVIDENCE USED AS BASIS FOR ESTABLISHING LOCATION. IF REESTABLISHED THROUGH LOST CORNER PROPORTIONATE METHODS, INDICATE ALL MONUMENTS, DISTANCES AND DIRECTIONS USED TO ESTABLISH. INDICATE TYPE OF MONUMENT FOUND OR SET AND SIGN POST.

DUG WITH COUNTY BACKHOE THROUGH 8" BLACK TOP, 6" SAND FILL. FOUND GRANITE STONE, WITH LINE CARVED IN TOP. LOOKED UNDISTURBED, HELD AS CORNER. I PUT A 3/4" IRON BAR ON NORTH SIDE OF STONE. HIGHWAY CREW SAID THEY WOULD PUT A STEEL PLATE ON TOP OF STONE BEFORE THEY BURIED IT. TIED OUT. SECTION SUMMARY ON BACK.

RECEIVED AT LINCOLN COUNTY  
 COURTHOUSE THIS 28th DAY  
 OF Oct 19 99  
*Pat Priebe*  
 LAND INFORMATION OFFICE

(c) (d) (e) PLAN VIEW OF CORNER WITH TIES TO AT LEAST 4 WITNESS MONUMENTS. IF IN DISAGREEMENT WITH PREVIOUSLY ESTABLISHED CORNER, SHOW THE DISTANCES BETWEEN THE TWO CORNERS AND ALSO INDICATE THE TIES TO THE DISPUTED CORNER.

ALL WITNESS CORNERS ARE 3/4" x 30" REBAR WITH ALUMINUM CAP, PAINTED ORANGE. ALL DISTANCES SHOT WITH EDM. SET 3/4" IRON BAR ON NORTH SIDE OF 6" x 6" GRANITE STONE.



(i) I, DAVID L. OSTERBRINK RLS  
 (TYPE OR PRINT NAME) CERTIFY THAT THE CORNER LOCATION ON THIS RECORD WAS DETERMINED BY ME OR UNDER MY DIRECTION AND CONTROL AND THAT THIS U.S. PUBLIC LAND SURVEY MONUMENT RECORD IS CORRECT AND COMPLETE TO THE BEST OF MY KNOWLEDGE AND BELIEF.

*David L. Osterbrink* 10-15-99  
 SIGNATURE DATE



STAMP

INDEX NO. 0-17

# SECTION SUMMARY

## SECTION 22, T32 N. R 8 E

### TOWN OF SCHLEY

