

# LINCOLN COUNTY U.S. PUBLIC LAND SURVEY MONUMENT LOCATION RECORD

SECTION 21  
TOWNSHIP 32  
RANGE 8

0-13  
NO.

LANDMARK       BENCHMARK \_\_\_\_\_

FOUND   
SET   
RESET   
RE-TIED

CORNER IDENTITY: EAST 1/4, SEC. 21 8"x8" STONE

SCHLEY  
~~CITY, VILLAGE, TOWN~~

LINCOLN COUNTY COORDINATE: N: \_\_\_\_\_

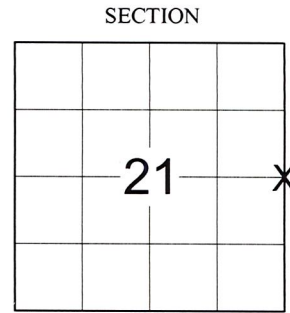
E: \_\_\_\_\_

ELEVATION-(FEET): \_\_\_\_\_ DATUM: \_\_\_\_\_

WEATHER: \_\_\_\_\_ SUNNY

DATE OF SURVEY: 9/01/21 TEMPERATURE: 74 °F

SURVEY PARTY: NATHAN WINCENTSEN & SAM HAUGEN



LOCATION  
(Indicated By X)

## BASIS FOR MONUMENT LOCATION:

(DESCRIBE METHOD OF SURVEY AND CORNER AUTHENTICATION)

5/9/1985 - E. Abendroth visited this corner location and found a 8"x8" granite stone with bottom part of cedar post along side stone. Cedar post was removed and brought to County Surveyor's Office. An iron pipe was set to aid in location of the stone.

9/1/2021 - We visited this corner and recovered the 8"x8" granite stone of record 1.4' below the existing grade of the gravel road. Iron pipe was found laying flat with South end of pipe along North end of stone. The granite stone was accepted as the corner. Set new ties to the Northwest and Southwest to perpetuate the corner location as shown below.

FIELD BOOK NO. NA PAGE NO. NA

COMPANY RIVERSIDE LAND SURVEYING LLC

CERTIFIED CORRECT:

*Nathan J. Wincentsen*

NATHAN J. WINCENTSEN S-2539  
Professional Land Surveyor

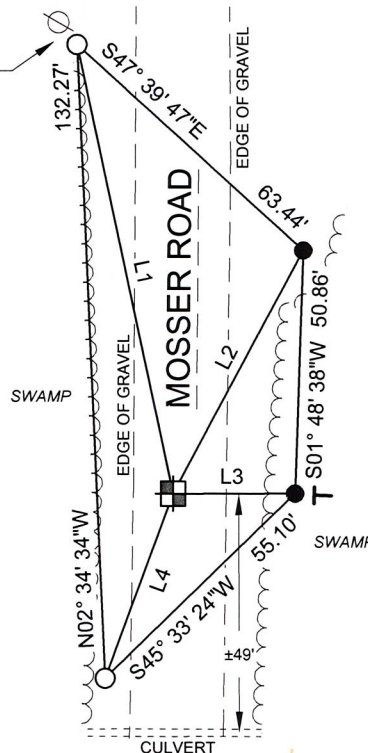
DATE: OCTOBER 29TH 2021



## TIE SKETCH:

RECEIVED BY LINCOLN COUNTY SURVEYOR THIS 5TH DAY OF November 20 21  
*Tamy Dahl*  
COUNTY SURVEYOR

- 8"x8" STONE MONUMENT (1.4' BELOW GRADE)
- SET 7/8"x30" REBAR WITH 2-1/2" ALUMINUM CAP
- FOUND 1-1/4" O.D. IRON PIPE
- EXISTING UTILITY POLE
- SET VINYL "T" POST



LINE TABLE		
LINE #	BEARING	DISTANCE
L1	N12° 03' 50"W	95.79'
L2	N27° 48' 14"E	57.61'
L3	N89° 43' 40"E	25.26'
L4	S20° 06' 04"W	40.96'

BEARINGS ARE BASED ON THE LINCOLN COUNTY COORDINATE SYSTEM NAD 83 (2011) AND REFERENCED AS SHOWN

THIS DRAWING IS NOT TO SCALE

0-13  
NO.

CERTIFIED LAND CORNER RESTORATION

Index No. 0-13

State of Wisconsin }  
County of Lincoln } ss.

I Edwin R. Abendroth  
do hereby  
certify that on the 9th day  
of May 19.85, I found  
evidence of the West 1/4  
corner of Section 22  
Township 32, North, Range  
8 East, Fourth, Principal Meridian,  
as described hereon; and that from this evidence  
I established a new monument and accessories  
as described hereon to perpetuate the original  
location of this corner.

Resident witnesses:

Pat Ryan

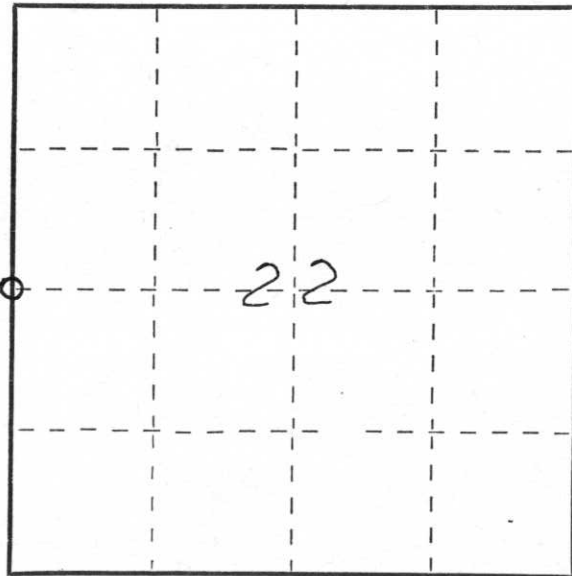
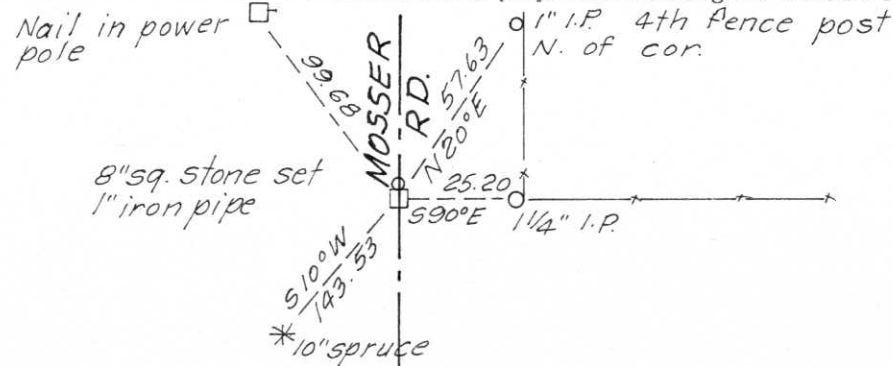
History of original corner establishment:

Wood post set by original Government survey

Description of corner evidence found:

Found 8" X 8" Granite stone with bottom part of cedar post along side  
removed cedar post and brought to County Surveyor's Office. Set iron  
pipe to aid in location.

Description of monument and accessories I established to perpetuate the original location of this corner.



○ = Corner monument restored.

Dated at Wausau, Wis., this 13th day of May 19 85

Signature Edwin R. Abendroth Title Surveyor Registration No. S-798  
(County Surveyor, Registered Land Surveyor, or other duly authorized official)

Office of Register of Deeds, County of \_\_\_\_\_, I hereby certify that the within  
instrument was filed in this office for record on the \_\_\_\_\_ day of \_\_\_\_\_, 19\_\_\_\_  
at \_\_\_\_\_ o'clock \_\_\_\_\_ M.

(Register of Deeds)

By \_\_\_\_\_ Deputy