

# U.S. PUBLIC LAND SURVEY MONUMENT RECORD

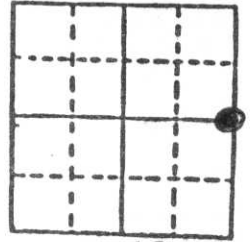
**Note:** This form is intended and designed to fulfill all requirements of Wisconsin Administrative Code, Chapter A-E 5.02, U.S. Public Land Survey Monument Record (3) (a) (b) (c) (d) (e) (f) (g) (h) (i). An additional sheet may be added if necessary to conform with said requirements.

(a) Corner location: Township 32 North

Range 8 East

Town EAST PART SCHLEY

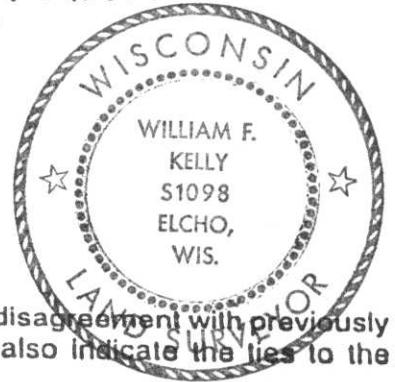
County LINCOLN



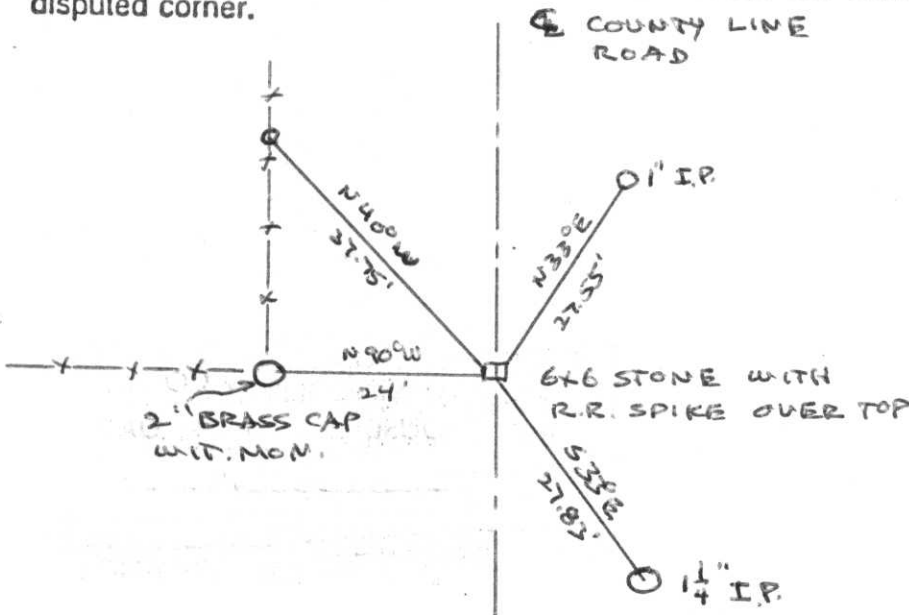
Section 13

b) (f) (g) (h) Description of monument found at this corner and if it was accepted, state all evidence (material, testimonial, occupational, plats, records, other monuments) used as a basis for accepting. If not accepted or if nothing was found, state evidence used as basis for establishing location. If reestablished through lost corner proportionate methods, indicate all monuments, distances and directions used to establish.

ORIGINAL CORNER ESTABLISHED BY J.M. MARSH IN JULY 1851  
 LOCATED 6x6 GRANITE STONE MONUMENT 8" UNDER  
 ROAD SURFACE  
 SET 1/2" R.R. STEEL ON ALL 4 SIDES OF MONUMENT  
 SET R.R. SPIKE OVER TOP OF MONUMENT  
 SET WITNESS MONUMENT



c) (d) (e) Plan view of corner with ties to at least 4 witness monuments. If in disagreement with previously established corner, show the distances between the two corners and also indicate the ties to the disputed corner.



(i) I, WILLIAM F. KELLY

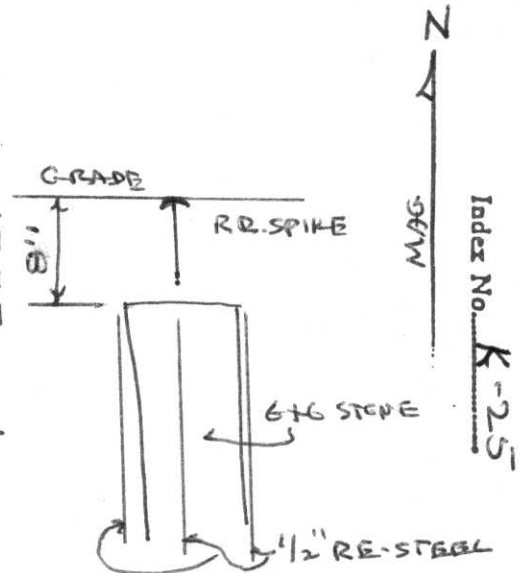
(Type or print name) certify that the corner location on this record was determined by me or under my direction and control and that this U.S. Public Land Survey Monument Record is correct and complete to the best of my knowledge and belief.

William F. Kelly

11-14-90

Signature

Date



Index No. K-25