

CERTIFIED LAND CORNER RESTORATION

Index No. I-1

State of Wisconsin }
County of LANGLADE } ss.

I WILLIAM F. KELLY, do hereby certify that on the 3RD day of DEC., 1981, I found evidence of the SW corner of SEC. 7 Township 32, North, Range 9 EAST, Fourth Principal Meridian, as described hereon; and that from this evidence I established a new monument and accessories as described hereon to perpetuate the original location of this corner.

Resident witnesses:

EMIL FOLTA
.....
.....
.....

History of original corner establishment:
ORIGINAL CORNER ESTABLISHED BY
HIRAM C. FELLOWS IN SEPT., 1860.

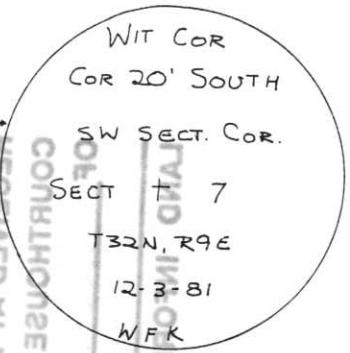
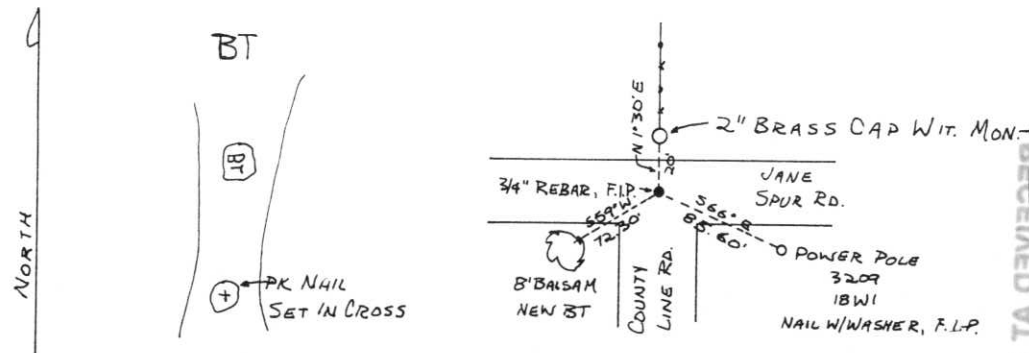
CRANITE MON. SET IN 1930's
REPLACED WITH STEEL BAR
PER RESIDENT WITNESS

SE Sec 12-32-8

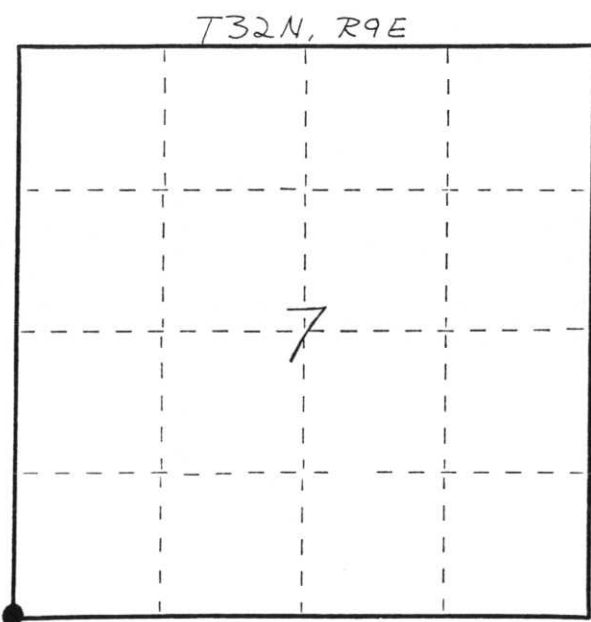
Description of corner evidence found:
3/4" REBAR, FOUND IN PLACE.
SET A 2" x 42" BLACK IRON
PIPE WITH BRASS CAP
MONUMENT. WIT. COR.



Description of monument and accessories I established to perpetuate the original location of this corner.



FORM 985 H. C. MILLER CO., MILWAUKEE



○ = Corner monument restored.

Dated at ELCHO, Wis., this 3RD day of DEC., 1981

Signature William F. Kelly Title COUNTY SURVEYOR Registration No. 1098
(County Surveyor, Registered Land Surveyor, or other duly authorized official)

Office of Register of Deeds, County of....., I hereby certify that the within instrument was filed in this office for record on the..... day of....., 19..... at..... o'clock..... M.

.....
(Register of Deeds)
By..... Deputy

RECEIVED AT REC'D IN ORIGINAL FILE
DAY
MIS
MAY
1981
LAND SURVEYOR OFFICE