

# U.S. PUBLIC LAND SURVEY MONUMENT RECORD

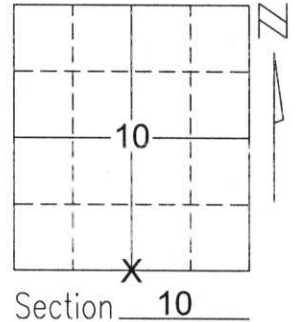
Note: This form is intended and designed to fulfill all requirements of Wisconsin Administrative Code, Chapter A-E 5.02, U.S. Public Land Survey Monument Record (3)(a)(b)(c)(d)(e)(f)(g)(h)(i). An additional sheet may be added if necessary to conform with said requirements.

(a) Corner location: Township 32 North

Range 8 East

Town/City/Village SCHLEY

County LINCOLN



Section 10

(b)(f)(g)(h) Description of monument found at this corner and if it was accepted, state all evidence (material, testimonial, occupational, plats, records, other monuments) used as a basis for accepting. If not accepted or if nothing was found, state evidence used as basis for establishing location. If reestablished through lost corner proportionate methods, indicate all monuments, distances and directions used to establish.

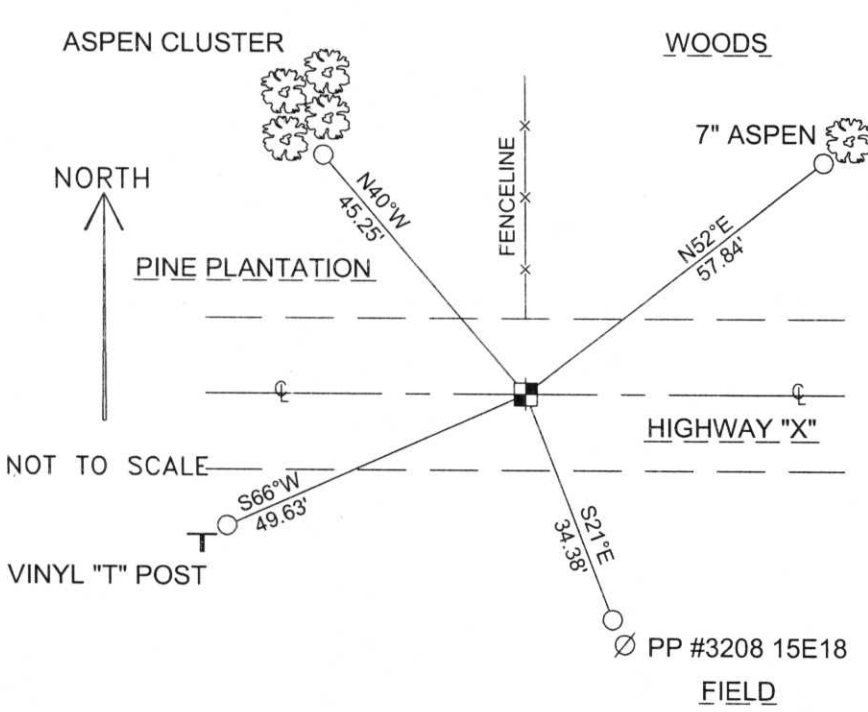
SEARCHED FOR CORNER WITH COUNTY GRADALL. DUG AT THE INTERSECTION OF THE FENCELINE EXTENDED SOUTH AND THE CENTERLINE OF HIGHWAY "X". DUG WELL BELOW EXISTING GRADE AND FOUND NO EVIDENCE OF STONE. SET BERNSTEN AT THE INTERSECTION OF THE FENCELINE EXTENDED SOUTH AND THE CENTERLINE OF HIGHWAY "X" AS BEST AVAILABLE EVIDENCE. TIED OUT BERNSTEN TO PERPETUATE CORNER LOCATION.

RECEIVED BY LINCOLN COUNTY SURVEYOR THIS 16<sup>TH</sup> DAY

OF September 20 04

Tony Dahl  
County Surveyor

(c)(d)(e) Plan view of corner with ties to at least 4 witness monuments. If undisputed or previously established corner, show the distances between the two corners and also indicate the ties to the disputed corner.



COORDINATES ARE REFERENCED TO THE LINCOLN COUNTY COORDINATE SYSTEM AS DEVELOPED BY THE WISCONSIN DEPARTMENT OF TRANSPORTATION AND WERE DETERMINED BY GPS OBSERVATIONS ON CONTROL POINTS AS SUPPLIED BY LINCOLN COUNTY.

BEARINGS ARE REFERENCED TO MAGNETIC NORTH.

N - 153212.021  
E - 447186.838

- - SET 3/4" x 30" REBAR W/ ALUM CAP
- - SOUTH 1/4 CORNER SET BERNSTEN

(i) I, David A. Renaud, RLS S-2142 certify that the corner location on this record was determined by me or under my direction and control and that this U.S. Public Land Survey Monument Record is correct and complete to the best of my knowledge and belief.

David Renaud 9-15-04  
Signature Date



Index No. 103287