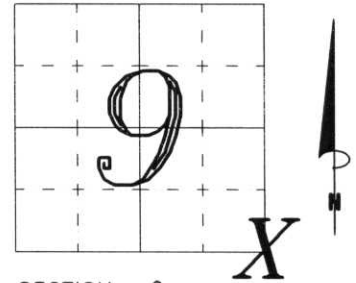


# U.S. PUBLIC LAND SURVEY MONUMENT RECORD

NOTE: THIS FORM IS INTENDED AND DESIGNED TO FULFILL ALL REQUIREMENTS OF WISCONSIN ADMINISTRATIVE CODE, CHAPTER A-E 7.08 U.S. PUBLIC LAND SURVEY MONUMENT RECORD (3) (a) (b) (c) (d) (e) (f) (g) (h) (i). AN ADDITIONAL SHEET MAY BE ADDED IF NECESSARY TO CONFORM WITH SAID REQUIREMENTS.

(a) CORNER LOCATION: TOWNSHIP 32 N NORTH  
 RANGE 8 E EAST/WEST  
~~TOWN/CITY/VILLAGE~~ SCHLEY  
 COUNTY LINCOLN



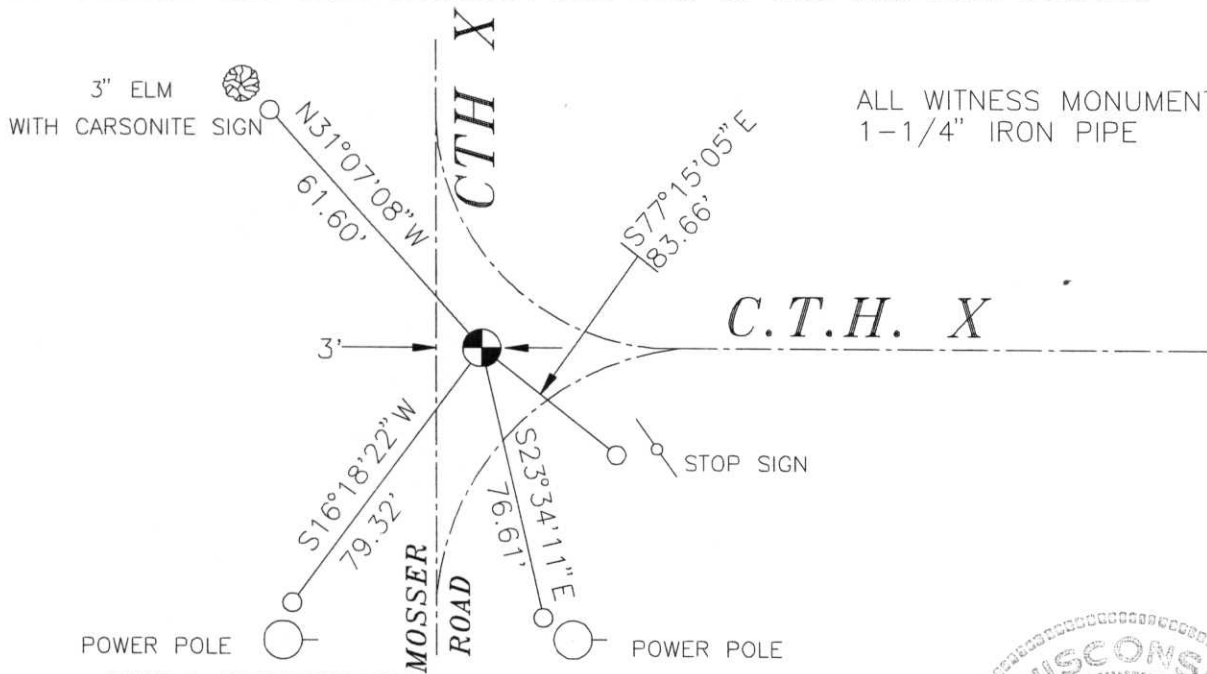
SECTION 9

(b) (f) (g) (h) DESCRIPTION OF MONUMENT FOUND AT THIS CORNER AND IF IT WAS ACCEPTED, STATE ALL EVIDENCE (MATERIAL, TESTIMONIAL, OCCUPATIONAL, PLATS, RECORDS, OTHER MONUMENTS) USED AS BASIS FOR ACCEPTING. IF NOT ACCEPTED OR IF NOTHING WAS FOUND, STATE EVIDENCE USED AS BASIS FOR ESTABLISHING LOCATION. IF REESTABLISHED THROUGH LOST CORNER PROPORTIONATE METHODS, INDICATE ALL MONUMENTS, DISTANCES AND DIRECTIONS USED TO ESTABLISH. INDICATE TYPE OF MONUMENT FOUND OR SET AND SIGN POST.

PICKED UP MAGNETIC READING, DUG BY HAND, FOUND RAIL ROAD SPIKE IN GRAVEL. TOOK TEMPORARY TIES. DUG WITH COUNTY BACKHOE. MADE 6' X 12' HOLE. FOUND 20" 6" x 6" GRANITE STONE WITH FAINT CROSS ON TOP, ABOUT 40" FROM SURFACE. SET BERNTSEN MONUMENT, STAMPED FOR LOCATION, 16" BELOW SURFACE. LAYED STONE ON WEST SIDE, TIED OUT. RAIL ROAD SPIKE WAS NOT OVER STONE. I FOUND NO EVIDENCE OF ANY SURVEY TIED TO THIS CORNER. DISREGARDED RAIL ROAD SPIKE.

RECEIVED AT LINCOLN COUNTY  
 COURTHOUSE THIS 29th DAY  
 OF Oct 19 96  
Pat Priebe  
 TAX DESCRIPTION OFFICE

(c) (d) (e) PLAN VIEW OF CORNER WITH TIES TO AT LEAST 4 WITNESS MONUMENTS. IF IN DISAGREEMENT WITH PREVIOUSLY ESTABLISHED CORNER, SHOW THE DISTANCES BETWEEN THE TWO CORNERS AND ALSO INDICATE THE TIES TO THE DISPUTED CORNER.



(i) I, DAVID L. OSTERBRINK RLS  
 (TYPE OR PRINT NAME) CERTIFY THAT THE CORNER LOCATION ON THIS RECORD WAS DETERMINED BY ME OR UNDER MY DIRECTION AND CONTROL AND THAT THIS U.S. PUBLIC LAND SURVEY MONUMENT RECORD IS CORRECT AND COMPLETE TO THE BEST OF MY KNOWLEDGE AND BELIEF.

David L. Osterbrink 10-7-96  
 SIGNATURE DATE



INDEX NO. I-13