

# LINCOLN COUNTY U.S. PUBLIC LAND SURVEY MONUMENT LOCATION RECORD

SECTION 9  
TOWNSHIP 32 N  
RANGE 8 E

111

LANDMARK       BENCHMARK \_\_\_\_\_

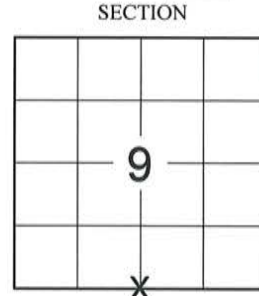
FOUND   
SET   
RESET   
RE-TIED

CORNER IDENTITY: S1/4 CORNER SEC. 9 - 6" x 6" STONE MONUMENT

SCHLEY  
CITY, VILLAGE, TOWN

NO.

LINCOLN COUNTY COORDINATE: N: \_\_\_\_\_  
E: \_\_\_\_\_



ELEVATION-(FEET): \_\_\_\_\_ DATUM: \_\_\_\_\_

WEATHER: CLEAR AND SUNNY

DATE OF SURVEY: 3/20/2014 TEMPERATURE: 25 °F

SURVEY PARTY: CHRIS FIERI & KEITH WALKOWSKI

## BASIS FOR MONUMENT LOCATION:

(DESCRIBE METHOD OF SURVEY AND CORNER AUTHENTICATION)

October 24th, 1980 - Sheridan Schwark found a 6"x 6" granite monument up 1.5 feet. Reset the monument .4' above grade. Tied out the corner to bearing trees.

March 20th, 2014 - We recovered the 6" x 6" stone monument marking the section corner. All ties from the previous tiesheet were either overgrown or missing. We set four witness irons to tie out the corner and perpetuate the corner monument as shown below.

LOCATION  
(Indicated By X)



CERTIFIED CORRECT:

*Christopher L. Fieri*

CHRISTOPHER L. FIERI, S-2954

Registered Land Surveyor

DATE: 3/26/2014

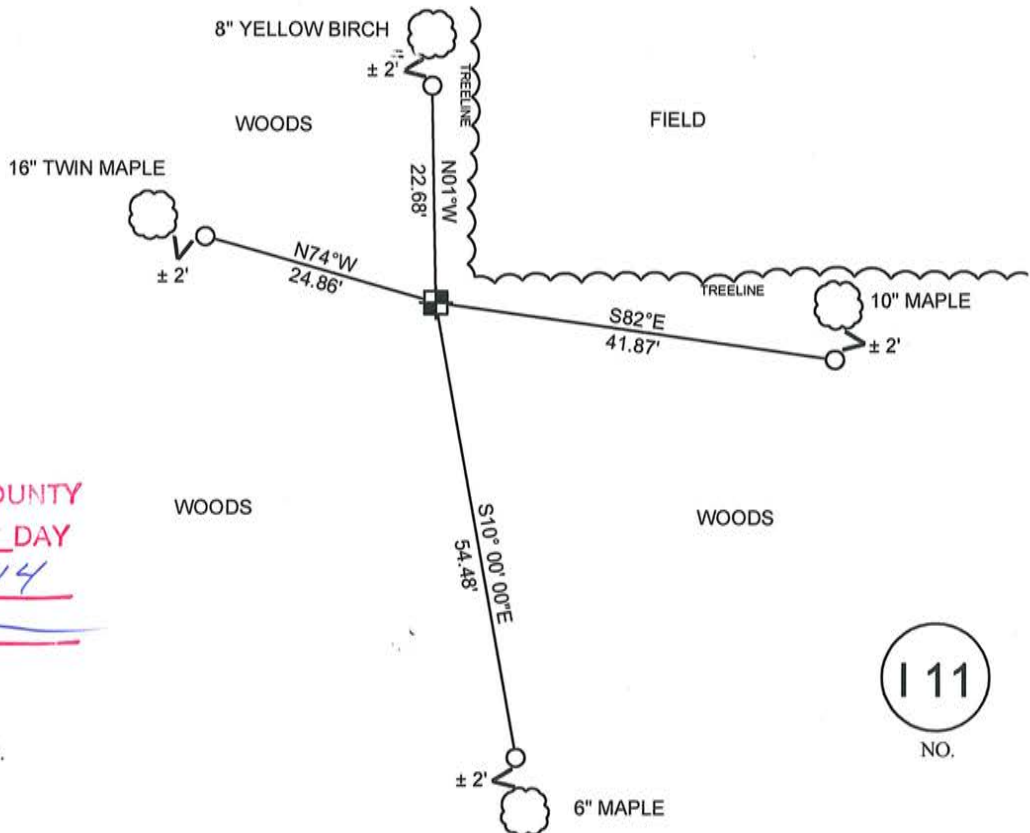
FIELD BOOK NO. 37 PAGE NO. 60

COMPANY RIVERSIDE LAND SURVEYING LLC

## TIE SKETCH:

- FOUND STONE MONUMENT
- 1-1/4" O.D. x 24" IRON PIPE SET

- THIS DRAWING IS NOT TO SCALE



RECEIVED BY LINCOLN COUNTY  
SURVEYOR THIS 15<sup>TH</sup> DAY  
OF April 20 14  
*Tom Doherty*  
COUNTY SURVEYOR

BEARINGS WERE ESTABLISHED FROM A  
MAGNETIC HAND HELD COMPASS READING.

111

NO.

CERTIFIED LAND CORNER RESTORATION

Index No. I-11

State of Wisconsin }  
 County of Lincoln } ss.

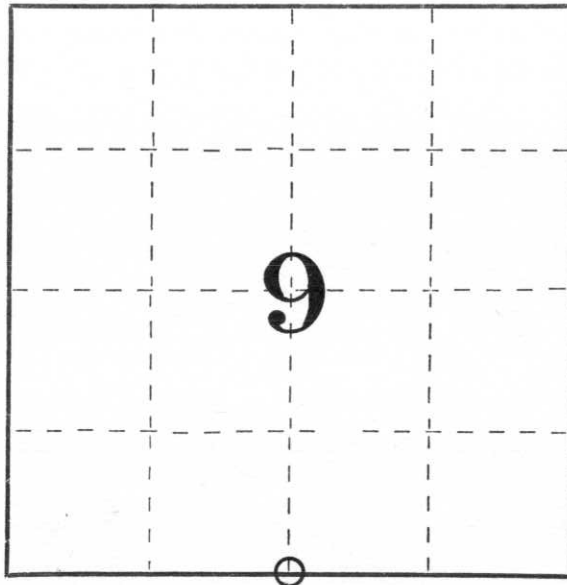
I Sheridan D. Schwark, do hereby certify that on the 16th day of October, 19 80, I found evidence of the South one-quarter corner of Section 9 Township 32, North, Range 8 East, Fourth, Principal Meridian, as described hereon; and that from this evidence I established a new monument and accessories as described hereon to perpetuate the original location of this corner.

Resident witnesses:

.....

.....

.....



○ = Corner monument restored.

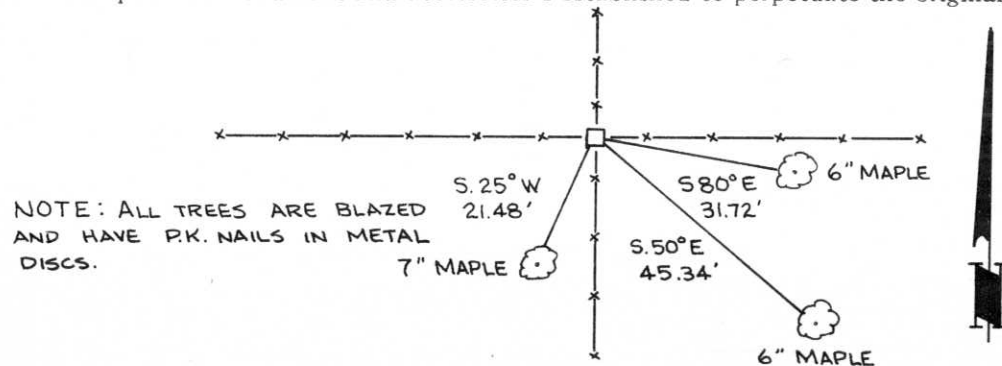
History of original corner establishment:

Wood post set by original government surveyor.

Description of corner evidence found:

We found a 6" x 6" granite monument up 1.5', we reset it leaving it up .4'.

Description of monument and accessories I established to perpetuate the original location of this corner.



NOTE: ALL TREES ARE BLAZED AND HAVE P.K. NAILS IN METAL DISCS.

Dated at Merrill, Wis., this 24th day of October, 19 80

Signature Sheridan D. Schwark Title Registered Land Surveyor Registration No. S-1205  
 (County Surveyor, Registered Land Surveyor, or other duly authorized official)

Office of Register of Deeds, County of \_\_\_\_\_, I hereby certify that the within instrument was filed in this office for record on the \_\_\_\_\_ day of \_\_\_\_\_, 19 \_\_\_\_\_ at \_\_\_\_\_ o'clock \_\_\_\_\_ M.

.....  
 (Register of Deeds)

By \_\_\_\_\_ Deputy