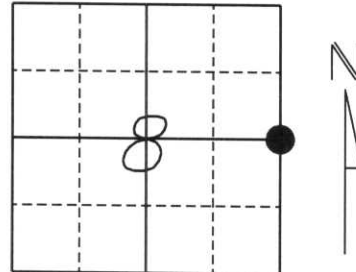


# U.S. PUBLIC LAND SURVEY MONUMENT RECORD

Note: This form is intended and designed to fulfill all requirements of Wisconsin Administrative Code, Chapter A-E 5.02, U.S. Public Land Survey Monument Record (3) (a) (b) (c) (d) (e) (f) (g) (h) (i). An additional sheet may be added if necessary to conform with said requirements.

(a) Corner location: Township 32 North  
 Range 8 East  
 Town/City/Village SCHLEY  
 County Lincoln



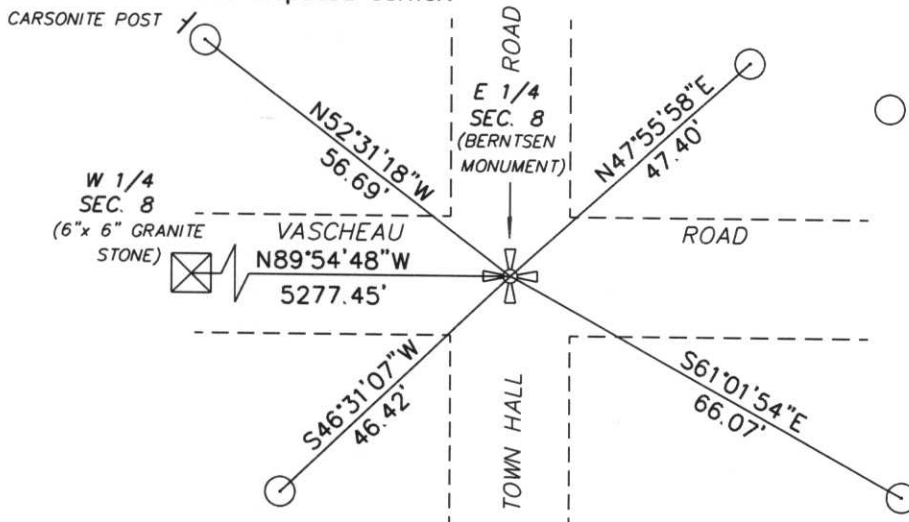
Section 8

(b) (f) (g) (h) Description of monument found at this corner and if it was accepted, state all evidence (material, testimonial, occupational, plats, records, other monuments) used as a basis for accepting. If not accepted or if nothing was found, state evidence used as a basis for establishing location. If reestablished through lost corner proportionate methods, indicate all monuments, distances and directions used to establish.

*Original Gov't. Survey: wood post set by Ellis in 1852.  
 Excavated blacktop and found Berntsen Monument Cap set by Schwark in Oct. 1980. Tied to 7/8" rebars with Lincoln County Cap.*

RECEIVED AT LINCOLN COUNTY  
 COURTHOUSE THIS 26th DAY  
 OF July 2000  
*Tom Hallman*  
 LAND INFORMATION OFFICE

(c) (d) (e) Plan view of corner with ties to at least 4 witness monuments. If in disagreement with previously established corner, show the distances between the two corners and also indicate the ties to the disputed corner.



○ 7/8" REBAR WITH LINCOLN COUNTY CAP



(i) I, William W. Nutter RLS, S-2299  
 (type or print name) certify that the corner location on this record was determined by me or under my direction and control and that this U.S. Public Land Survey Monument Record is correct and complete to the best of my knowledge and belief.

*William W. Nutter*  
 \_\_\_\_\_  
 Signature

6-28-00

Date

Index No. G-9

CERTIFIED LAND CORNER RESTORATION

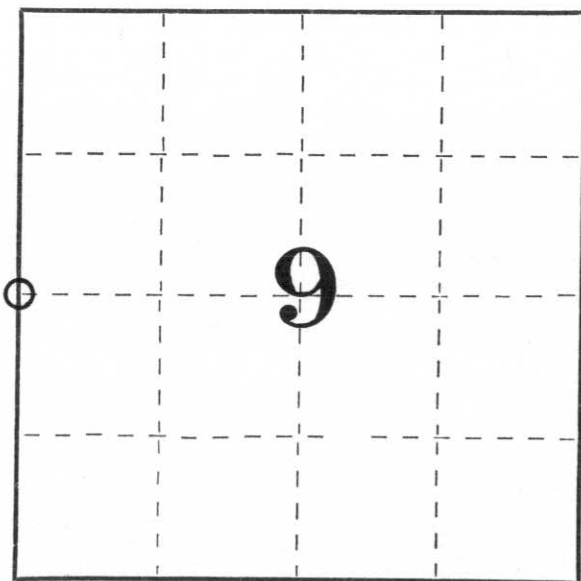
Index No. G-9

State of Wisconsin }  
County of Lincoln } ss.

I Sheridan D. Schwark, do hereby certify that on the 9<sup>th</sup> day of October, 19 80, I found evidence of the West one-quarter corner of Section 9 Township 32, North, Range 8 East, Fourth, Principal Meridian, as described hereon; and that from this evidence I established a new monument and accessories as described hereon to perpetuate the original location of this corner.

Resident witnesses:

.....  
.....  
.....



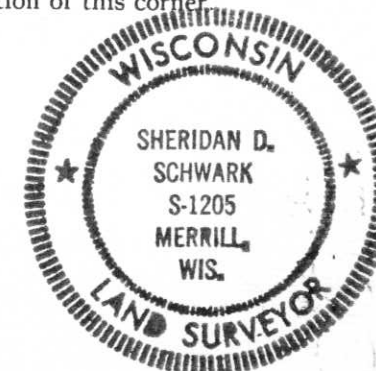
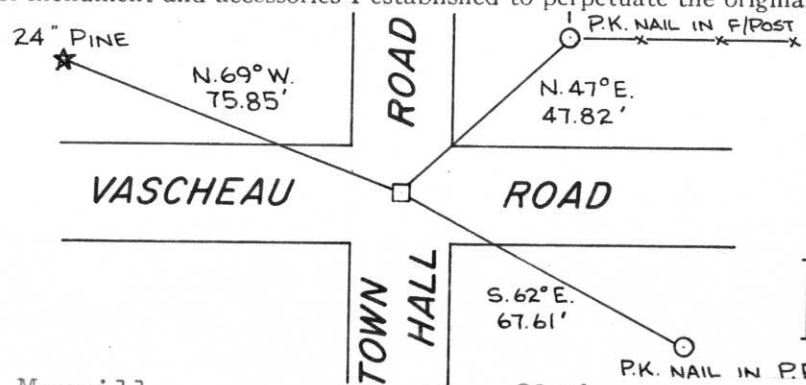
○ = Corner monument restored.

History of original corner establishment:  
Wood post set by original government surveyor

Description of corner evidence found:

We excavated the blacktop road with a backhoe (Arnold Wyland Jr. operator) and found a 6" x 7" red granite monument 15" below the surface. We removed the Stone and set a Lincoln County Berntsen Monument cap on two 6" extensions. We were unable to set a monument due to rock.

Description of monument and accessories I established to perpetuate the original location of this corner.



Dated at Merrill, Wis., this 23rd day of October, 19 80.

Signature Sheridan D. Schwark Title Registered Land Surveyor Registration No. S-1205  
(County Surveyor, Registered Land Surveyor, or other duly authorized official)

Office of Register of Deeds, County of....., I hereby certify that the within instrument was filed in this office for record on the..... day of....., 19..... at..... o'clock..... M..

.....  
(Register of Deeds)

By..... Deputy