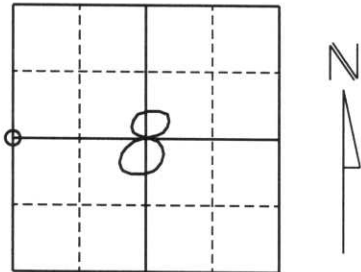


U.S. PUBLIC LAND SURVEY MONUMENT RECORD

Note: This form is intended and designed to fulfill all requirements of Wisconsin Administrative Code, Chapter A-E 5.02, U.S. Public Land Survey Monument Record (3) (a) (b) (c) (d) (e) (f) (g) (h) (l). An additional sheet may be added if necessary to conform with said requirements.

(a) Corner location: Township 32 North
 Range 8 East
 Town/City/Village SCHLEY
 County Lincoln



Section 8

(b) (f) (g) (h) Description of monument found at this corner and if it was accepted, state all evidence (material, testimonial, occupational, plats, records, other monuments) used as a basis for accepting. If not accepted or if nothing was found, state evidence used as a basis for establishing location. If reestablished through lost corner proportionate methods, indicate all monuments, distances and directions used to establish.

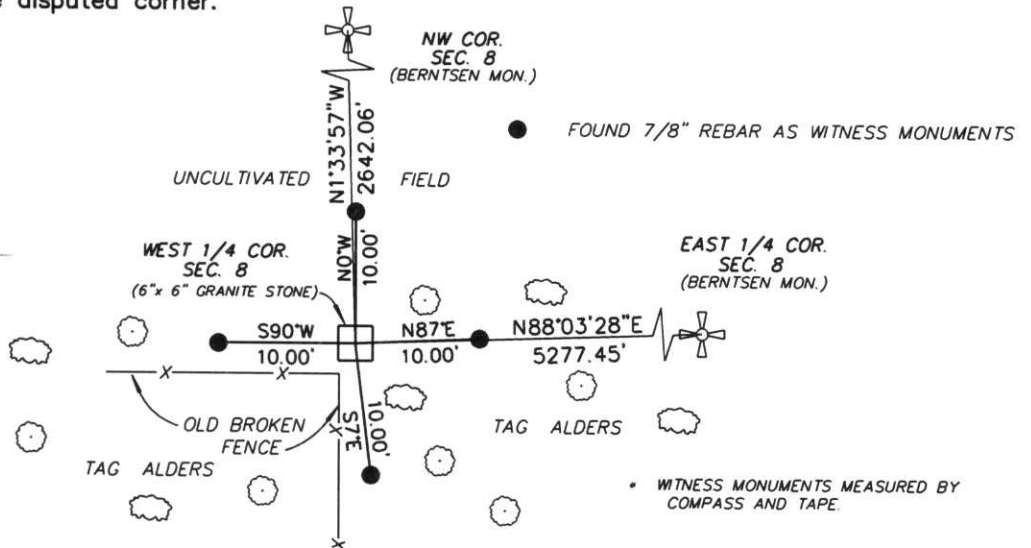
ORIGINAL CORNER WAS SET BY A.G. & F.S. ELLIS IN MARCH AND APRIL OF 1852. SET WOOD POST WITH BEARING TREES:
 12" PINE S69°W 229 LKS.
 16" ELM N7°E 152 LKS.

REVISITED IN AUGUST 1979 BY S. SCHWARK WHO FOUND 6"x 6" GRANITE STONE ON IT'S SIDE. HE RESET STONE AND SET FOUR 7/8" REBARS 10' FROM STONE IN CARDINAL DIRECTIONS.

WE ALSO FOUND THE 6"x 6"x 36" GRANITE STONE LYING ON IT'S SIDE AND FOUND THE FOUR 7/8" REBARS, TWO OF WHICH WERE ALSO LYING ON THEIR SIDES. RESET STONE AT A POINT 10.00' FROM THE NORTH AND WEST REBARS, AND RESET THE SOUTH AND EAST REBARS 10.00' FROM STONE.

RECEIVED AT LINCOLN COUNTY COURTHOUSE THIS 26th DAY OF July 20 00
Shirley Ralston
 LAND INFORMATION OFFICE

(c) (d) (e) Plan view of corner with ties to at least 4 witness monuments. If in disagreement with previously established corner, show the distances between the two corners and also indicate the ties to the disputed corner.



(l) I, William W. Nutter RLS, S-2299
 (type or print name) certify that the corner location on this record was determined by me or under my direction and control and that this U.S. Public Land Survey Monument Record is correct and complete to the best of my knowledge and belief.

William W. Nutter RLS - S-2299 7-25-00
 Signature Date

CERTIFIED LAND CORNER RESTORATION

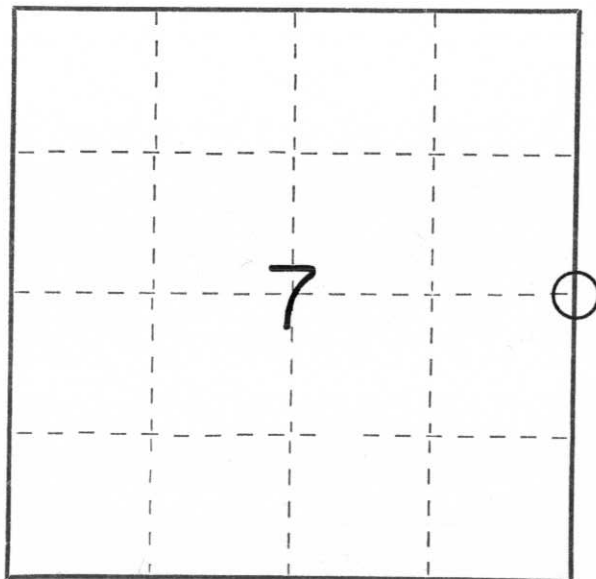
Index No. G-5

State of Wisconsin }
County of Lincoln } ss.

I Sheridan D. Schwark, do hereby certify that on the 15th day of August, 19 79, I found evidence of the east one-quarter corner of Section 7 Township 32, North, Range 8 East, Fourth, Principal Meridian, as described hereon; and that from this evidence I established a new monument and accessories as described hereon to perpetuate the original location of this corner.

Resident witnesses:

.....
.....
.....



○ = Corner monument restored.

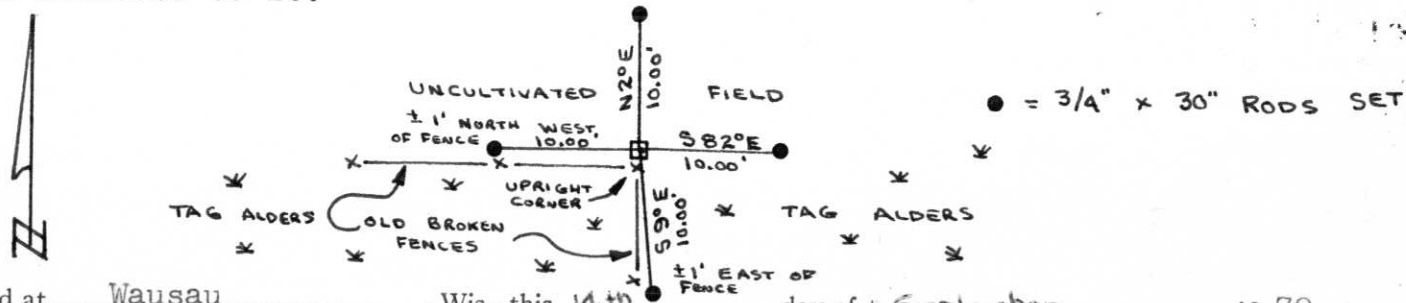
History of original corner establishment:

Date: March & April 1852
Surveyor: A.G. & F.S. Ellis
Monument: Wood Post
Witnesses: 12" Pine S69W 229 links
16" Elm N7E 152 links

Description of corner evidence found:

We found a 6"x6"x34" red granite monument lying on its side about 4' West of an old fence corner. The stone had an X scribed in the top. Local long time resident and landowner Otto Bergman said the stone has been there on its side for many years.

Description of monument and accessories I established to perpetuate the original location of this corner. We reset the stone at the fence corner and left it 6" above grade. We set a .5' metal U post about 1' NE of the stone. The post has a survey marker warning sign attached to it.



Dated at Wausau, Wis., this 14th day of September, 19 79.

Signature Sheridan D. Schwark Title Reg. Land Surveyor Registration No. S-1205
(County Surveyor, Registered Land Surveyor, or other duly authorized official)

Office of Register of Deeds, County of _____, I hereby certify that the within instrument was filed in this office for record on the _____ day of _____, 19 _____ at _____ o'clock _____ M.

.....
(Register of Deeds)

By _____ Deputy