

U.S. PUBLIC LAND SURVEY MONUMENT RECORD

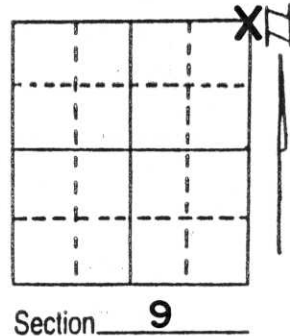
Note: This form is intended and designed to fulfill all requirements of Wisconsin Administrative Code, Chapter A-E 5.02, U.S. Public Land Survey Monument Record (3) (a) (b) (c) (d) (e) (f) (g) (h) (i). An additional sheet may be added if necessary to conform with said requirements.

(a) Corner location: Township 32 North

Range 8 East

Town/~~City/Village~~ SCHLEY

County LINCOLN



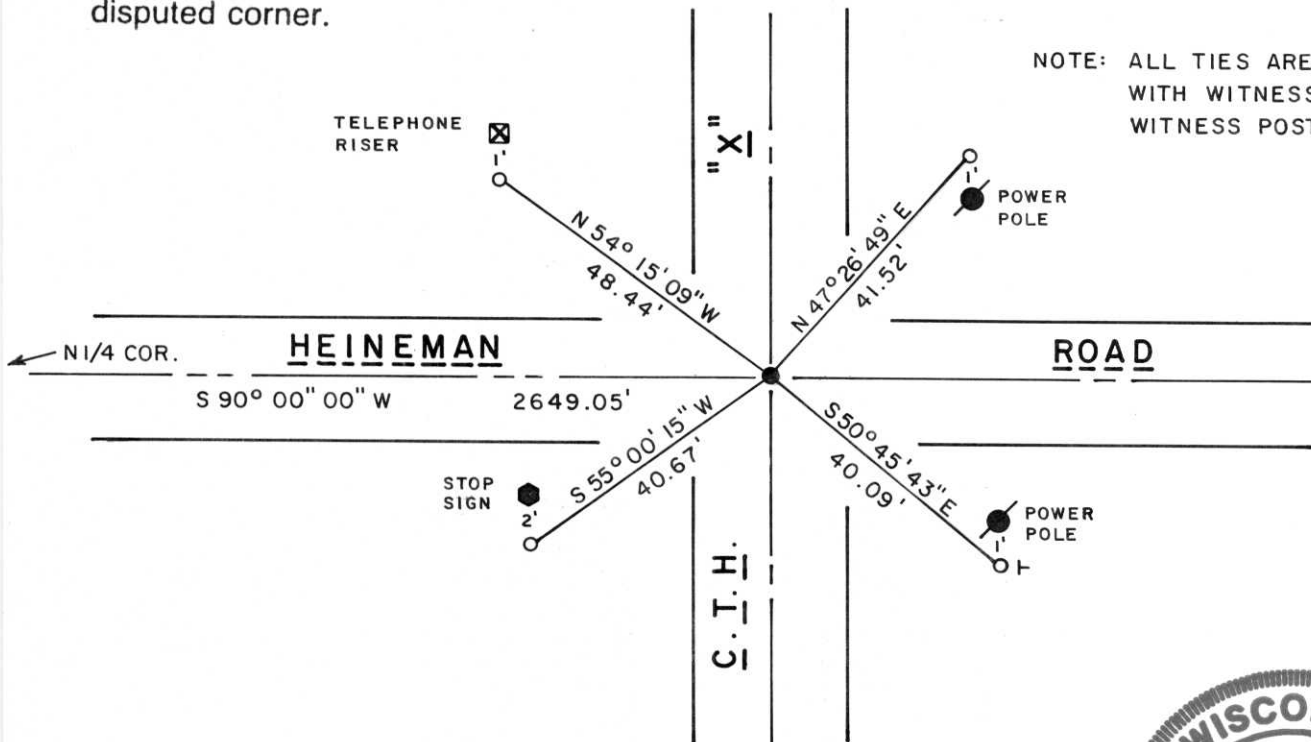
(b) (f) (g) (h) Description of monument found at this corner and if it was accepted, state all evidence (material, testimonial, occupational, plats, records, other monuments) used as a basis for accepting. If not accepted or if nothing was found, state evidence used as basis for establishing location. If reestablished through lost corner proportionate methods, indicate all monuments, distances and directions used to establish.

Original Corner: Wood Post set during Original Government Survey.

Recovered upright and intact a Lincoln County Berntsen Monument about 2½ feet East of Centerline of C.T.H. "X" about 4 inches below bituminous surface. This corner had been dug for with backhoe by Sheridan D. Schwark, R.L.S. No. S-1205 on or about August 17, 1982. Monument found was set by Mr. Schwark at that time. Accepted monument found as best evidence true corner location and set out four 7/8" x 30" rebar with caps pursuant to present Lincoln County U.S. Public Land Survey remonumentation standards.

RECEIVED AT LINCOLN COUNTY
COURTHOUSE THIS 30th DAY
OF June 1995
Pat Priebe
TAX DESCRIPTION OFFICE

(c) (d) (e) Plan view of corner with ties to at least 4 witness monuments. If in disagreement with previously established corner, show the distances between the two corners and also indicate the ties to the disputed corner.



(i) I, LaVerne H. Mosher
(type or print name) certify that the corner location on this record was determined by me or under my direction and control and that this U.S. Public Land Survey Monument Record is correct and complete to the best of my knowledge and belief.

LaVerne H. Mosher June 30, 1995
Signature Date



Index No. E-13