

U.S. PUBLIC LAND SURVEY MONUMENT RECORD

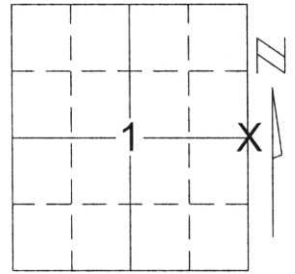
Note: This form is intended and designed to fulfill all requirements of Wisconsin Administrative Code, Chapter A-E 5.02, U.S. Public Land Survey Monument Record (3)(a)(b)(c)(d)(e)(f)(g)(h)(i). An additional sheet may be added if necessary to conform with said requirements.

(a) Corner location: Township 32 North

Range 8 East

Town/City/Village SCHLEY

County LINCOLN



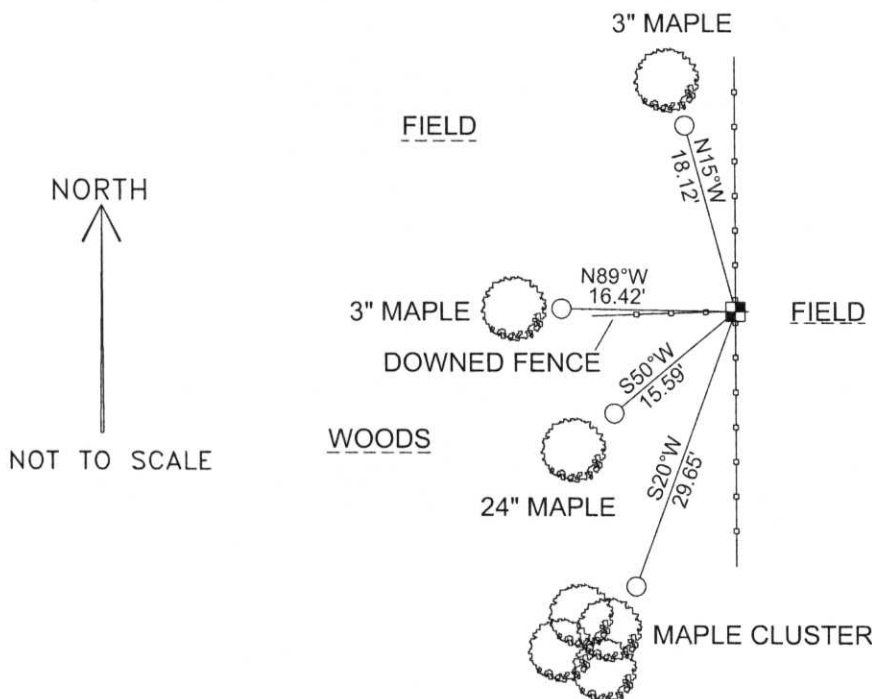
Section 1

(b)(f)(g)(h) Description of monument found at this corner and if it was accepted, state all evidence (material, testimonial, occupational, plats, records, other monuments) used as a basis for accepting. If not accepted or if nothing was found, state evidence used as basis for establishing location. If reestablished through lost corner proportionate methods, indicate all monuments, distances and directions used to establish.

FOUND 2" PIPE WITH BRASS CAP WHICH WAS SET BY WILLIAM F. KELLEY ON 11-19-81. HIS TIES WERE OVERGROWN IN TREES. SET FOUR NEW TIES TO PERPETUATE CORNER LOCATION.

RECEIVED BY LINCOLN COUNTY
SURVEYOR THIS 20TH DAY
OF August 20 04
Tony Wall
COUNTY SURVEYOR

(c)(d)(e) Plan view of corner with ties to at least 4 witness monuments. If in disagreement with previously established corner, show the distances between the two corners and also indicate the ties to the disputed corner.



COORDINATES ARE REFERENCED TO THE LINCOLN COUNTY COORDINATE SYSTEM AS DEVELOPED BY THE WISCONSIN DEPARTMENT OF TRANSPORTATION AND WERE DETERMINED BY GPS OBSERVATIONS ON CONTROL POINTS AS SUPPLIED BY LINCOLN COUNTY.

BEARINGS ARE REFERENCED TO MAGNETIC NORTH.

N - 161120.990
E - 460428.771

○ - SET 3/4" x 30" REBAR W/ ALUM CAP AT BASE OF BEARING TREE

■ - EAST 1/4 CORNER FOUND 2" PIPE WITH BRASS CAP

(i) I, David A. Renaud, RLS S-2142, certify that the corner location on this record was determined by me or under my direction and control and that this U.S. Public Land Survey Monument Record is correct and complete to the best of my knowledge and belief.

David Renaud 6-29-04
Signature Date



Index No. ...13285

C-25

CERTIFIED LAND CORNER RESTORATION

Index No. C-25

State of Wisconsin }
 County of LANGLADE } ss.

I WILLIAM F. KELLY, do hereby certify that on the 19th day of Nov., 19 81, I found evidence of the W 1/4 corner of SECTION 6 Township 32, North, Range 9 EAST, Fourth Principal Meridian, as described hereon; and that from this evidence I established a new monument and accessories as described hereon to perpetuate the original location of this corner.

Resident witnesses:

H. KAISER

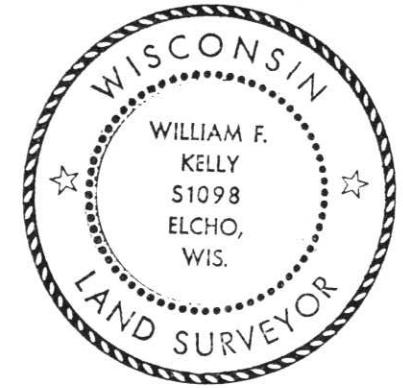
History of original corner establishment:
 ORIGINAL CORNER ESTABLISHED BY
 JAMES M. MARSH IN AUG., 1851

ORIGINAL POST REPLACED WITH GRANITE MONUMENTS ABOUT 1930 BY LINCOLN COUNTY SURVEYOR.

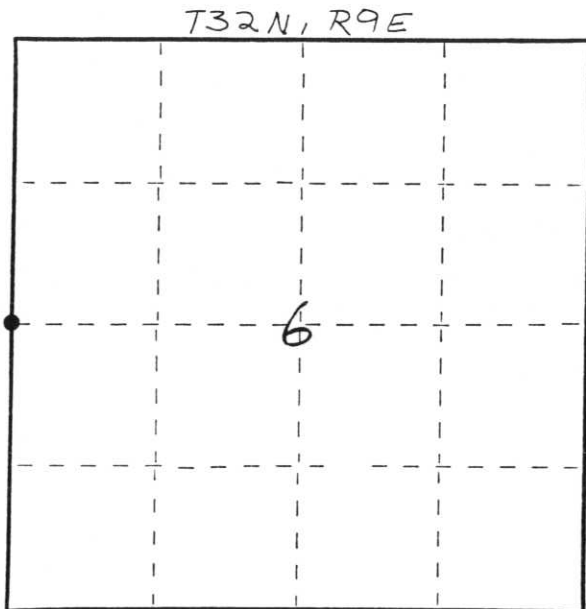
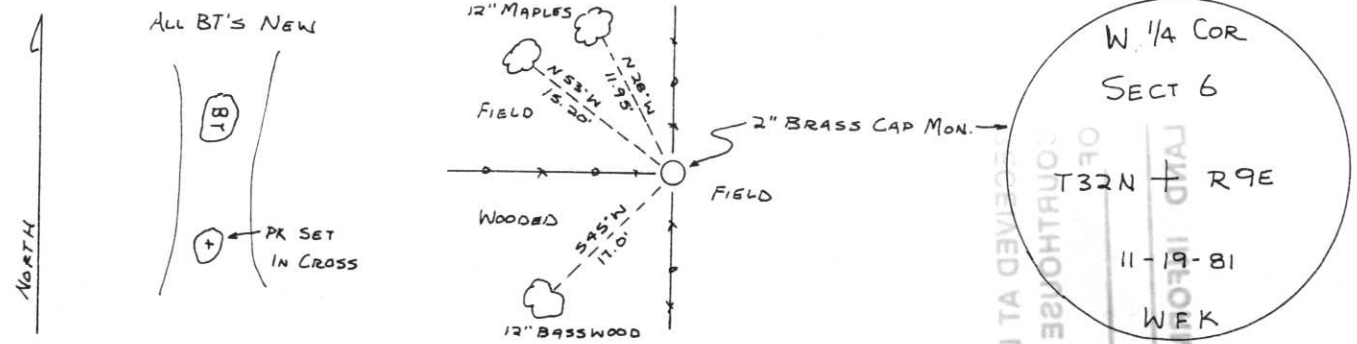
Sec 1-32-8 E 1/4 cr.

Description of corner evidence found:

GRANITE MONUMENT LOCATED TILTED OUT OF POSITION. SET NEW 2"x 42" BLACK IRON PIPE WITH BRASS CAP MON. AS CORNER. GRANITE MON. AND STONES PLACED AROUND PIPE.



Description of monument and accessories I established to perpetuate the original location of this corner.



○ = Corner monument restored.

Dated at ELCHO, Wis., this 19th day of Nov., 19 81

Signature William F. Kelly Title COUNTY SURVEYOR Registration No. 1098
 (County Surveyor, Registered Land Surveyor, or other duly authorized official)

Office of Register of Deeds, County of _____, I hereby certify that the within instrument was filed in this office for record on the _____ day of _____, 19 _____ at _____ o'clock _____ M.

(Register of Deeds)

By _____ Deputy

FORM 985 M. C. MILLER CO., MILWAUKEE

RECEIVED AT LINCOLN COUNTY REGISTER OF DEEDS OFFICE NOV 11 1981 W.F.K.

13285

