

U.S. PUBLIC LAND SURVEY MONUMENT RECORD

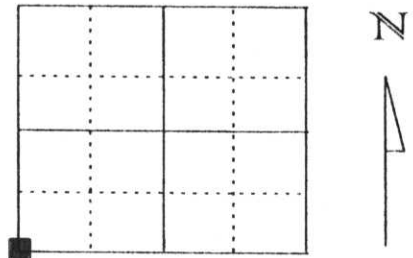
Note: This form is intended and designed to fulfill all requirements of Wisconsin Administrative Code, Chapter A-E 5.02, U.S. Public Land Survey Monument Record (3) (a) (b) (c) (d) (e) (f) (g) (h) (l). An additional sheet may be added if necessary to conform with said requirements.

(a) Corner location: Township 32 North

Range 7 East

Town/City/Village SCHLEY

County Lincoln



Southwest corner, Section 36

(b) (f) (g) (h) Description of monument found at this corner and if it was accepted, state all evidence (material, testimonial, occupational, plats, records, other monuments) used as a basis for accepting. If not accepted or if nothing was found, state evidence used as basis for establishing location. If reestablished through lost corner proportionate methods, indicate all monuments, distances and directions used to establish.

Notes of the original government survey indicate wood posts were set at all section and quarter-section corners. Stone monuments were subsequently placed at these corners during remonumentation surveys.

We dug at centerline of road and existing fenceline to the west and found part of stone monument which had been broken off of base. Dug deeper and found base of 6"x6" stone monument in place. Set Lincoln County Berntsen Monument in place of stone base with top of monument 1 foot below surface of road. Set $\frac{1}{2}$ of stone next to monument on south side.

RECEIVED AT LINCOLN COUNTY
COURTHOUSE THIS 1st DAY
OF Feb 2000
Pat Strube
LAND INFORMATION OFFICE

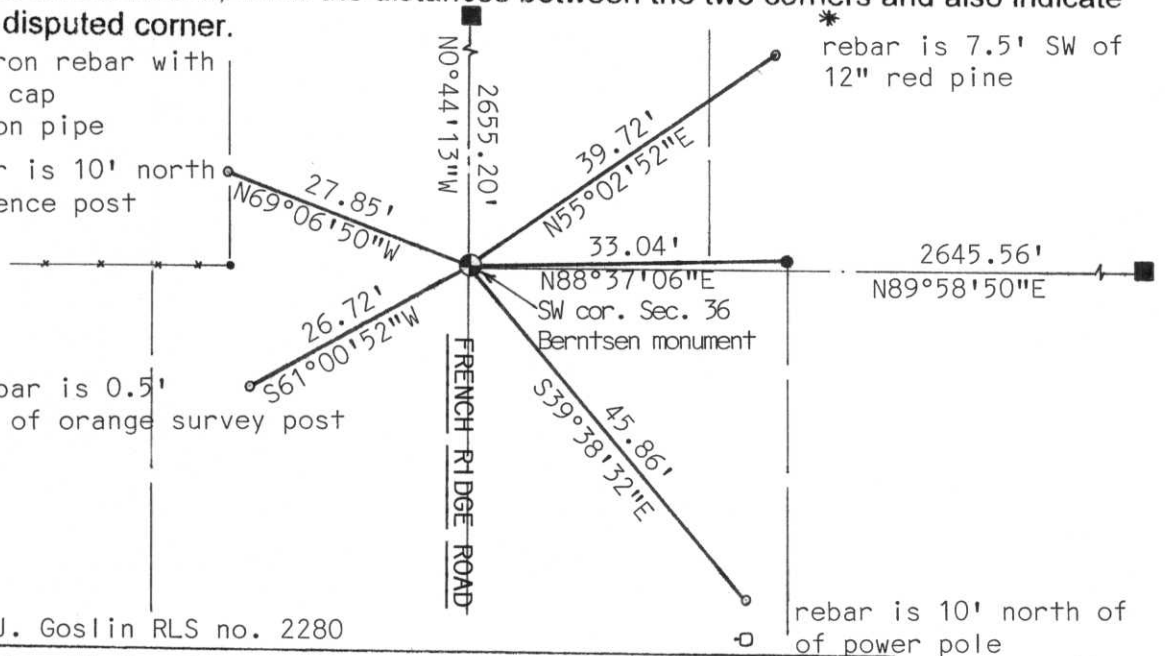
(c) (d) (e) Plan view of corner with ties to at least 4 witness monuments. If in disagreement with previously established corner, show the distances between the two corners and also indicate the ties to the disputed corner.

- o Set 7/8"x30" iron rebar with Lincoln County cap
- o Existing 1" iron pipe

rebar is 10' north of fence post

rebar is 0.5' NE of orange survey post

* rebar is 7.5' SW of 12" red pine



(l) I, David J. Goslin RLS no. 2280

(type or print name) certify that the corner location on this record was determined by me or under my direction and control and that this U.S. Public Land Survey Monument Record is correct and complete to the best of my knowledge and belief.

David J. Goslin
Signature



1-28-00
Date

Index No. 9-21