

LINCOLN COUNTY U.S. PUBLIC LAND SURVEY MONUMENT LOCATION RECORD

SECTION 34
TOWNSHIP 32
RANGE 7

Y-13
NO.

LANDMARK BENCHMARK _____

FOUND
SET
RESET
RE-TIED

CORNER IDENTITY: 8"x8" STONE

MERRILL
CITY, VILLAGE, TOWN

LINCOLN COUNTY COORDINATE: N: _____

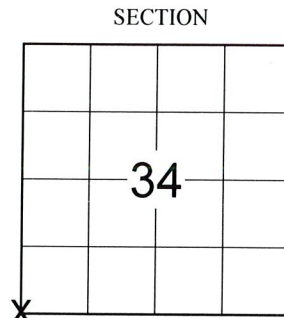
E: _____

ELEVATION-(FEET): _____ DATUM: _____

WEATHER: CLOUDY/RAINING

DATE OF SURVEY: 10/24/23 TEMPERATURE: 55 °F

SURVEY PARTY: SAM HAUGEN & JED MATTMILLER



SECTION

LOCATION
(Indicated By X)



BASIS FOR MONUMENT LOCATION:

(DESCRIBE METHOD OF SURVEY AND CORNER AUTHENTICATION)

SAM HAUGEN AND JED MATTMILLER SEARCHED FOR THE SOUTHWEST CORNER OF SECTION 34 AND FOUND 8"x8" STONE WITH SECTION NUMBER INSCRIPTIONS ON TOP TIPPED OVER. RECOVERED BOTH RECORD REBAR TIES, NORTH REBAR TIE HAD TO BE STOOD UP. ADJUSTED STONE PER RECORD TIES AND SET 5' LIGHT DUTY METAL FENCE POSTS ON EACH SIDE OF STONE TO ASSIST IN STABILIZING STONE LOCATION WHICH MATCHES RECORD DISTANCE TO WEST 1/4 CORNER WITHIN 0.07'. SET 2 NEW TIES TO SOUTHEAST AND SOUTHWEST AND PERPETUATED THE CORNER AS SHOWN.



CERTIFIED CORRECT:

Nathan J. Wincentsen

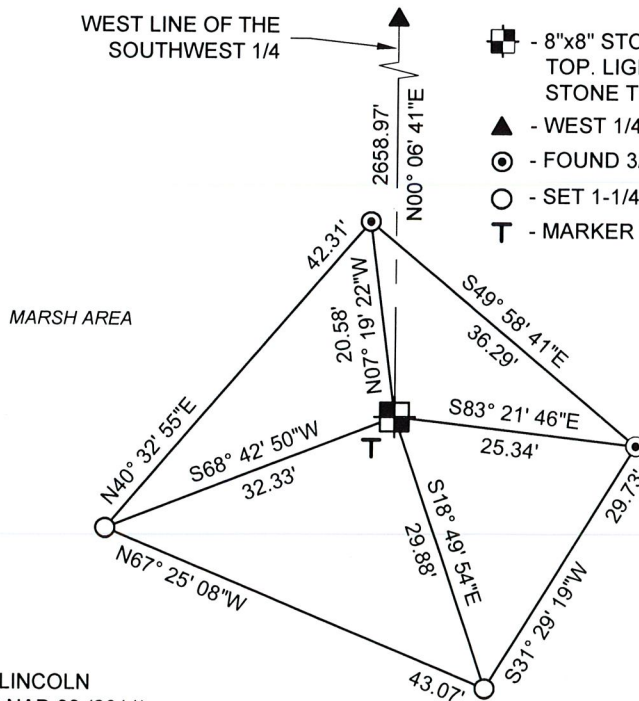
NATHAN J. WINCENTSEN S-2539
Professional Land Surveyor

DATE: 11-7-23

FIELD BOOK NO. NA PAGE NO. NA

COMPANY RIVERSIDE LAND SURVEYING LLC

TIE SKETCH:



- 8"x8" STONE WITH SECTION NUMBERS INSCRIBED ON TOP. LIGHT DUTY FENCE POST SET ON EACH SIDE OF STONE TO HELP STABILIZE LOCATION
- ▲ - WEST 1/4 CORNER, SECTION 34 - FOUND MAG NAIL
- - FOUND 3/4" REBAR
- - SET 1-1/4" O.D. x 24" IRON PIPE
- T - MARKER POST

RECEIVED BY LINCOLN COUNTY
SURVEYOR THIS 16th DAY
OF November 20 23
Tony Dall
COUNTY SURVEYOR

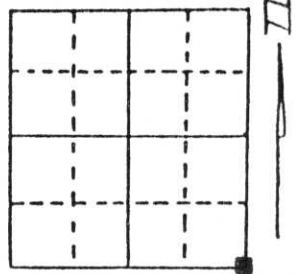
BEARINGS ARE BASED ON THE LINCOLN COUNTY COORDINATE SYSTEM NAD 83 (2011) AND REFERENCED AS SHOWN

Y-13
NO.

U.S. PUBLIC LAND SURVEY MONUMENT RECORD

Note: This form is intended and designed to fulfill all requirements of Wisconsin Administrative Code, Chapter A-E 5.02, U.S. Public Land Survey Monument Record (3) (a) (b) (c) (d) (e) (f) (g) (h) (i). An additional sheet may be added if necessary to conform with said requirements.

(a) Corner location: Township 32 North
Range _____ East
Town/City/Village MERRILL
County LINCOLN



Section 33

(b) (f) (g) (h) Description of monument found at this corner and if it was accepted, state all evidence (material, testimonial, occupational, plats, records, other monuments) used as a basis for accepting. If not accepted or if nothing was found, state evidence used as basis for establishing location. If reestablished through lost corner proportionate methods, indicate all monuments, distances and directions used to establish.

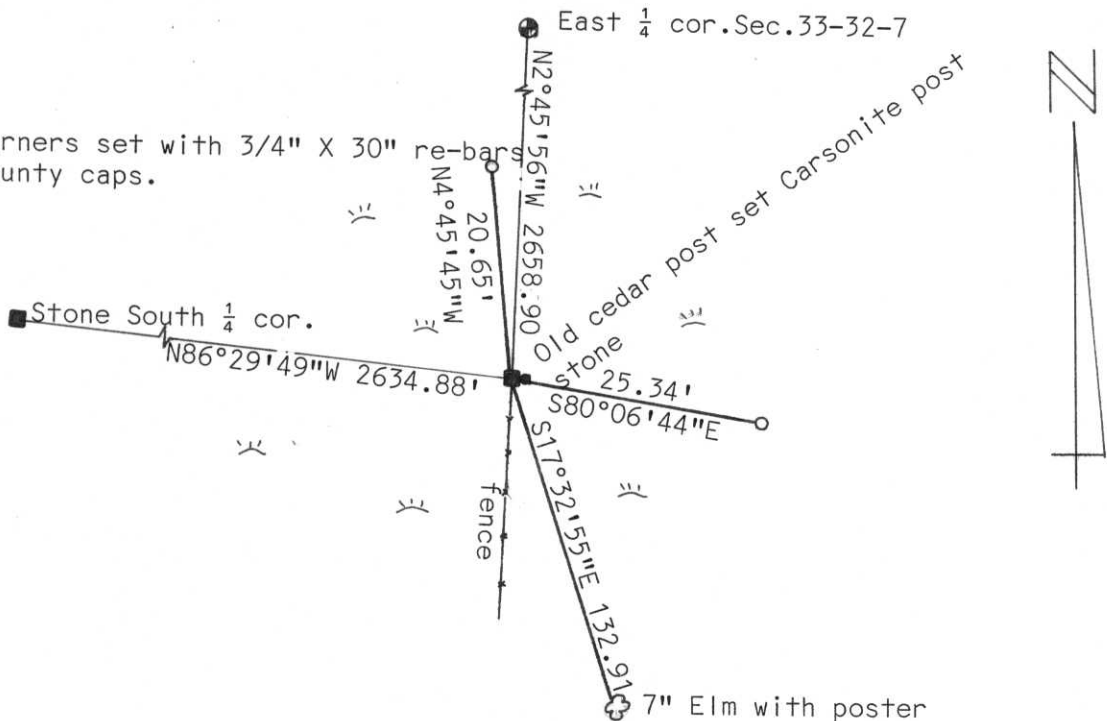
Calculated corner location from adjacent corners traversed to approximate location. Found 8" X 8" Granite stone tipped with corner location cut into top of stone.

Straightened monument and tied out. Corner was 400'± into alder swamp on old down fence line.

RECEIVED AT LINCOLN COUNTY
COURTHOUSE THIS 23rd DAY
OF Sept. 19 95
Pat Pruebe
TAX DESCRIPTION OFFICE

(c) (d) (e) Plan view of corner with ties to at least 4 witness monuments. If in disagreement with previously established corner, show the distances between the two corners and also indicate the ties to the disputed corner.

All witness corners set with 3/4" X 30" re-bars with Lincoln County caps.



(i) I, Edwin R. Abendroth RLS No. S-798
(type or print name) certify that the corner location on this record was determined by me or under my direction and control and that this U.S. Public Land Survey Monument Record is correct and complete to the best of my knowledge and belief.

Edwin R. Abendroth 9-20-95
Signature Date



Index No. 9-13

