

# U.S. PUBLIC LAND SURVEY MONUMENT RECORD

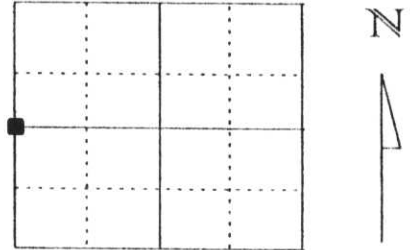
Note: This form is intended and designed to fulfill all requirements of Wisconsin Administrative Code, Chapter A-E 5.02, U.S. Public Land Survey Monument Record (3) (a) (b) (c) (d) (e) (f) (g) (h) (i). An additional sheet may be added if necessary to conform with said requirements.

(a) Corner location: Township 32 North

Range 7 East

Town/City/Village SCHLEY

County Lincoln



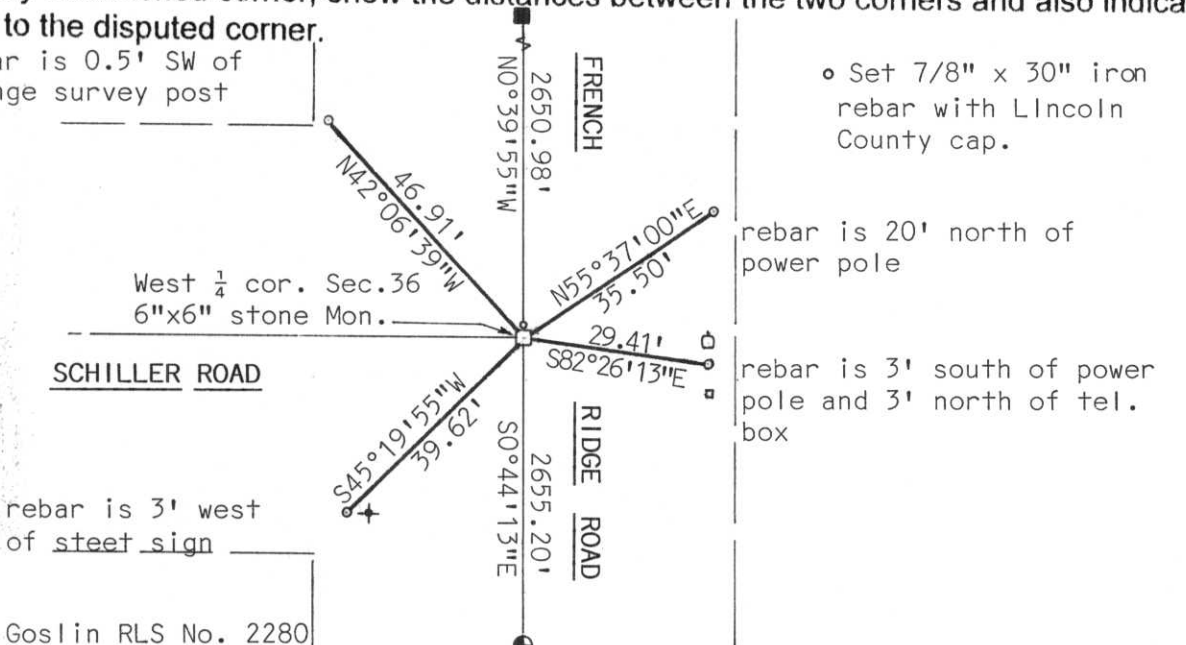
West  $\frac{1}{4}$  corner, Section 36

(b) (f) (g) (h) Description of monument found at this corner and if it was accepted, state all evidence (material, testimonial, occupational, plats, records, other monuments) used as a basis for accepting. If not accepted or if nothing was found, state evidence used as basis for establishing location. If reestablished through lost corner proportionate methods, indicate all monuments, distances and directions used to establish.

Notes of the original government survey indicate wood posts were set at all section and quarter-section corners. Stone monuments were subsequently placed at these corners during remonumentation surveys.  
 We found a 3/4" iron bar at this location but there was no record of how it was set. We dug at centerline intersection with Lincoln County Backhoe and found 6" x 6" stone monument with the top 5" broken off. Stone was still in good condition. Set 3/4" iron bar on north side of stone and also set the top 5" of broken of stone on north side. Top of stone monument is 2' below the surface of road.

(c) (d) (e) Plan view of corner with ties to at least 4 witness monuments. If in disagreement with previously established corner, show the distances between the two corners and also indicate the ties to the disputed corner.

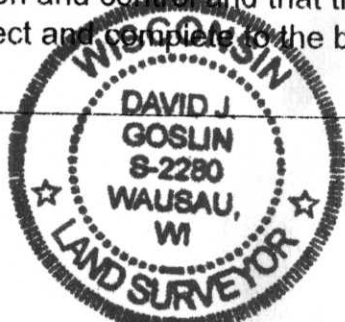
RECEIVED AT LINCOLN COUNTY  
 COURTHOUSE THIS 1st DAY  
 OF Feb. 2000  
*Pat Brubaker*  
 LAND INFORMATION OFFICE



(i) David J. Goslin RLS No. 2280

(type or print name) certify that the corner location on this record was determined by me or under my direction and control and that this U.S. Public Land Survey Monument Record is correct and complete to the best of my knowledge and belief.

*David J. Goslin*  
 Signature



1-28-00  
 Date

Index No. W-21