

U.S. PUBLIC LAND SURVEY MONUMENT RECORD

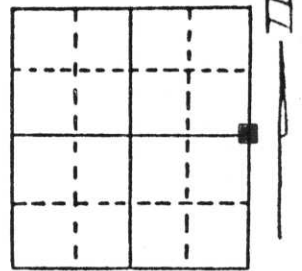
Note: This form is intended and designed to fulfill all requirements of Wisconsin Administrative Code, Chapter A-E 5.02, U.S. Public Land Survey Monument Record (3) (a) (b) (c) (d) (e) (f) (g) (h) (i). An additional sheet may be added if necessary to conform with said requirements.

(a) Corner location: Township 32 North

Range 7 East

Town/City/Village MERRILL

County LINCOLN



Section 34

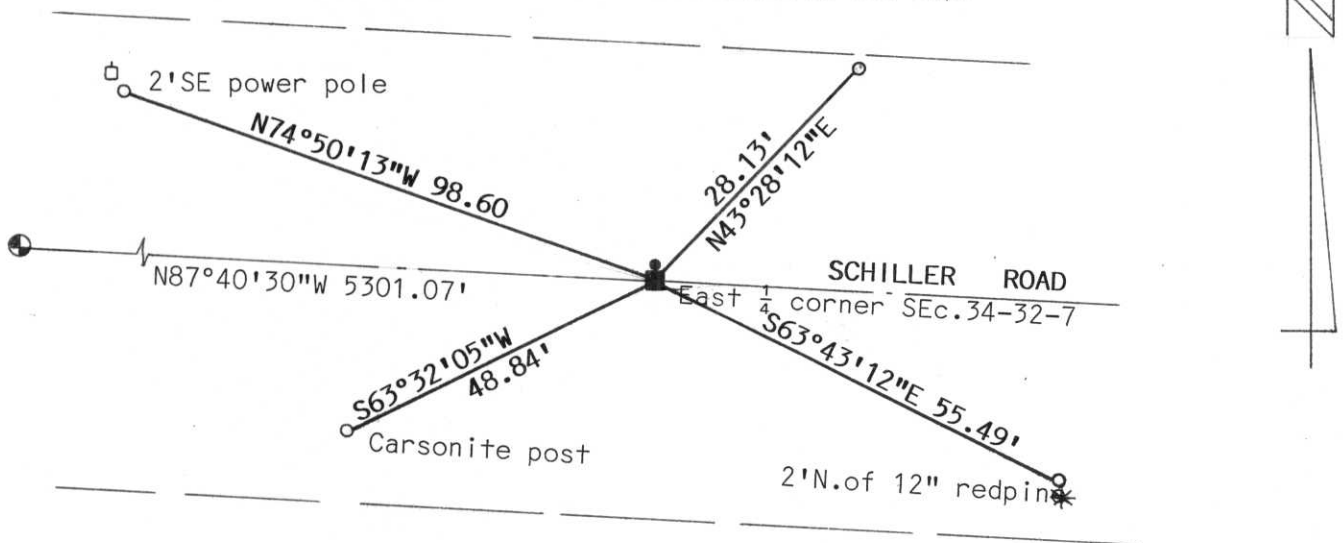
(b) (f) (g) (h) Description of monument found at this corner and if it was accepted, state all evidence (material, testimonial, occupational, plats, records, other monuments) used as a basis for accepting. If not accepted or if nothing was found, state evidence used as basis for establishing location. If reestablished through lost corner proportionate methods, indicate all monuments, distances and directions used to establish.

Found 8" X 8" Granite stone in place but tipped. Straightened monument and placed a 3/4" iron bar on north side of stone. Covered monument and tied out.
Dave of Premier Excavating witness.

**RECEIVED AT LINCOLN COUNTY
COURTHOUSE THIS 22nd DAY
OF Sept. 19 95**
Pat Priske
TAX DESCRIPTION OFFICE

(c) (d) (e) Plan view of corner with ties to at least 4 witness monuments. If in disagreement with previously established corner, show the distances between the two corners and also indicate the ties to the disputed corner.

All witness corners 3/4" re-bar 30" long with Lincoln Co. cap.



(i) I, Edwin R. Abendroth RSL No. S-798
(type or print name) certify that the corner location on this record was determined by me or under my direction and control and that this U.S. Public Land Survey Monument Record is correct and complete to the best of my knowledge and belief.

Edwin R. Abendroth 9-20-95
Signature Date



Index No. W-17





18 2:47 PM



18 2:48 PM