

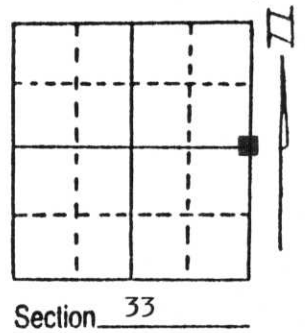
U.S. PUBLIC LAND SURVEY MONUMENT RECORD

Note: This form is intended and designed to fulfill all requirements of Wisconsin Administrative Code, Chapter A-E 5.02, U.S. Public Land Survey Monument Record (3) (a) (b) (c) (d) (e) (f) (g) (h) (i). An additional sheet may be added if necessary to conform with said requirements.

(a) Corner location: Township 32 North
 Range 7 East

Town/City/Village MERRILL

County LINCOLN



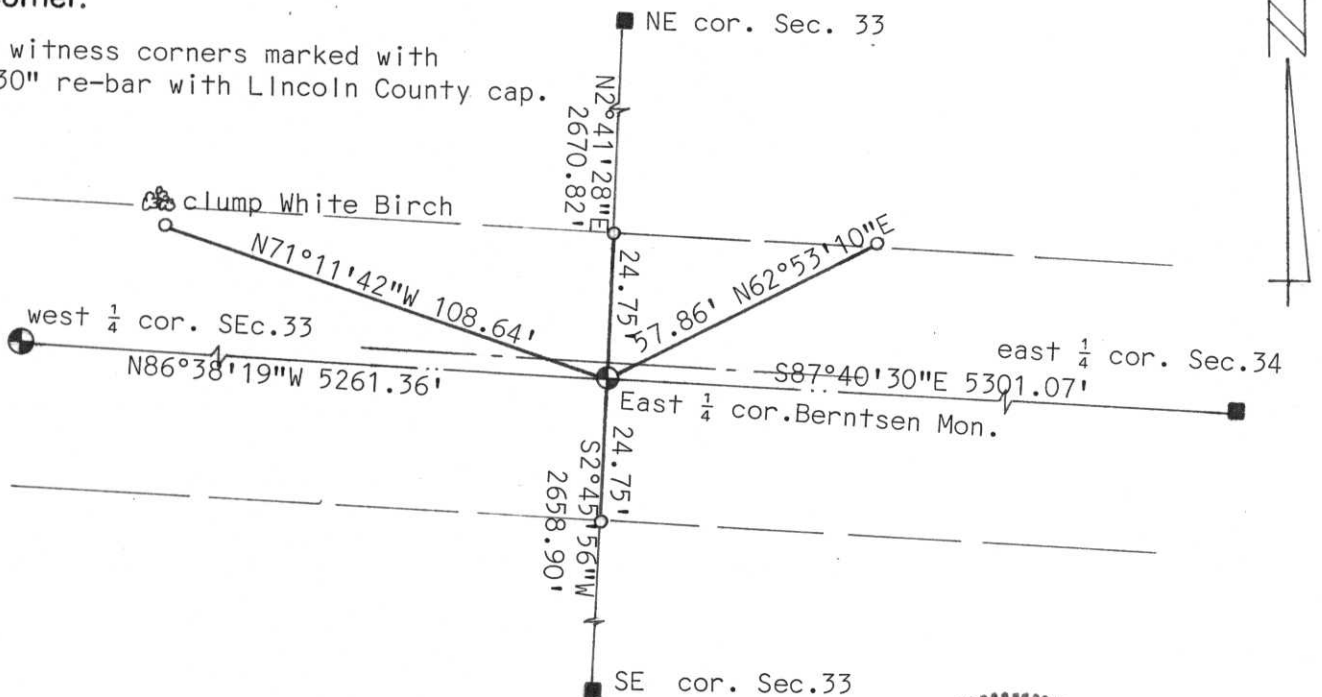
(b) (f) (g) (h) Description of monument found at this corner and if it was accepted, state all evidence (material, testimonial, occupational, plats, records, other monuments) used as a basis for accepting. If not accepted or if nothing was found, state evidence used as basis for establishing location. If reestablished through lost corner proportionate methods, indicate all monuments, distances and directions used to establish.

Dug with backhoe found granite stone 8" X 8" X 24". Located stone position and continued to search for base of stone. Found nothing futher. Set Berntsen monument because stone was very short. Dave of Premier Excavating witness. Tied into traverse and tied out.

**RECEIVED AT LINCOLN COUNTY
 COURTHOUSE THIS 22nd DAY
 OF Sept. 19 95
Pat Priebe
 TAX DESCRIPTION OFFICE**

(c) (d) (e) Plan view of corner with ties to at least 4 witness monuments. If in disagreement with previously established corner, show the distances between the two corners and also indicate the ties to the disputed corner.

All witness corners marked with 3/4" X 30" re-bar with Lincoln County cap.



(i) I, Edwin R. Abendroth RLS No. S-798
 (type or print name) certify that the corner location on this record was determined by me or under my direction and control and that this U.S. Public Land Survey Monument Record is correct and complete to the best of my knowledge and belief.

Edwin R. Abendroth 9-20-95
 Signature Date



Index No. 12-13



18 2:17 PM



СОДИА РЕВЕРЕНД
ГИСОГИ СОПЛА

18 2:19 PM



18 2:20 PM