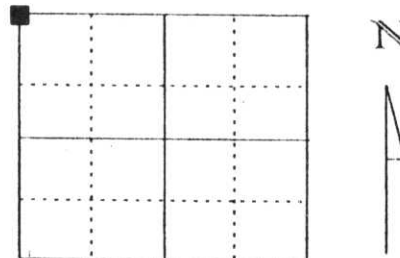


# U.S. PUBLIC LAND SURVEY MONUMENT RECORD

Note: This form is intended and designed to fulfill all requirements of Wisconsin Administrative Code, Chapter A-E 5.02, U.S. Public Land Survey Monument Record (3) (a) (b) (c) (d) (e) (f) (g) (h) (i). An additional sheet may be added if necessary to conform with said requirements.

(a) Corner location: Township 32 North  
 Range 7 East  
 Town/City/Village SCHLEY  
 County Lincoln



Northwest corner, Section 36

(b) (f) (g) (h) Description of monument found at this corner and if it was accepted, state all evidence (material, testimonial, occupational, plats, records, other monuments) used as a basis for accepting. If not accepted or if nothing was found, state evidence used as basis for establishing location. If reestablished through lost corner proportionate methods, indicate all monuments, distances and directions used to establish.

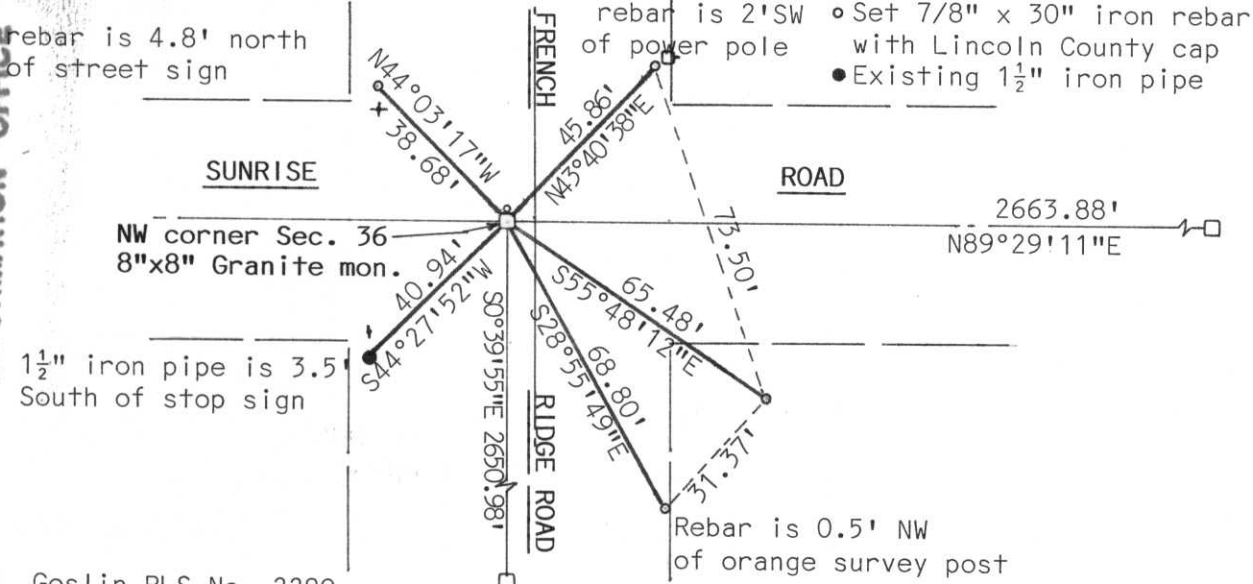
Notes of the original government survey indicate wood posts were set at all section and quarter-section corners. Stone Monuments were subsequently placed at these corners during remonumentation surveys.

In August of 1976 Chester Nowaczyk had dug for this corner and found 8"x8" Granite monument 2' below road surface and 6' west of centerline of French Ridge road. He set ties out as follows:  
 SW tie 40.90' to 1 1/2" I.P.  
 SE tie 71.95' to 1 1/2" I.P.  
 NE tie 42.25' to 1 1/2" I.P.

We found only one remaining tie for corner. We dug for corner again and found 8"x8" stone monument 3.5 feet below the surface of road and 6' west of the centerline of French Ridge Road. Set 3/4" iron pipe on north side of stone.

(c) (d) (e) Plan view of corner with ties to at least 4 witness monuments. If in disagreement with previously established corner, show the distances between the two corners and also indicate the ties to the disputed corner.

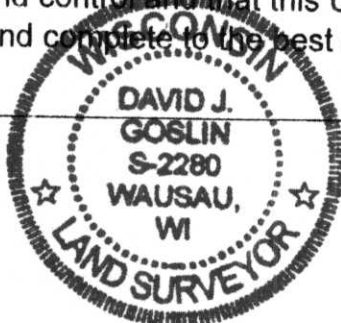
RECEIVED AT LINCOLN COUNTY  
 COURTHOUSE THIS 15th DAY  
 OF Feb. 2000  
 Pat Priebe  
 LAND INFORMATION OFFICE



(i) I, David J. Goslin RLS No. 2280

(type or print name) certify that the corner location on this record was determined by me or under my direction and control and that this U.S. Public Land Survey Monument Record is correct and complete to the best of my knowledge and belief.

David J. Goslin  
 Signature



1-28-00  
 Date

Index No. 0-2-1

CERTIFIED LAND CORNER RESTORATION

State of Wisconsin }  
 County of MARATHON } ss.

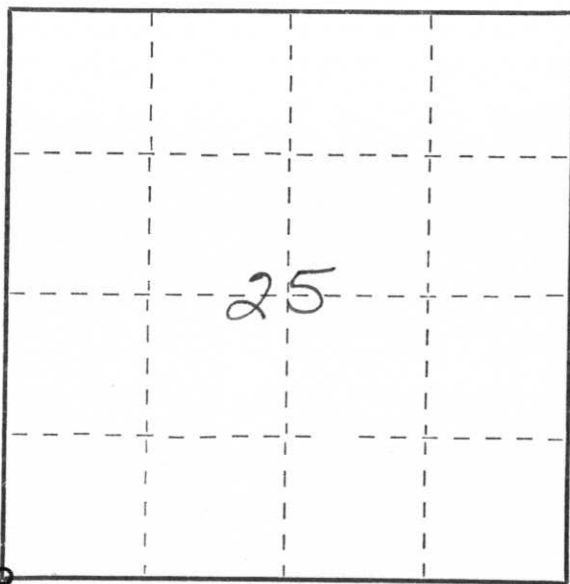
I CHESTER J. NOWACZYK, do hereby certify that on the 3RD day of Aug, 19 76, I found evidence of the SW COR corner of Section 25 Township 32, North, Range 7 EAST, Fourth, Principal Meridian, as described hereon; and that from this evidence I established a new monument and accessories as described hereon to perpetuate the original location of this corner.

Resident witnesses:

.....

.....

.....



○ = Corner monument restored.

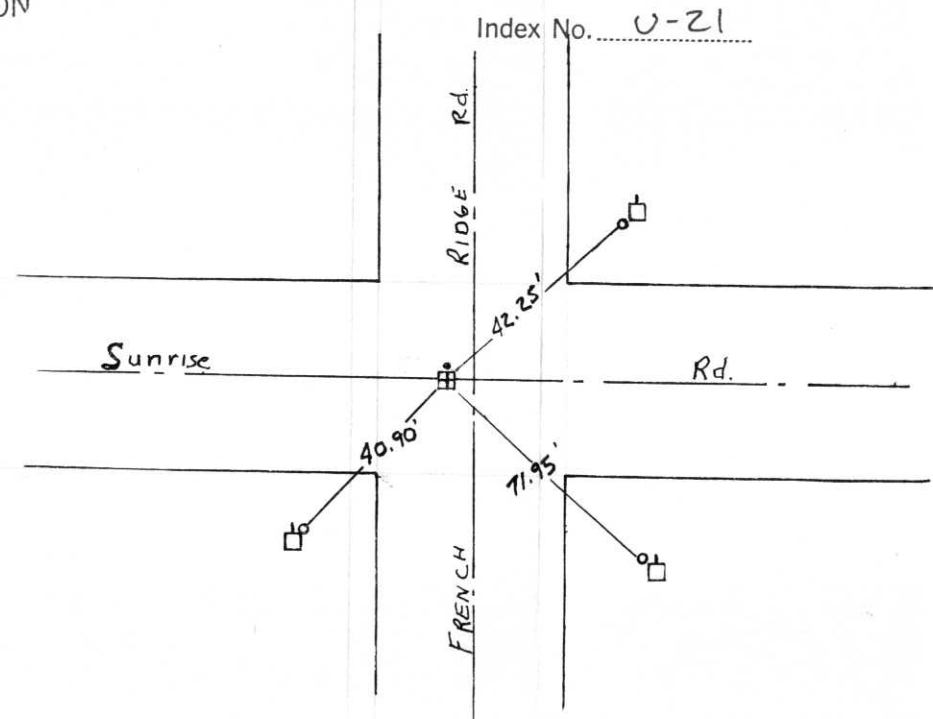
History of original corner establishment:

Description of corner evidence found:

DUG IN ROAD w/backhoe found 8"X8" GRANITE Monument app. 2' below ROAD SURFACE app. 6' W of & FRENCH RIDGE

Description of monument and accessories I established to perpetuate the original location of this corner.

Set 3-1/2" iron pipes next to power poles tied in to irons & set plaques on RP's also placed small piece of 2" iron over corner for magnetic location



Dated at WAUSAU, Wis., this 9th day of Aug, 19 76.

Signature Chester J. Nowaczyk Title SURVEYOR Registration No. 1143  
(County Surveyor, Registered Land Surveyor, or other duly authorized official)

Office of Register of Deeds, County of \_\_\_\_\_, I hereby certify that the within instrument was filed in this office for record on the \_\_\_\_\_ day of \_\_\_\_\_, 19 \_\_\_\_\_ at \_\_\_\_\_ o'clock \_\_\_\_\_ M.

.....  
 (Register of Deeds)

By \_\_\_\_\_ Deputy