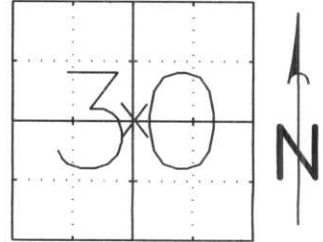


# U.S. PUBLIC LAND SURVEY MONUMENT RECORD

NOTE: THIS FORM IS INTENDED AND DESIGNED TO FULFILL ALL REQUIREMENTS OF WISCONSIN ADMINISTRATIVE CODE, CHAPTER A-E 7.08, U.S. PUBLIC LAND SURVEY MONUMENT RECORD (3) (A) (B) (C) (D) (E) (F) (G) (H) (I). AN ADDITIONAL SHEET MAY BE ADDED IF NECESSARY TO CONFORM WITH SAID REQUIREMENTS.

## LINCOLN COUNTY

(A) SECTION 30  
 TOWNSHIP 32 NORTH  
 RANGE 7 EAST  
 TOWN, CITY, VILLAGE: MERRILL

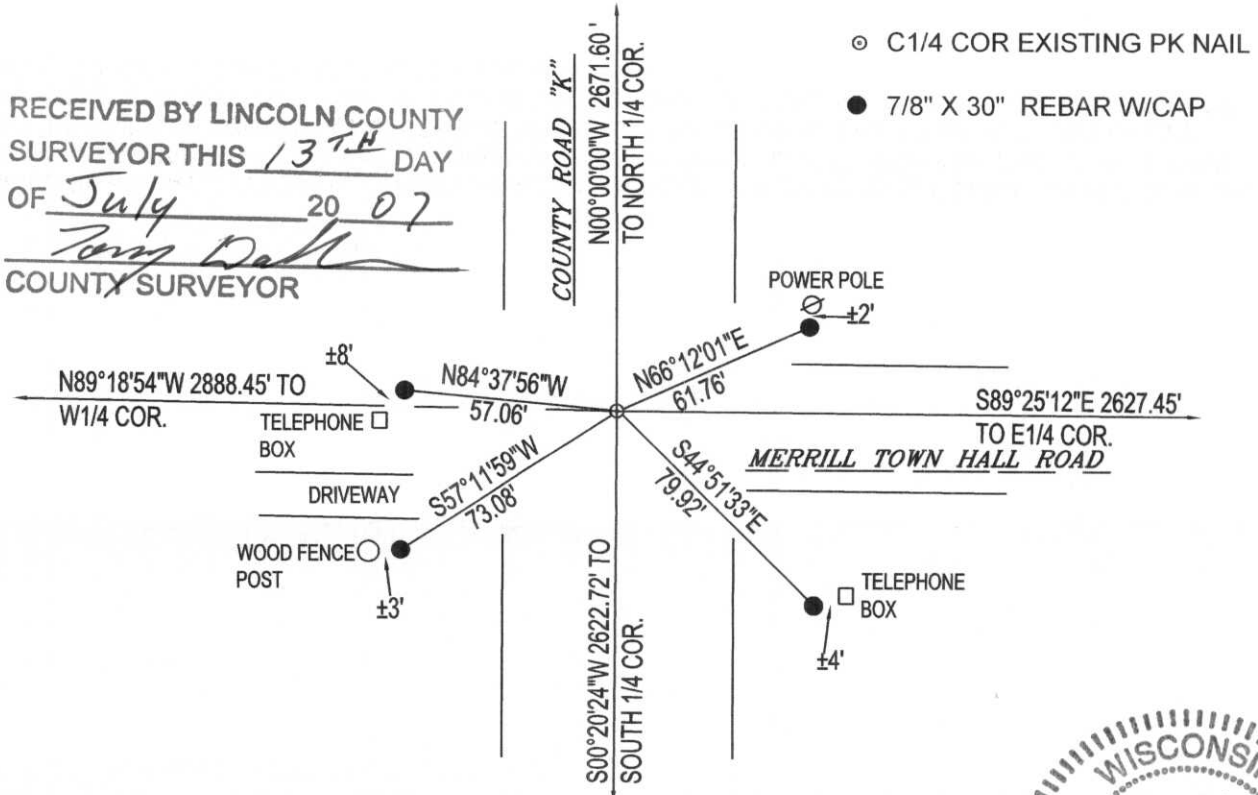


INDICATE CORNER LOCATION BY X

(B) (F) (G) (H) DESCRIPTION OF MONUMENT FOUND AT THIS CORNER AND IF IT WAS ACCEPTED, STATE ALL EVIDENCE (MATERIALS, TESTIMONIAL, OCCUPATIONAL, PLATS, RECORDS, OTHER MONUMENTS) USED AS A BASIS FOR ACCEPTING. IF NOT ACCEPTED OR IF NOTHING WAS FOUND, STATE EVIDENCE USED AS A BASIS FOR ESTABLISHING LOCATION. IF REESTABLISHED THROUGH LOST CORNER PROPORTIONATE METHODS, INDICATE ALL MONUMENTS, DISTANCES, AND DIRECTIONS USED TO ESTABLISH.

FOUND PK NAIL AT CENTERLINE COUNTY ROAD "K" AS CALLED FOR IN TIE SHEET DATED AUGUST 30TH 1974. FOUND NO REMAINING TIES. PK NAIL AGREES WITH IRONS FOUND IN PLAT OF SURVEY DONE IN 1972 AND RECORDED IN THE COUNTY SURVEYORS OFFICE AS MAP# L8C. PK NAIL FALLS 7.86 FEET EAST OF LINE FROM NORTH 1/4 CORNER TO SOUTH 1/4 CORNER (NORTH-SOUTH 1/4 LINE). HELD PK NAIL AS CENTER OF SECTION AND TIED OUT WITH RE-BARS AND CAPS.

(C) (D) (E) PLAN VIEW OF CORNER WITH TIES TO AT LEAST 4 WITNESS MONUMENTS. IF IN DISAGREEMENT WITH PREVIOUSLY ESTABLISHED CORNER, SHOW THE DISTANCES BETWEEN THE TWO CORNERS AND ALSO INDICATE THE TIES TO THE DISPUTED CORNER.



RECEIVED BY LINCOLN COUNTY  
 SURVEYOR THIS 13<sup>TH</sup> DAY  
 OF July 20 07  
Tony Dahl  
 COUNTY SURVEYOR

(I) I, GENE J. WADZINSKI RLS 2400  
 (TYPE OR PRINT NAME, LICENSE #) CERTIFY THAT THE CORNER LOCATION  
 ON THIS RECORD WAS PERPETUATED BY ME OR UNDER MY DIRECTION  
 AND CONTROL AND THAT THIS U.S. PUBLIC LAND SURVEY MONUMENT  
 RECORD IS CORRECT AND COMPLETE TO THE BEST OF MY KNOWLEDGE  
 AND BELIEF.

SIGNATURE Gene J. Wadzinski DATE 7/12/07



SEAL OR STAMP

5-3

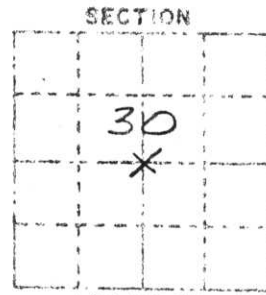
**MINX CAPITAL SURVEYING, INC.**  
**SURVEY MONUMENT LOCATION RECORD**

LANDMARK     BENCHMARK

FOUND   
 SET   
 RE-SET   
 RE-TIED

SECTION 30  
 TOWNSHIP 32  
 RANGE 7E

(CITY, VILLAGE, TOWN)  
LINCOLN



CORNER IDENTITY CTR, SEC 30  
 DATE OF SURVEY Aug 30, 1974  
 WEATHER \_\_\_\_\_  
 TEMPERATURE 70°±  
 SURVEY PART: D.T & D.M.

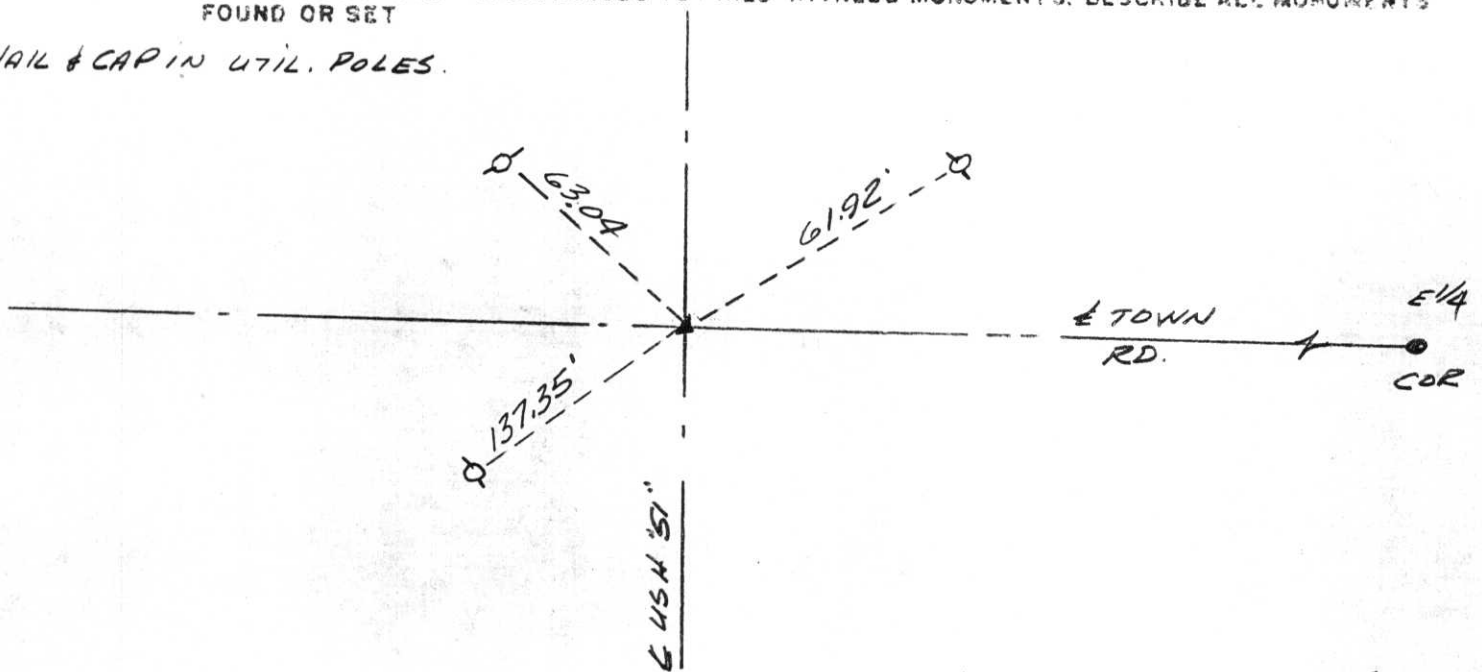
**BASIS FOR MONUMENT LOCATION**

DESCRIBE METHOD OF SURVEY AND CORNER AUTHENTICATION

*FOUND P.K. NAIL IN USH '51' & (POSSIBLY FROM SURVEY BY OTHERS)*

**TIE SKETCH** SHOW HORIZONTAL TIE DISTANCES TO FIXED WITNESS MONUMENTS. DESCRIBE ALL MONUMENTS FOUND OR SET

*NAIL & CAP IN UTIL. POLES.*



**30-32-7E**