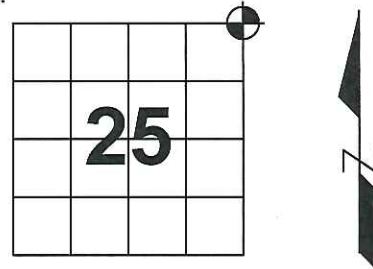


# U.S. PUBLIC LAND SURVEY MONUMENT RECORD

Note: This form is intended and designed to fulfill all requirements of Wisconsin Administrative Code, Chapter A-E 7.08, U.S. Public Land Survey Monument Record (3) (a) (b) (c) (d) (e) (f) (g) (h) (i). An additional sheet may be added if necessary to conform with said requirements.

(a) Corner location: Township 32 North  
 Range 7 East  
 Town/City/Village Schley  
 County Lincoln



(b) (f) (g) (h) Description of monument found at this corner and if it was accepted, state all evidence (material, testimonial, occupational, plats, records, other monuments) used as basis for accepting. If not accepted or if nothing was found, state evidence used as basis for establishing location. If reestablished through lost corner proportionate methods, indicate all monuments, distances and directions used to establish.

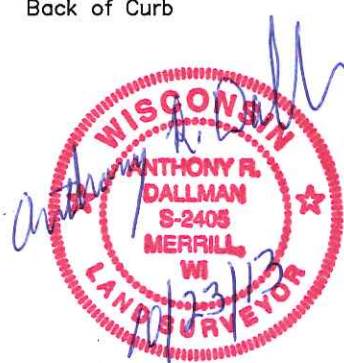
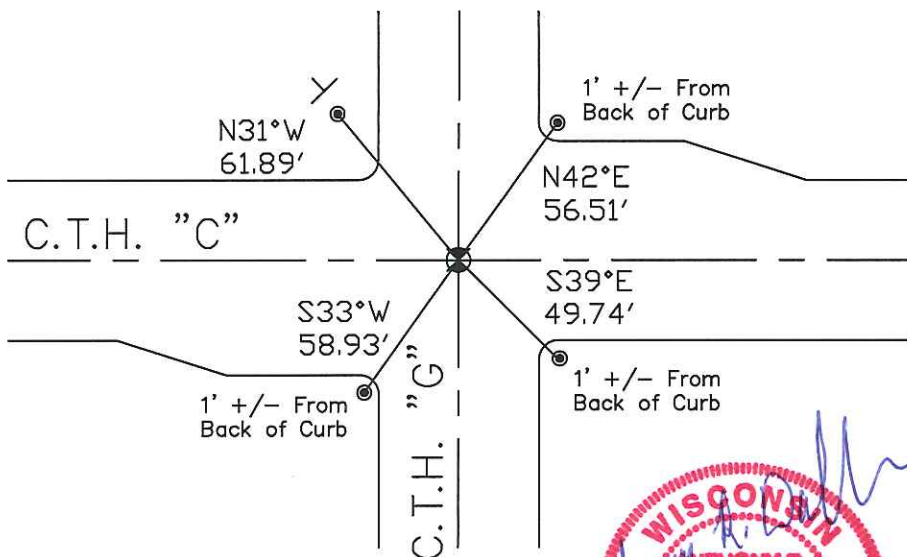
July 1851 – James M. Marsh set post common to Sections 19,24,25 and 30.  
 Ironwood 8 S42°E 15 lks  
 Sugar 24 S1/2°W 30 lks  
 Elm 12 N77°W 50 lks  
 Sugar 15 N10°E 22 lks

May 1995 – Lemke, David excavated the intersection of Highways "C" & "G" and found nothing. Set Berntsen monument at CL intersection.

June 2012 – Dallman, Anthony R. found Berntsen Monument and 4 ties. Set temporary control for construction.

Sept. 2013 – Dallman, Anthony R. set a Bernsten SMN-1 Nail at the previous corner location. Witnessed as shown below:

(c) (d) (e) Plan view of corner with ties to at least 4 witness monuments. If in disagreement with previously established corner, show the distance between the two corners and also indicate the ties to the disputed corner.



☒ -SET BERNTSEN SMN-1 NAIL  
 ● -SET 7/8" CAPPED REBAR  
 NOT TO SCALE

(i) I, Anthony R. Dallman  
 (type or print name) certify that the corner location on this record was determined by me or under my direction and control and that this U.S. Public Land Survey Monument Record is correct and complete to the best of my knowledge and belief.

Anthony R. Dallman Signature 10/23/13 Date

Index No. \_\_\_\_\_

# U.S. PUBLIC LAND SURVEY MONUMENT RECORD

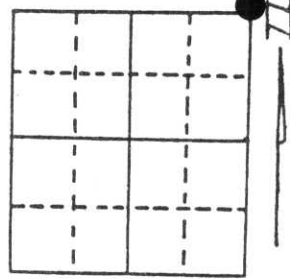
Note: This form is intended and designed to fulfill all requirements of Wisconsin Administrative Code, Chapter A-E 5.02, U.S. Public Land Survey Monument Record (3) (a) (b) (c) (d) (e) (f) (g) (h) (i). An additional sheet may be added if necessary to conform with said requirements.

(a) Corner location: Township 32 North

Range 7 East

Town/City/Village TOWN OF MERRILL

County LINCOLN

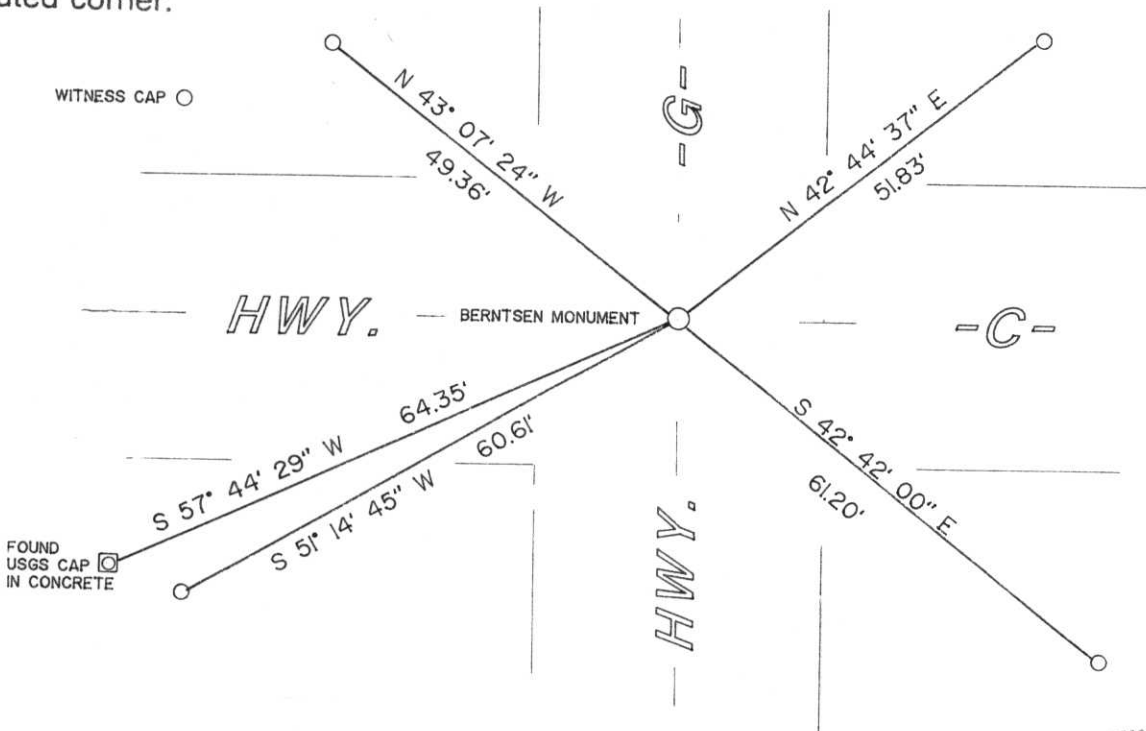


Section 25

(b) (f) (g) (h) Description of monument found at this corner and if it was accepted, state all evidence (material, testimonial, occupational, plats, records, other monuments) used as a basis for accepting. If not accepted or if nothing was found, state evidence used as basis for establishing location. If reestablished through lost corner proportionate methods, indicate all monuments, distances and directions used to establish.

EXCAVATED THE INTERSECTION OF HIGHWAYS "C" & "G" FOUND NOTHING. LOCAL RESIDENTS STATE THE CORNER FALLS IN THE CENTER OF THE INTERSECTION. SET A BERNTSEN MONUMENT.

(c) (d) (e) Plan view of corner with ties to at least 4 witness monuments. If in disagreement with previously established corner, show the distances between the two corners and also indicate the ties to the disputed corner.

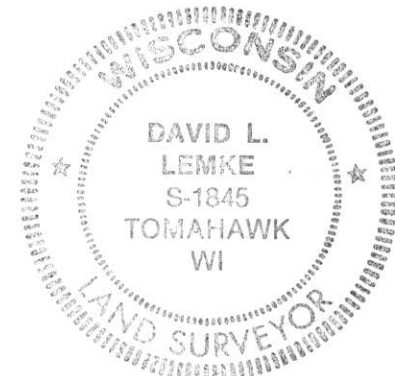


RECEIVED AT LINCOLN COUNTY  
COURTHOUSE THIS 25 DAY  
OF May 1995  
*[Signature]*  
TAX DESCRIPTION OFFICE

(i) I, DAVID L. LEMKE  
(type or print name) certify that the corner location on this record was determined by me or under my direction and control and that this U.S. Public Land Survey Monument Record is correct and complete to the best of my knowledge and belief.

*[Signature]*  
Signature

MAY 22 1995  
Date



Index No. Q-25