

U.S. PUBLIC LAND SURVEY MONUMENT RECORD

Note: This form is intended and designed to fulfill all requirements of Wisconsin Administrative Code, Chapter A-E 7.08, U.S. Public Land Survey Monument Record (3) (a) (b) (c) (d) (e) (f) (g) (h) (i). An additional sheet may be added if necessary to conform with said requirements.

(a) Corner location: Township 32 North
Range 7 East

Town ~~/City/ Village~~ Schley

County Lincoln



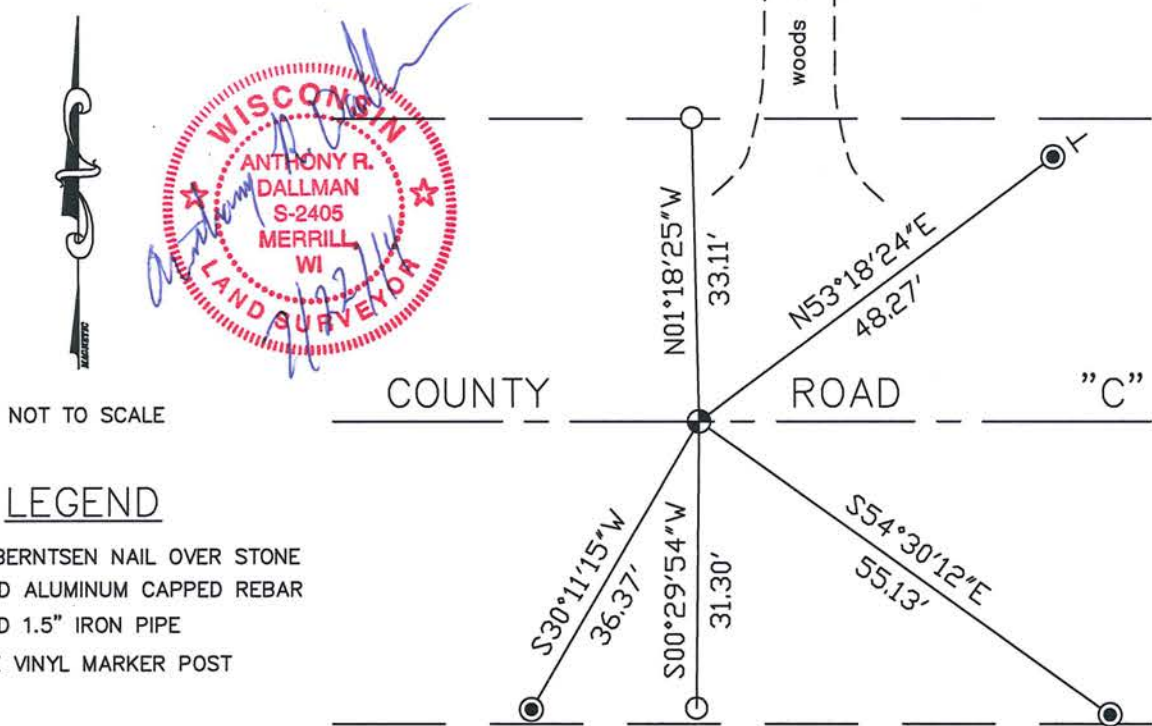
(b) (f) (g) (h) Description of monument found at this corner and if it was accepted, state all evidence (material, testimonial, occupational, plats, records, other monuments) used as a basis for accepting. If not accepted or if nothing was found, state evidence used as basis for establishing location. If reestablished through lost corner proportionate methods, indicate all monuments, distances and directions used to establish.

1852 - A.G. Ellis & F.S. Ellis set 1/4 Section post. 10" Hemlock, N 11° E, 43 links; 14" Linwood, S 12° E, 33 links.

05/22/1995 - D. Lemke, PLS-1845, found two (2) Iron Pipes on the North & South side of the highway with an existing old fence running South. Excavated in the highway and found a Granite Stone Monument, ±2' below the pavement. Set a 1" Iron Bar on the North side of the Stone and made reference ties to perpetuate the corner location.

06/21/2012 & 09/23/2013 & 05/29/2014 - I, Anthony Dallman, PLS-2405, located existing reference ties prior to roadwork and determined that the distance to the northerly tie was incorrect. I later returned and set a Berntsen SMN-1 Survey Marker Nail from existing reference ties and plumbed disturbed ties back to previous distances as shown in the sketch below.

(c) (d) (e) Plan view of corner with ties to at least 4 witness monuments. If in disagreement with previously established corner, show the distance between the two corners and also indicate the ties to the disputed corner.



- LEGEND**
- ⊕ - SET BERNTSEN NAIL OVER STONE
 - ⊙ - FOUND ALUMINUM CAPPED REBAR
 - - FOUND 1.5" IRON PIPE
 - ∨ - WHITE VINYL MARKER POST

(i) I, Anthony R. Dallman

(type or print name) certify that the corner location on this record was determined by me under my direction and control and that this U.S. Public Land Survey Monument Record is correct and complete to the best of my knowledge and belief.

Anthony R. Dallman
Signature

7/22/14
Date

Index No. Q-23

U.S. PUBLIC LAND SURVEY MONUMENT RECORD

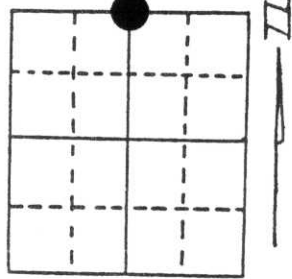
Note: This form is intended and designed to fulfill all requirements of Wisconsin Administrative Code, Chapter A-E 5.02, U.S. Public Land Survey Monument Record (3) (a) (b) (c) (d) (e) (f) (g) (h) (i). An additional sheet may be added if necessary to conform with said requirements.

(a) Corner location: Township 32 North

Range 7 East

Town/City/Village TOWN OF MERRILL

County LINCOLN

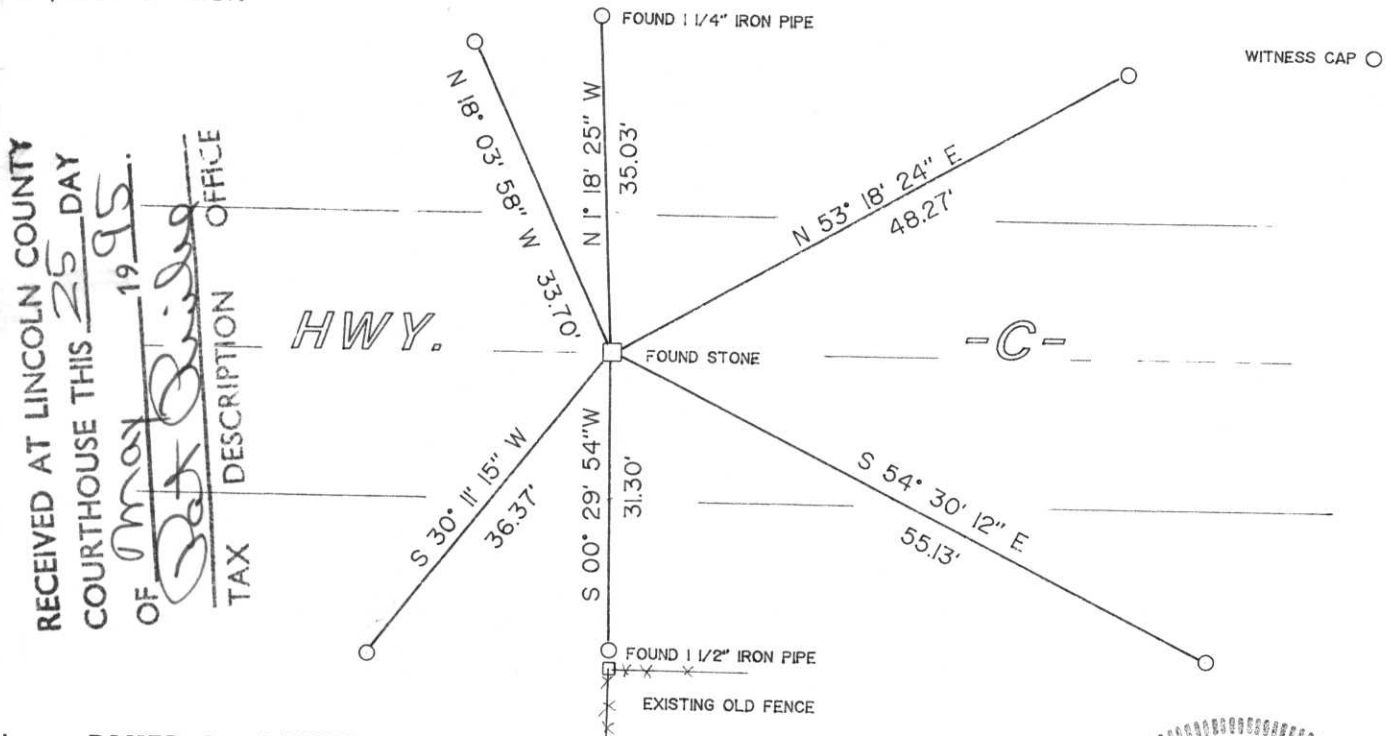


Section 25

(b) (f) (g) (h) Description of monument found at this corner and if it was accepted, state all evidence (material, testimonial, occupational, plats, records, other monuments) used as a basis for accepting. If not accepted or if nothing was found, state evidence used as basis for establishing location. If reestablished through lost corner proportionate methods, indicate all monuments, distances and directions used to establish.

FOUND 2 IRON PIPES ON THE NORTH & SOUTH SIDE OF THE HIGHWAY. WITH AN EXISTING OLD FENCE RUNNING SOUTH. EXCAVATED THE HIGHWAY AND FOUND A GRANITE STONE ± 2.5' BELOW THE PAVEMENT. SET A 1" BAR ON THE NORTH SIDE OF THE STONE.

(c) (d) (e) Plan view of corner with ties to at least 4 witness monuments. If in disagreement with previously established corner, show the distances between the two corners and also indicate the ties to the disputed corner.



RECEIVED AT LINCOLN COUNTY
 COURTHOUSE THIS 25 DAY
 OF MAY 1995.
Bob Briley
 TAX DESCRIPTION OFFICE

HWY.

-C-

(i) I, DAVID L. LEMKE

(type or print name) certify that the corner location on this record was determined by me or under my direction and control and that this U.S. Public Land Survey Monument Record is correct and complete to the best of my knowledge and belief.

David Lemke
 Signature

MAY 22 1995

Date



Index No. Q-23