

U.S. PUBLIC LAND SURVEY MONUMENT RECORD

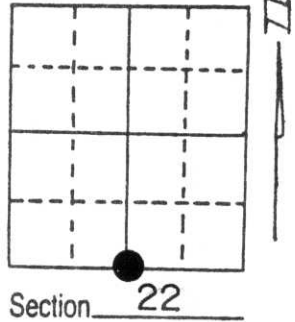
Note: This form is intended and designed to fulfill all requirements of Wisconsin Administrative Code, Chapter A-E 5.02, U.S. Public Land Survey Monument Record (3) (a) (b) (c) (d) (e) (f) (g) (h) (i). An additional sheet may be added if necessary to conform with said requirements.

(a) Corner location: Township 32 North

Range 7 East

Town/City/Village TN. OF MERRILL

County LINCOLN



(b) (f) (g) (h) Description of monument found at this corner and if it was accepted, state all evidence (material, testimonial, occupational, plats, records, other monuments) used as a basis for accepting. If not accepted or if nothing was found, state evidence used as basis for establishing location. If reestablished through lost corner proportionate methods, indicate all monuments, distances and directions used to establish.

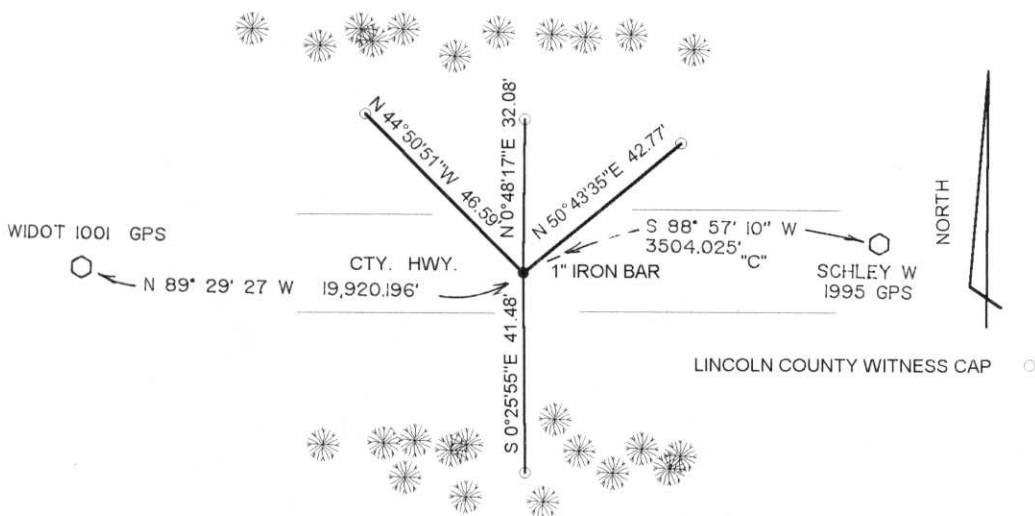
ORIGINAL CORNER SET IN 1852

1987 SEYMOUR SET A CORNER EQUAL DISTANCE BETWEEN SW & SE SEC 22

I FOUND SEYMOUR'S CORNER AND 2 OF HIS TIES

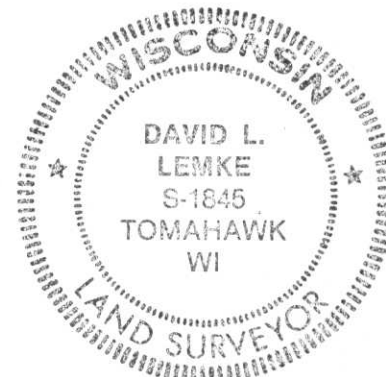
**RECEIVED AT LINCOLN COUNTY
COURTHOUSE THIS 28th DAY
OF June 19 96
Pat Pruebe
TAX DESCRIPTION OFFICE**

(c) (d) (e) Plan view of corner with ties to at least 4 witness monuments. If in disagreement with previously established corner, show the distances between the two corners and also indicate the ties to the disputed corner.



(i) I, DAVID L. LEMKE
(type or print name) certify that the corner location on this record was determined by me or under my direction and control and that this U.S. Public Land Survey Monument Record is correct and complete to the best of my knowledge and belief.

David Lemke 6.13.96
Signature Date



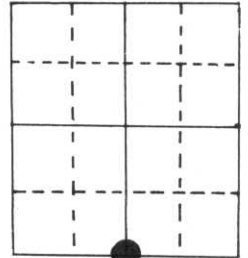
Index No. Q-15

U.S. PUBLIC LAND SURVEY MONUMENT RECORD

Note: This form is intended and designed to fulfill all requirements of Wisconsin Administrative Code, Chapter A-E 5.02, U.S. Public Land Survey Monument Record (3) (a) (b) (c) (d) (e) (f) (g) (h) (i). An additional sheet may be added if necessary to conform with said requirements.

(a) Corner location: Township 32 North
 Range 7 East ~~West~~

Town/City/Village Merrill
 County Lincoln

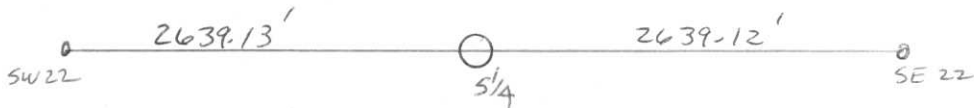


Section 22

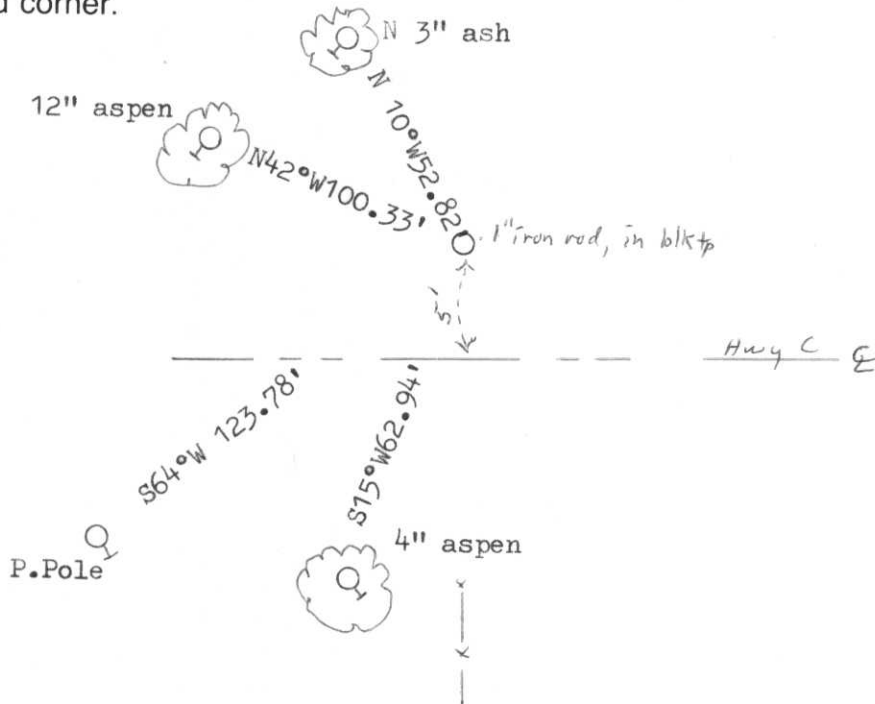
(b) (f) (g) (h) Description of monument found at this corner and if it was accepted, state all evidence (material, testimonial, occupational, plats, records, other monuments) used as a basis for accepting. If not accepted or if nothing was found, state evidence used as basis for establishing location. If reestablished through lost corner proportionate methods, indicate all monuments, distances and directions used to establish.

Original in 1852, OBT's heml 14" east 22 lks., sugar 18" N14°W 13 lks.

Seymour in 1987 set proportioned corner, no evidence left of original.



(c) (d) (e) Plan view of corner with ties to at least 4 witness monuments. If in disagreement with previously established corner, show the distances between the two corners and also indicate the ties to the disputed corner.



(i) I, Marvin E. Seymour
 (type or print name) certify that the corner location on this record was determined by me or under my direction and control and that this U.S. Public Land Survey Monument Record is correct and complete to the best of my knowledge and belief.

Marvin E. Seymour Dec. 4, 1987
 Signature Date



Q-15



9 1:43 PM



3 1:48 PM

9 1:49 PM



LINCOLN COUNTY
COUNTY SURVEYOR

DODGE

RAM