

U.S. PUBLIC LAND SURVEY MONUMENT RECORD

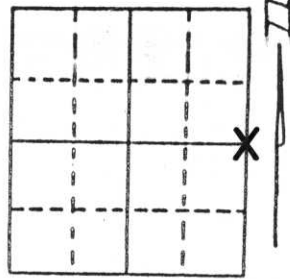
Note: This form is intended and designed to fulfill all requirements of Wisconsin Administrative Code, Chapter A-E 5.02, U.S. Public Land Survey Monument Record (3) (a) (b) (c) (d) (e) (f) (g) (h) (i). An additional sheet may be added if necessary to conform with said requirements.

(a) Corner location: Township 32 North

Range 7 East

Town/City/Village SCHLEY

County LINCOLN



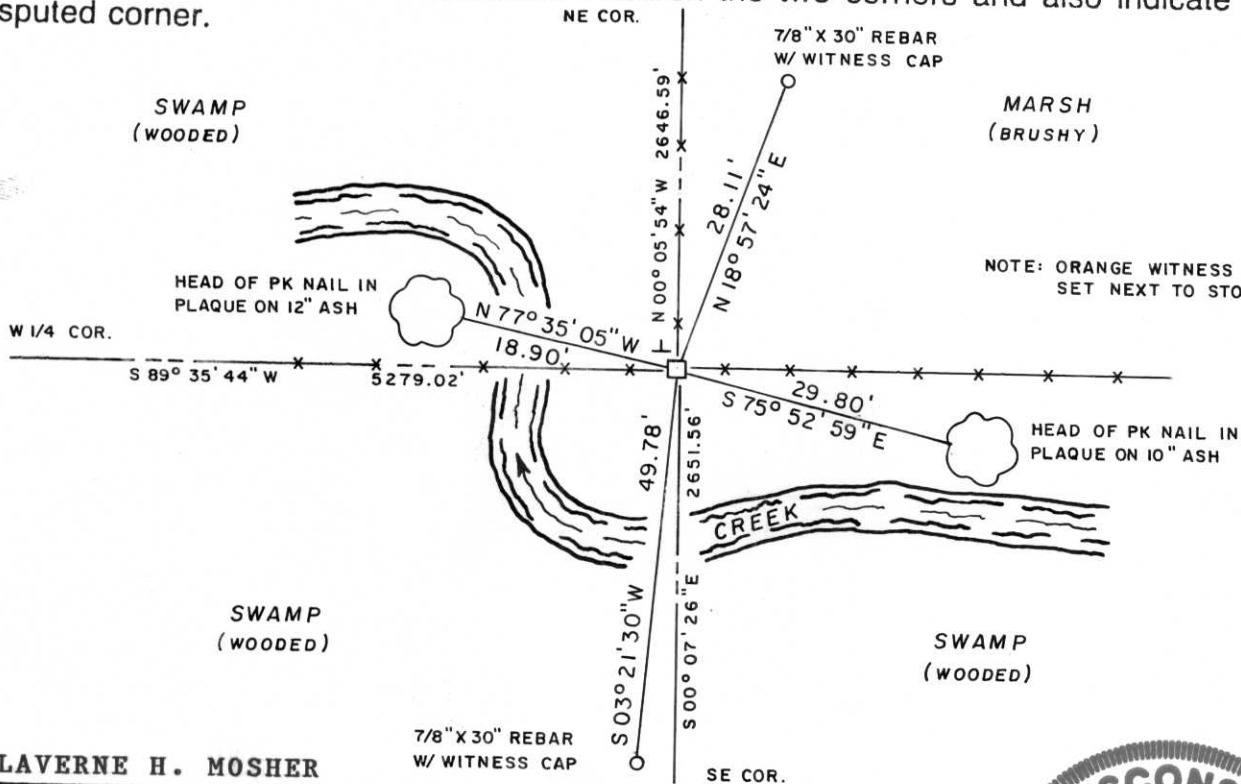
Section 23

(b) (f) (g) (h) Description of monument found at this corner and if it was accepted, state all evidence (material, testimonial, occupational, plats, records, other monuments) used as a basis for accepting. If not accepted or if nothing was found, state evidence used as basis for establishing location. If reestablished through lost corner proportionate methods, indicate all monuments, distances and directions used to establish.

Original Corner - Wood Post set by A.F. Ellis, 1852.
Resurveyed and Monumented by Francis Fox, 1930's.

Traversed all of Section 23 to establish center-section for survey of privately owned parcel of land. At this corner location, we found an old fence corner with fence lines running to East, West and North from fence intersection. No monument was visible but by probing the fence corner area we recovered a Red Granite stone monument measuring 7" x 7" x 36" with drill holes along sides and a chisel line and small drill hole on top of Monument. Stone was found lying flat but hole in ground at base of stone was evidence as to its former position. Reset stone in its former position such that top protrudes about 12" above ground.

(c) (d) (e) Plan view of corner with ties to at least 4 witness monuments. If in disagreement with previously established corner, show the distances between the two corners and also indicate the ties to the disputed corner.



(i) LAVERNE H. MOSHER

(type or print name) certify that the corner location on this record was determined by me or under my direction and control and that this U.S. Public Land Survey Monument Record is correct and complete to the best of my knowledge and belief.

LaVerne H. Mosher

Signature

MAY 25, 1995

Date



RECEIVED AT LINCOLN COUNTY COURTHOUSE THIS 25 DAY OF May 1995
 TAX DESCRIPTION OFFICE

Index No. 12-0-21