

CERTIFIED LAND CORNER RESTORATION

Index No. M-25

State of Wisconsin }
 County of Lincoln } ss.

I, Sheridan D. Schwark, do hereby certify that on the 16th day of November, 1979, I found evidence of the Southeast corner of Section 13 Township 32, North, Range 7 East, Fourth, Principal Meridian, as described hereon; and that from this evidence I established a new monument and accessories as described hereon to perpetuate the original location of this corner.

Resident witnesses:

.....

.....

.....

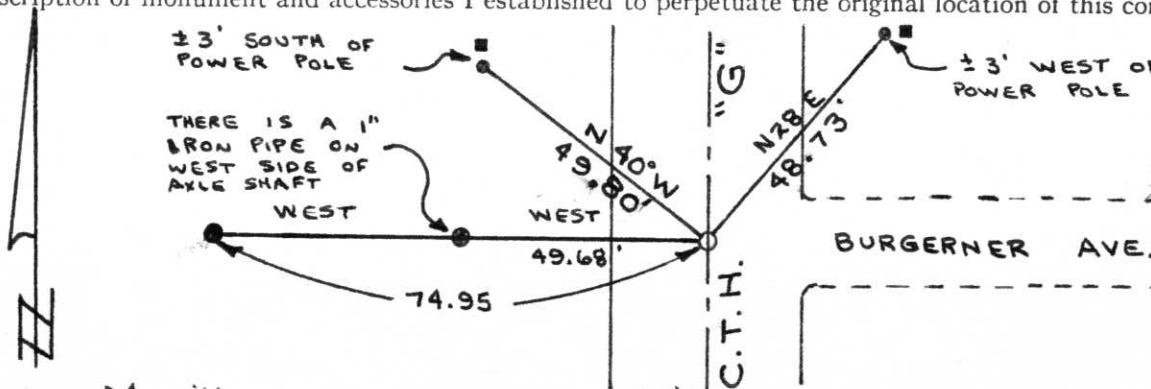
History of original corner establishment:

Date: July 1851
 Surveyor: James M. Marsh
 Monument: Wood Post
 Witnesses: 14" Birch, S42E, 58 links
14" Birch, S28W, 33 links
18" Hemlock, N74°W, 34 links
12" Hemlock, N55°E, 37 links

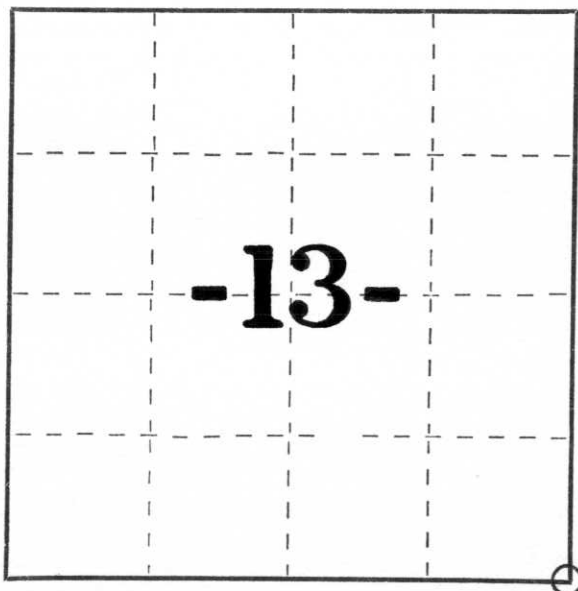
Description of corner evidence found:

We found two existing ties which were set by Francis Fox, R.L.S., according to Al Neumann, who worked with Francis Fox. We extended the line between the two monuments to the centerline of C.T.H. "G". The distance from the closest monument fit 50' well. We dug and found a 6" x 6" red granite monument, upright, approximately 2' below grade. We set 3 - 6" Lincoln County Berntsen Monument extensions with a cap above the granite monument.

Description of monument and accessories I established to perpetuate the original location of this corner.



- = 3/4" x 30" IRON ROD SET
- = 2" AXLE SHAFT FOUND IN PLACE
- = LINCOLN COUNTY BERNTSEN MONUMENT SET
- = POWER POLE



○ = Corner monument restored.

Dated at Merrill, Wis., this 26th day of November, 1979.

Signature Sheridan D. Schwark Title Registered Land Surveyor Registration No. S-1205
 (County Surveyor, Registered Land Surveyor, or other duly authorized official)

Office of Register of Deeds, County of _____, I hereby certify that the within instrument was filed in this office for record on the _____ day of _____, 19____ at _____ o'clock _____ M.

(Register of Deeds)

By _____ Deputy