

LINCOLN COUNTY U.S. PUBLIC LAND SURVEY MONUMENT LOCATION RECORD

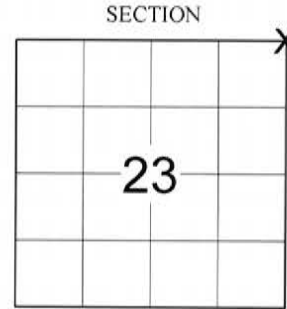
SECTION 23
TOWNSHIP 32 N
RANGE 7E

M-21
NO.

LANDMARK BENCHMARK _____
CORNER IDENTITY: 1" REBAR
FOUND SET
RESET RE-TIED

SCHLEY
CITY, VILLAGE, TOWN

LINCOLN COUNTY COORDINATE: N: 147958.315
E: 423205.371



LOCATION
(Indicated By X)

ELEVATION-(FEET): _____ DATUM: NAD83 (2011)

WEATHER: PARTLY CLOUDY

DATE OF SURVEY: 5-3-2018 TEMPERATURE: 55 °F

SURVEY PARTY: KEITH WALKOWSKI / AUSTIN PELOT

BASIS FOR MONUMENT LOCATION:
(DESCRIBE METHOD OF SURVEY AND CORNER AUTHENTICATION)

SEARCHED FOR THE NORTHEAST CORNER AND FOUND A BROKEN LEANING BERNTSEN ALUMINUM MONUMENT AND THREE OVRGROWN TIES FROM THE 1979 TIESHEET BY SHERIDAN SCHWARK. DUG FURTHUR DOWN AND FOUND THE ENTIRE DISTURBED BERNTSEN MONUMENT. SET A 1" REBAR USING THE THREE REMAINING TIES TO RESET THE CORNER AND SET FOUR NEW TIES TO PERPETUATE THE CORNER LOCATION AS SHOWN BELOW.



FIELD BOOK NO. NA PAGE NO. NA

COMPANY RIVERSIDE LAND SURVEYING LLC

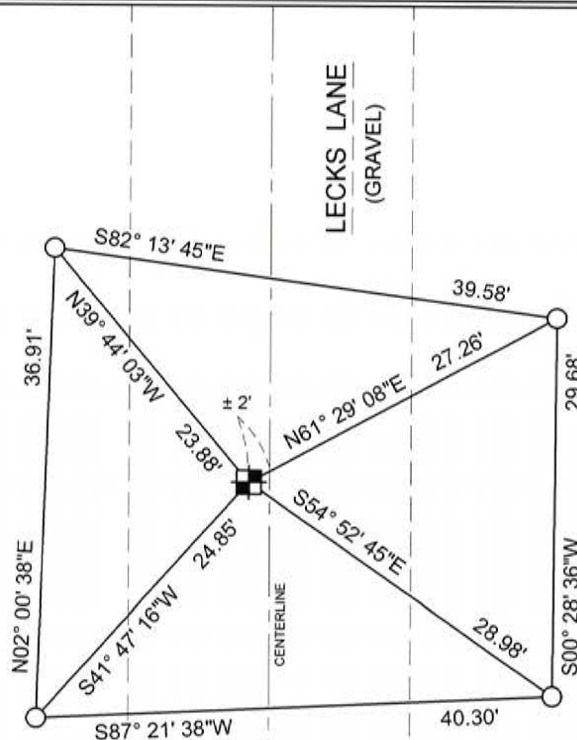
CERTIFIED CORRECT:
Keith J. Walkowski
KEITH J. WALKOWSKI S-2717
Professional Land Surveyor
DATE: MAY 15TH, 2018

TIE SKETCH:

- SET 1" REBAR
- SET 1" REBAR WITH ALUMINUM CAP

RECEIVED BY LINCOLN COUNTY
SURVEYOR THIS 15th DAY
OF May 20 18
Tony Dahl
COUNTY SURVEYOR

BEARINGS ARE BASED ON THE LINCOLN COUNTY COORDINATE SYSTEM NAD 83 (2011) AND REFERENCED AS SHOWN
THIS DRAWING IS NOT TO SCALE



M-21
NO.

CERTIFIED LAND CORNER RESTORATION

Index No. M-21

State of Wisconsin }
 County of Lincoln } ss.

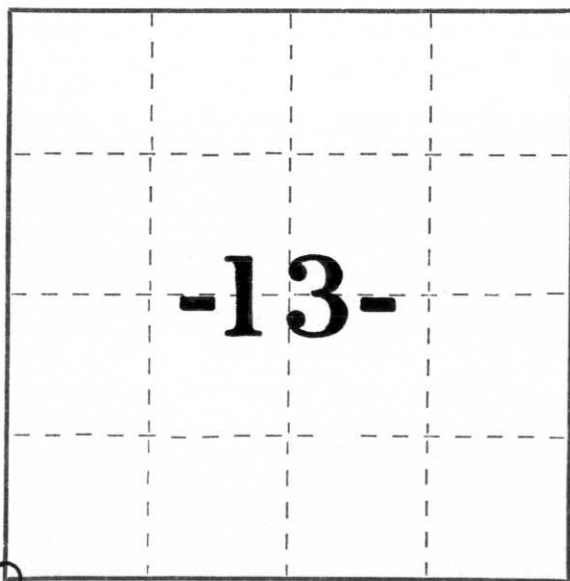
I, Sheridan D. Schwark, do hereby certify that on the 7th day of November, 1979, I found evidence of the Southwest corner of Section 13 Township 32, North, Range 7 East, Fourth, Principal Meridian, as described hereon; and that from this evidence I established a new monument and accessories as described hereon to perpetuate the original location of this corner.

Resident witnesses:

.....

.....

.....



○ = Corner monument restored.

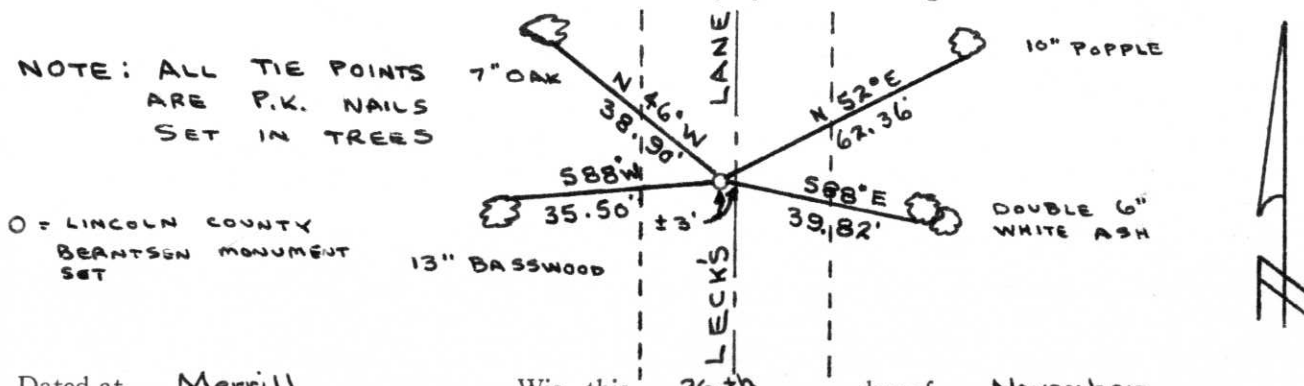
History of original corner establishment:

Date: April 1852
 Surveyor: A.G. & F.S. Ellis
 Monument: Wood Post
 Witness monuments were omitted on the original notes.

Description of corner evidence found:

A 1937 S.T.H. "17" highway plan shows a stone monument 320' South of the centerline of S.T.H. "17". We measured the 320' from the existing centerline of S.T.H. "17" and excavated Leck's Lane with a backhoe. We found a 7" x 7" x 32" red granite monument lying on its side. A obvious hole filled with rotten granite with original soil around was along side the stone. This appeared to be the original hole that the stone was in before it was knocked out. We set a Lincoln County Berntsen Monument at that location.

Description of monument and accessories I established to perpetuate the original location of this corner.



Dated at Merrill, Wis., this 26th day of November, 1979.

Signature Sheridan D. Schwark Title Registered Land Surveyor Registration No. S-1205
 (County Surveyor, Registered Land Surveyor, or other duly authorized official)

Office of Register of Deeds, County of _____, I hereby certify that the within instrument was filed in this office for record on the _____ day of _____, 19____ at _____ o'clock _____ M.

(Register of Deeds)

By _____ Deputy