

U.S. PUBLIC LAND SURVEY MONUMENT RECORD

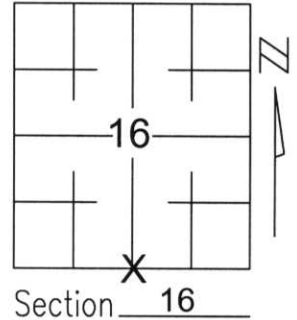
Note: This form is intended and designed to fulfill all requirements of Wisconsin Administrative Code, Chapter A-E 5.02, U.S. Public Land Survey Monument Record (3)(a)(b)(c)(d)(e)(f)(g)(h)(i). An additional sheet may be added if necessary to conform with said requirements.

(a) Corner location: Township 32 North

Range 7 East

Town/City/Village MERRILL

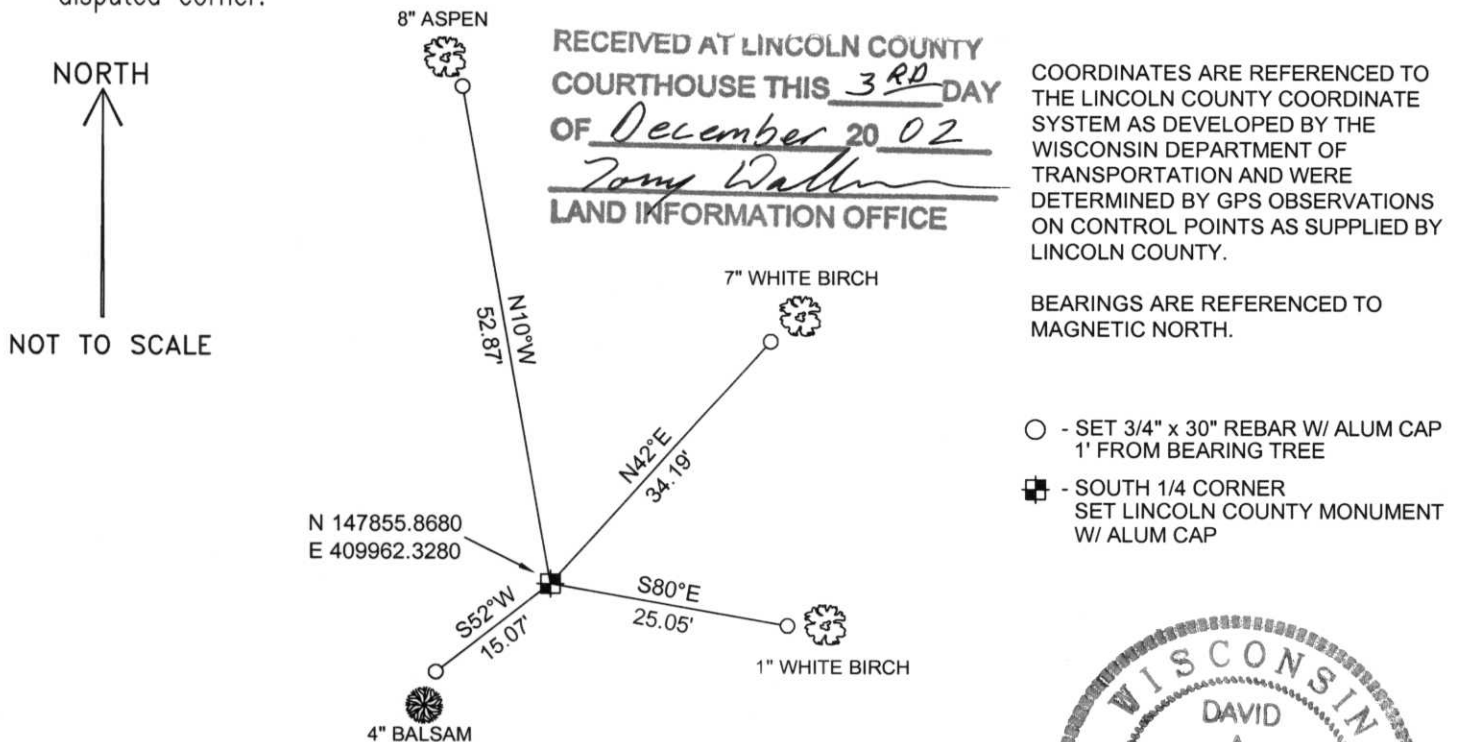
County LINCOLN



(b)(f)(g)(h) Description of monument found at this corner and if it was accepted, state all evidence (material, testimonial, occupational, plats, records, other monuments) used as a basis for accepting. If not accepted or if nothing was found, state evidence used as basis for establishing location. If reestablished through lost corner proportionate methods, indicate all monuments, distances and directions used to establish.

SEARCHED FOR CORNER EVIDENCE. LOCATED THE EXISTING TRAIL RUNNING FROM THE SOUTHWEST CORNER OF 16. FOUND NAIL WITH GUARD POST AT 1320.25' EAST OF SOUTHWEST CORNER OF 16. FOUND A NAIL WITH GUARD POST NEAR 40 CORNER NORTH OF THE SOUTH 1/4 CORNER. SET LINCOLN COUNTY MONUMENT W/ ALUM CAP ON CUT PATH AT PRORATED DISTANCE FROM SOUTHWEST TO SOUTHEAST, TO PERPETUATE CORNER LOCATION.

(c)(d)(e) Plan view of corner with ties to at least 4 witness monuments. If in disagreement with previously established corner, show the distances between the two corners and also indicate the ties to the disputed corner.



(i) I, David A. Renaud, RLS certify that the corner location on this record was determined by me or under my direction and control and that this U.S. Public Land Survey Monument Record is correct and complete to the best of my knowledge and belief.



David Renaud 11-29-02
Signature Date

Index No. 163277

M-11