

CERTIFIED LAND CORNER RESTORATION

Index No. K-25

State of Wisconsin }
 County of Lincoln } ss.

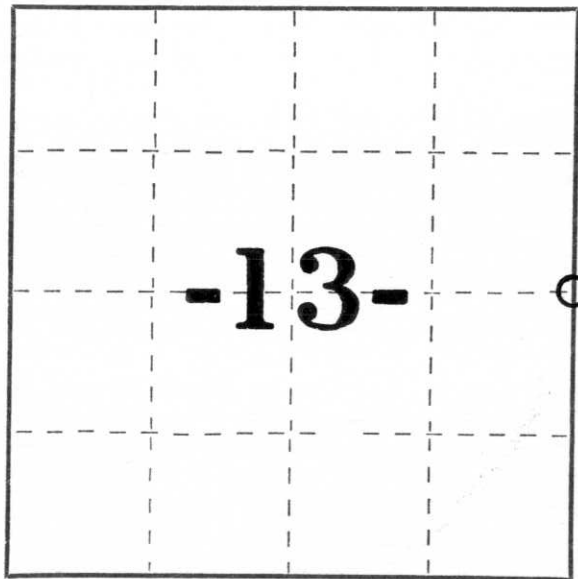
I, Sheridan D. Schwark, do hereby certify that on the 20th day of November, 1979, I found evidence of the East one-quarter corner of Section 13 Township 32, North, Range 7 East, Fourth, Principal Meridian, as described hereon; and that from this evidence I established a new monument and accessories as described hereon to perpetuate the original location of this corner.

Resident witnesses:

.....

.....

.....



○ = Corner monument restored.

History of original corner establishment:

Date: July, 1851

Surveyor: James M. Marsh

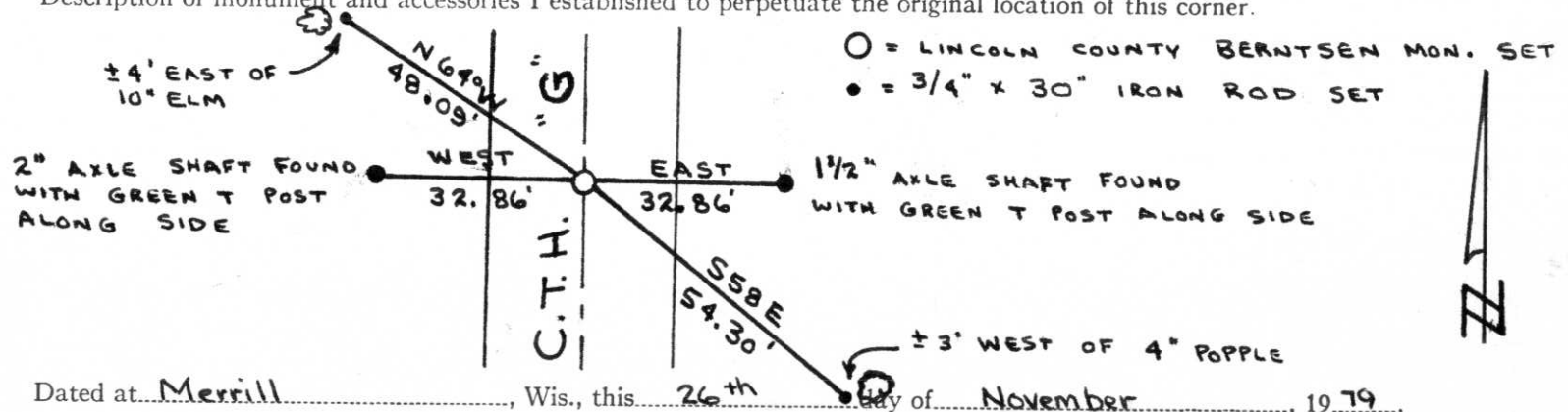
Monument: Wood Post

Witnesses: 10" Birch, S18°E, 30 links
 18" Hemlock, S2°W, 6 links
 9" Hemlock, N60°W, 34 links
 14" Hemlock, N27°E, 38 links

Description of corner evidence found:

We found two existing ties which were set by Francis Fox, R.L.S., according to Al Neumann, who worked with Francis Fox. We measured the distance between the two ties, divided it in half, dug and found a red granite monument directly West of this point. The granite monument was leaning West. Therefore, we decided to set the new monument at the distance established from the existing ties, since Francis Fox intended to set his ties at 33' from the granite and those ties fit reasonably. We set 4 - 6" Lincoln County Berntsen Monument extensions with a cap along side the leaning granite as the corner.

Description of monument and accessories I established to perpetuate the original location of this corner.



Dated at Merrill, Wis., this 26th day of November, 1979.

Signature Sheridan D. Schwark Title Registered Land Surveyor Registration No. S-1205
 (County Surveyor, Registered Land Surveyor, or other duly authorized official)

Office of Register of Deeds, County of _____, I hereby certify that the within instrument was filed in this office for record on the _____ day of _____, 19____ at _____ o'clock _____ M.

(Register of Deeds)

By _____ Deputy