

CERTIFIED LAND CORNER RESTORATION

Index No. I-1

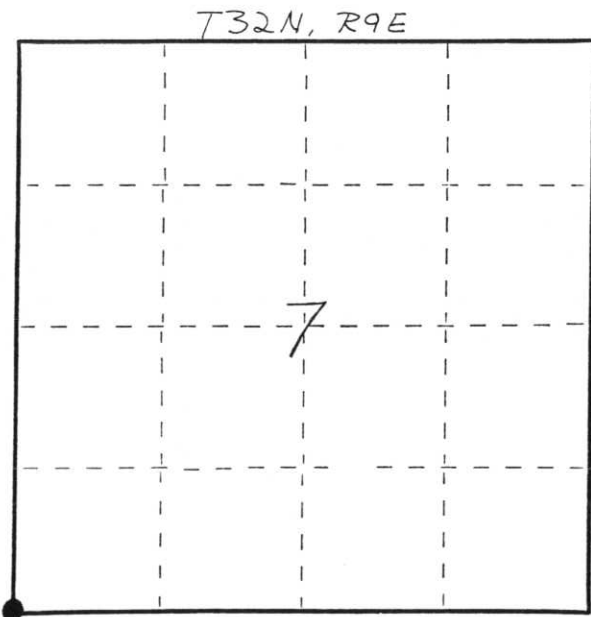
State of Wisconsin }
County of LANGLADE } ss.

I WILLIAM F. KELLY, do hereby certify that on the 3RD day of DEC., 1981, I found evidence of the SW corner of SEC. 7 Township 32, North, Range 9 EAST, Fourth Principal Meridian, as described hereon; and that from this evidence I established a new monument and accessories as described hereon to perpetuate the original location of this corner.

Resident witnesses:

EMIL FOLTA

FORM 985 H. C. MILLER CO., MILWAUKEE



○ = Corner monument restored.

History of original corner establishment:

ORIGINAL CORNER ESTABLISHED BY
HIRAM C. FELLOWS IN SEPT., 1860.

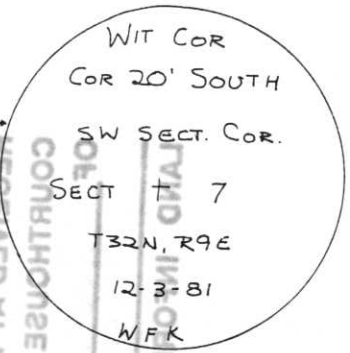
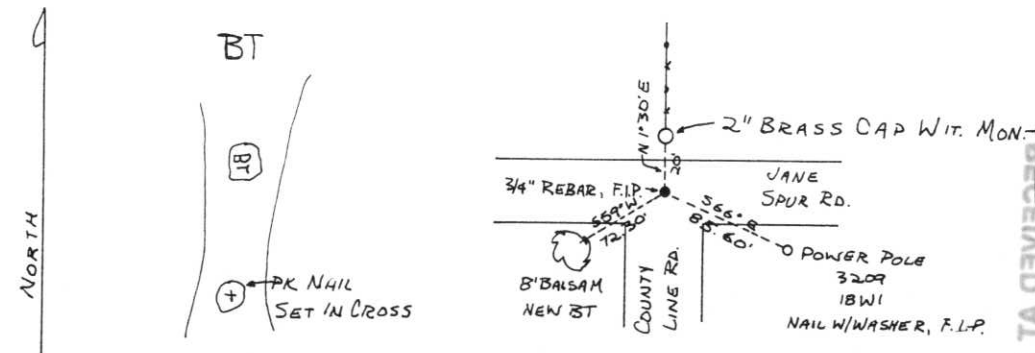
CRANITE MON. SET IN 1930's
REPLACED WITH STEEL BAR
PER RESIDENT WITNESS

SE Sec 12-32-8

Description of corner evidence found:

3/4" REBAR, FOUND IN PLACE.
SET A 2" x 42" BLACK IRON
PIPE WITH BRASS CAP
MONUMENT. WIT. COR.

Description of monument and accessories I established to perpetuate the original location of this corner.



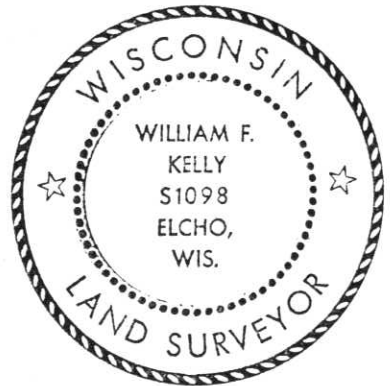
Dated at ELCHO, Wis., this 3RD day of DEC., 1981.

Signature William F. Kelly Title COUNTY SURVEYOR Registration No. 1098
(County Surveyor, Registered Land Surveyor, or other duly authorized official)

Office of Register of Deeds, County of....., I hereby certify that the within instrument was filed in this office for record on the..... day of....., 19..... at..... o'clock..... M.

(Register of Deeds)

By..... Deputy



RECEIVED AT REC'D IN ORIGINAL FILE
DAY
MIS
OFFICE
12-3-81

CERTIFIED LAND CORNER RESTORATION

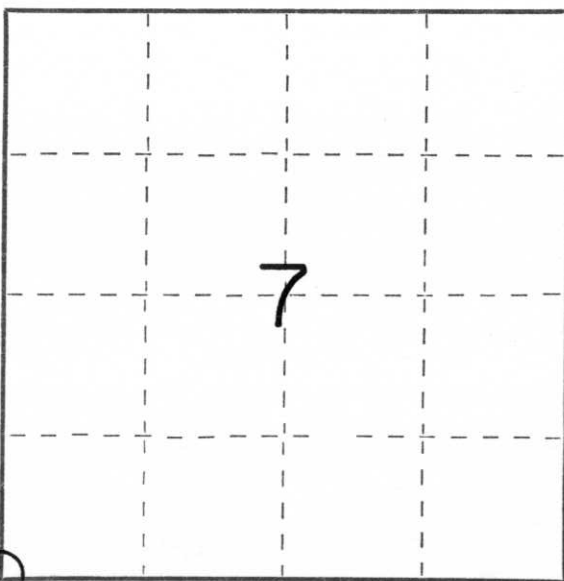
Index No. I-1

State of Wisconsin }
County of Lincoln } ss.

I Sheridan D. Schwark, do hereby
certify that on the 15th day
of August, 1979, I found
evidence of the southwest
corner of Section 7
Township 32, North, Range
8 East, Fourth, Principal Meridian,
as described hereon; and that from this evidence
I established a new monument and accessories
as described hereon to perpetuate the original
location of this corner.

Resident witnesses:

.....
.....
.....



○ = Corner monument restored.

History of original corner establishment:

Date: July 1851
Surveyor: James Marsh
Monument: Wood Post
Witnesses: 10" Hemlock S22E 18 links
10" Tamarack S40W 29 links
10" Birch N56W 7 links
11" Hemlock N80E 37 links

Description of corner evidence found:

We found a 6"x6" red granite monument with its top 1.3' above grade. It was leaning to the East. We reset the stone from ties on C.S.M. dated Dec. 2, 1975 by registered land surveyor Sheridan D. Schwark. We left the top 0.9' above grade.

Description of monument and accessories I established to perpetuate the original location of this corner. The ties from the above mentioned C.S.M. are:
P.K. nail in 22" elm N14W 72.6'
SE corner of house foundation S60W 59.0'

The additional ties we set are:
3/4"x30" iron rod set about 1' SE of 9" red pine N32W 4.15'
NW corner of house foundation S89W 74.39'

We set a 3/4"x30" iron rod on the north side of the stone

Dated at Wausau, Wis., this 14th day of September, 1979.

Signature Sheridan D. Schwark Title Registered Land Surveyor Registration No S-1205
(County Surveyor, Registered Land Surveyor, or other duly authorized official)

Office of Register of Deeds, County of _____, I hereby certify that the within instrument was filed in this office for record on the _____ day of _____, 19____ at _____ o'clock _____ M.

.....
(Register of Deeds)

By _____ Deputy