

CERTIFIED LAND CORNER RESTORATION

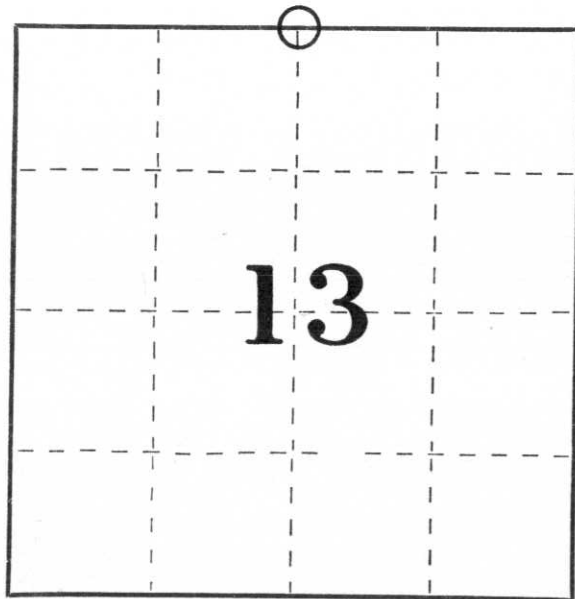
Index No. I-23

State of Wisconsin }  
County of Lincoln } ss.

I, Sheridan D. Schwark, do hereby certify that on the 19th day of December, 1980, I found evidence of the N1/4 corner of Section 13 Township 32, North, Range 7 East, Fourth, Principal Meridian, as described hereon; and that from this evidence I established a new monument and accessories as described hereon to perpetuate the original location of this corner.

Resident witnesses:

.....  
.....  
.....



○ = Corner monument restored.

History of original corner establishment:

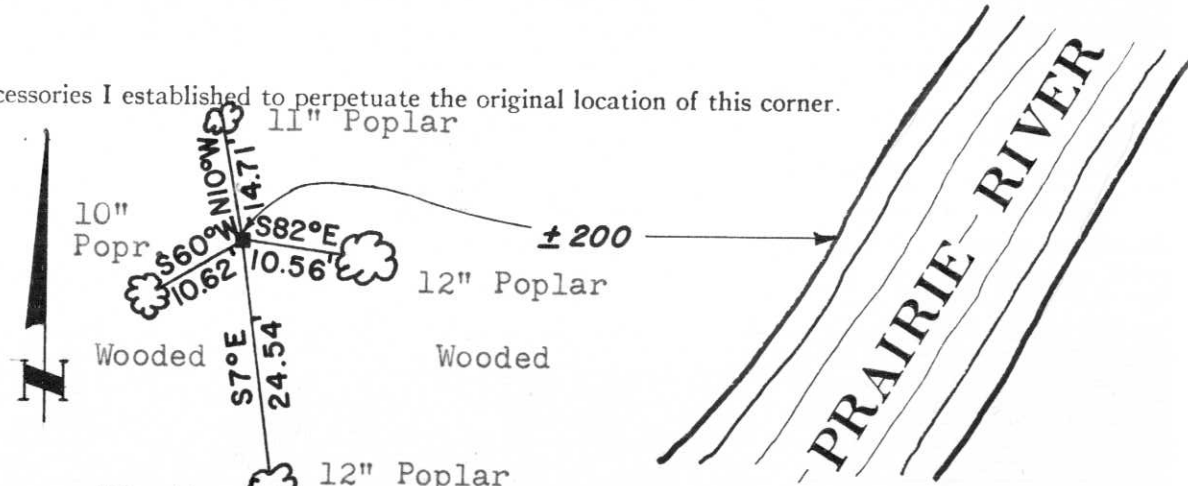
Wood post set by original government surveyor.

Description of corner evidence found:

We found a 7" x 7" red granite monument up approximately 1' above grade.

Description of monument and accessories I established to perpetuate the original location of this corner.

NOTE: All trees are blazed and have P.K. nails set in them.



Dated at Wausau, Wis., this 14 day of December, 1980

Signature Sheridan D. Schwark Title Registered Land Surveyor Registration No. S-1205  
(County Surveyor, Registered Land Surveyor, or other duly authorized official)

Office of Register of Deeds, County of \_\_\_\_\_, I hereby certify that the within instrument was filed in this office for record on the \_\_\_\_\_ day of \_\_\_\_\_, 19\_\_\_\_ at \_\_\_\_\_ o'clock \_\_\_\_\_ M.

.....  
(Register of Deeds)

By \_\_\_\_\_ Deputy

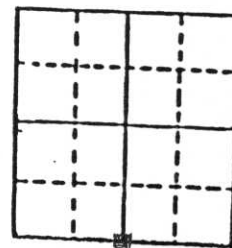
# U.S. PUBLIC LAND SURVEY MONUMENT RECORD

**Note:** This form is intended and designed to fulfill all requirements of Wisconsin Administrative Code, Chapter A-E 5.02, U.S. Public Land Survey Monument Record (3) (a) (b) (c) (d) (e) (f) (g) (h) (i). An additional sheet may be added if necessary to conform with said requirements.

(a) Corner location: Township 32 North

Range 7 East

South Quarter corner  
of Section 12



Section: 12

Town Schley

County Lincoln

b) (f) (g) (h) Description of monument found at this corner and if it was accepted, state all evidence (material, testimonial, occupational, plats, records, other monuments) used as a basis for accepting. If not accepted or if nothing was found, state evidence used as basis for establishing location. If reestablished through lost corner proportionate methods, indicate all monuments, distances and directions used to establish.

The original corner was established in 1851 by James E. Marsh. In 1980, Scheridan D. Schwark, S-1205, found 7" x 7" red granite monument up approximately 1' above grade. Schwark measured to 4 bearing trees. In 1980, surveyor Lester Schmidt shows this stone on a subdivision named "Praire Lakes".  
06/13/97 D. Tlusty, D. Williams found 7" x 7" granite stone with chiseled "X" on top. Accepted stone as found (in good condition) as the best evidence of the perpetuated corner location. Set ties and measured as shown below.

FILED AT LINCOLN COUNTY

COUSE THIS 25th DAY

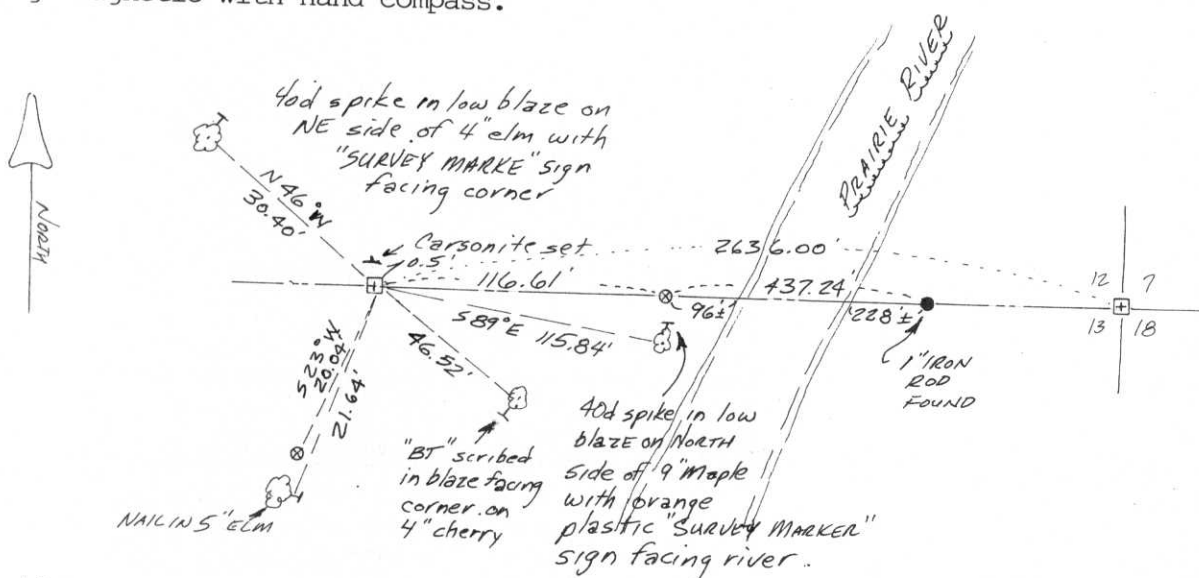
March 19, 99

Pat Prule

INFORMATION OFFICE

c) (d) (e) Plan view of corner with ties to at least 4 witness monuments. If in disagreement with previously established corner, show the distances between the two corners and also indicate the ties to the disputed corner.

- ☉ = bearing tree as described
  - ⊗ = 3/4" x 30" re-bar set
- Bearings magnetic with hand compass.



(i) I, David E. Tlusty, Registered Land Surveyor S-1390  
(type or print name) certify that the corner location on this record was determined by me or under my direction and control and that this U.S. Public Land Survey Monument Record is correct and complete to the best of my knowledge and belief.



Signature David E. Tlusty

Date 3/24/99

Index No. I-23





11 12:37 PM



WATER 11

5  
M  
A  
R  
K  
E  
R  
5

11 12:42 PM