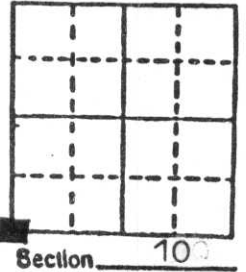


# U.S. PUBLIC LAND SURVEY MONUMENT RECORD

**Note:** This form is intended and designed to fulfill all requirements of Wisconsin Administrative Code, Chapter A-E 5.02, U.S. Public Land Survey Monument Record (3) (a) (b) (c) (d) (e) (f) (g) (h) (i). An additional sheet may be added if necessary to conform with said requirements.

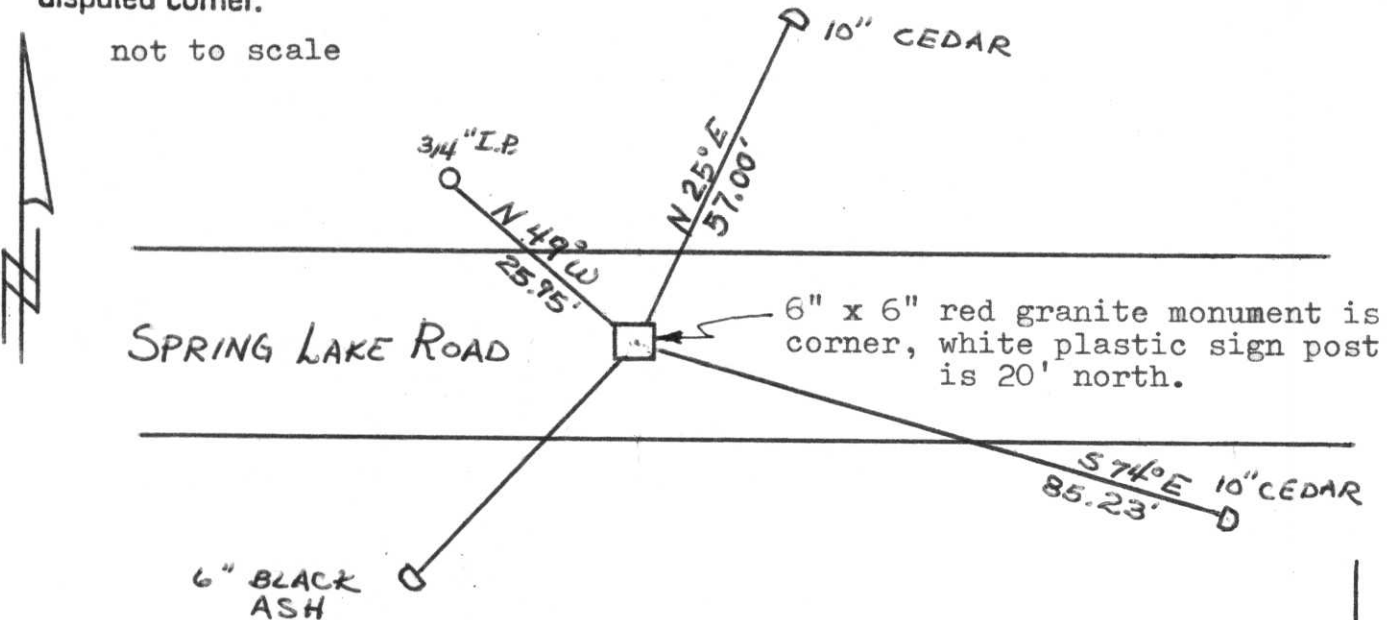
(a) Corner location: Township 32 North  
 Range 7 East

Town Schley  
 County Lincoln



b) (f) (g) (h) Description of monument found at this corner and if it was accepted, state all evidence (material, testimonial, occupational, plats, records, other monuments) used as a basis for accepting. If not accepted or if nothing was found, state evidence used as basis for establishing location. If reestablished through lost corner proportionate methods, indicate all monuments, distances and directions used to establish. Original Gov't. Survey: April 1852 by A.G. & F.S. Ellis, set wood post for corner with bearings, cedar 8 N 30 E 8 links and black ash 8 S 50 W 3 links. During a resurvey by Francis Fox in the 1930's, he set a red granite monument for the corner. I found the 6" x 6" red granite monument 30" below the surface of Spring Lake Road in the centre-line of said road. I set a 1/2" diameter rebar, 16 1/2" long over the centre of the corner to help reference its location and referenced the corner as shown below.

c) (d) (e) Plan view of corner with ties to at least 4 witness monuments. If in disagreement with previously established corner, show the distances between the two corners and also indicate the ties to the disputed corner.



(i) I, Lester J. Schmit R.L.S. 1192  
 (type or print name) certify that the corner location on this record was determined by me or under my direction and control and that this U.S. Public Land Survey Monument Record is correct and complete to the best of my knowledge and belief.

Lester J. Schmit 7 Jun 91  
 Signature Date



Index No. I-13

RECEIVED JUN 18 1991