

Attachment to Tie Sheet I-11, T32N, R7E

43207090020

I visited the corner on 7/25/2018 to verify the corner and reference tie monumentation. I found the MAG Nail set by Riverside Land Surveying for CSM #2530 and all 4 ties from David Renaud (REI) tie sheet (11/29/2002). The established Coordinates and all 4 ties agree with existing monument.

Anthony R. Dallman 7/26/18

Anthony R. Dallman, PLS-2405

Lincoln County Surveyor



U.S. PUBLIC LAND SURVEY MONUMENT RECORD

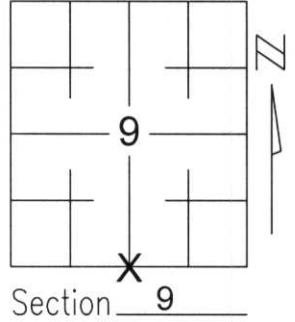
Note: This form is intended and designed to fulfill all requirements of Wisconsin Administrative Code, Chapter A-E 5.02, U.S. Public Land Survey Monument Record (3)(a)(b)(c)(d)(e)(f)(g)(h)(i). An additional sheet may be added if necessary to conform with said requirements.

(a) Corner location: Township 32 North

Range 7 East

Town/City/Village MERRILL

County LINCOLN



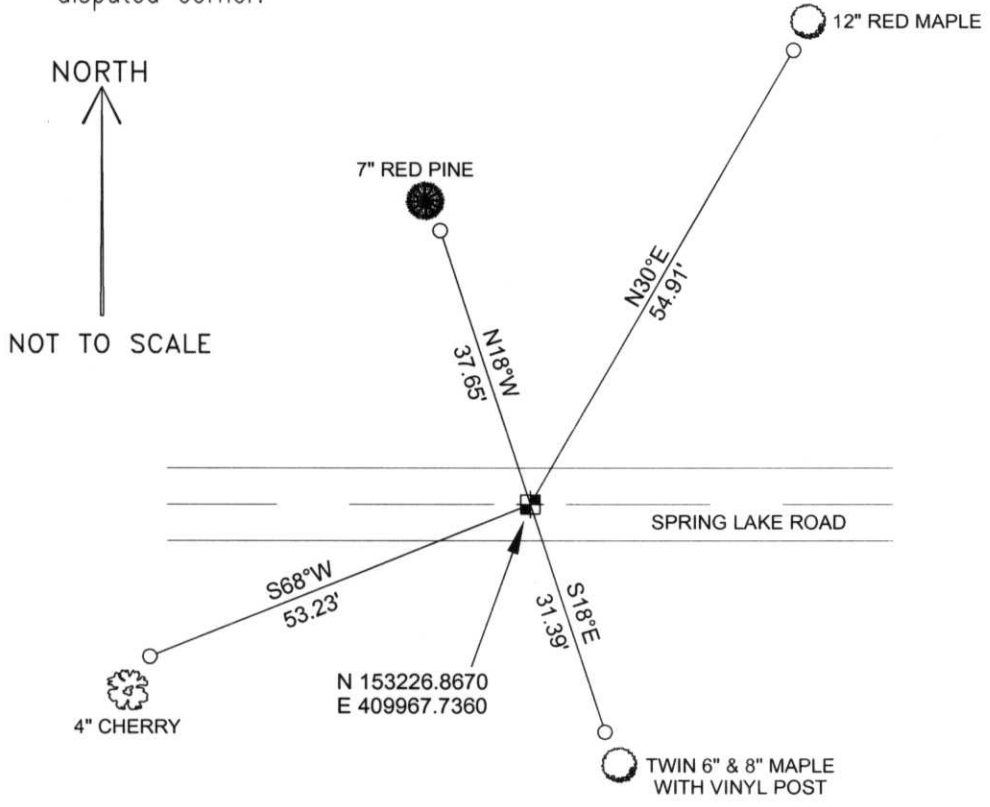
Section 9

(b)(f)(g)(h) Description of monument found at this corner and if it was accepted, state all evidence (material, testimonial, occupational, plats, records, other monuments) used as a basis for accepting. If not accepted or if nothing was found, state evidence used as basis for establishing location. If reestablished through lost corner proportionate methods, indicate all monuments, distances and directions used to establish.

TALKED WITH ADJOINING LAND OWNERS. CORNER WAS PREVIOUSLY SEARCHED FOR BY OTHER SURVEYORS. LAND OWNERS STATED THE HILL ON WHICH THE CORNER FALLS WAS CUT DOWN AND HAD FILL BROUGHT IN. PRORATED CORNER IN PER FOX'S NOTES. DUG 2' X 3' HOLD 4' DEEP. HOLE WAS ALL SAND FILL. SET LINCOLN COUNTY MONUMENT W/ ALUM CAP AT PRORATED DISTANCES ON CENTER LINE OF SPRING LAKE ROAD.

LINCOLN COUNTY
COURTHOUSE THIS 3RD DAY
OF December 20 02
Tony Deller
LAND INFORMATION OFFICE

(c)(d)(e) Plan view of corner with ties to at least 4 witness monuments. If in disagreement with previously established corner, show the distances between the two corners and also indicate the ties to the disputed corner.

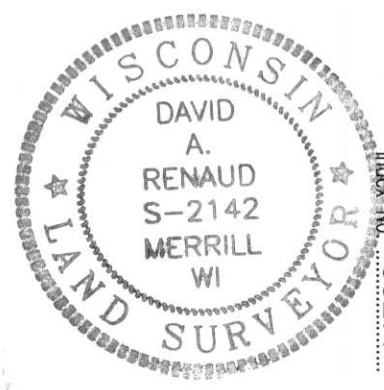


COORDINATES ARE REFERENCED TO THE LINCOLN COUNTY COORDINATE SYSTEM AS DEVELOPED BY THE WISCONSIN DEPARTMENT OF TRANSPORTATION AND WERE DETERMINED BY GPS OBSERVATIONS ON CONTROL POINTS AS SUPPLIED BY LINCOLN COUNTY.

BEARINGS ARE REFERENCED TO MAGNETIC NORTH.

- - SET 3/4" x 30" REBAR W/ ALUM CAP 1' FROM BEARING TREE
- ⊠ - SOUTH 1/4 CORNER SET LINCOLN COUNTY MONUMENT W/ ALUM CAP

N 153226.8670
E 409967.7360



(i) I, David A. Renaud, RLS certify that the corner location on this record was determined by me or under my direction and control and that this U.S. Public Land Survey Monument Record is correct and complete to the best of my knowledge and belief.

David Renaud 11-29-02
Signature Date

I-11

93277

