

# U.S. PUBLIC LAND SURVEY MONUMENT RECORD

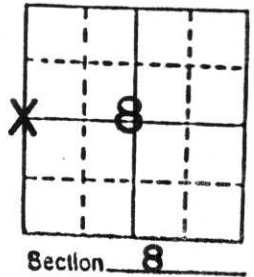
**Note:** This form is intended and designed to fulfill all requirements of Wisconsin Administrative Code, Chapter A-E 5.02, U.S. Public Land Survey Monument Record (3) (a) (b) (c) (d) (e) (f) (g) (h) (i). An additional sheet may be added if necessary to conform with said requirements.

(a) Corner location: Township 32 North

Range 7 East

Town MERRILL

County LINCOLN

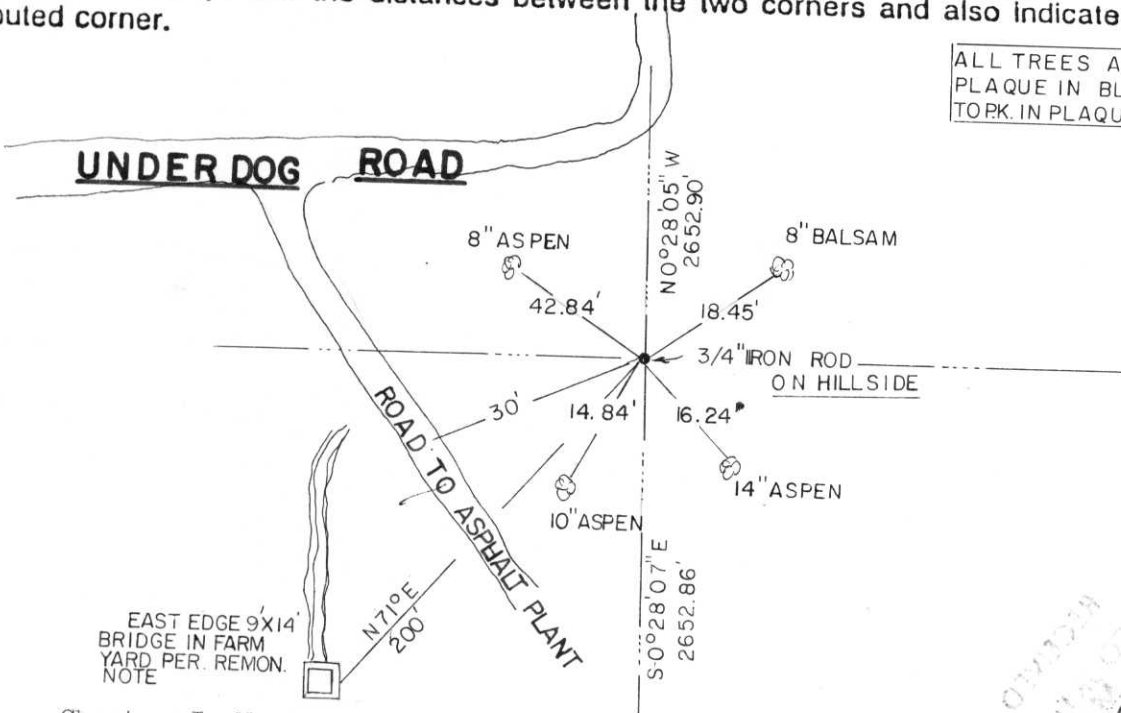


Section 8

b) (f) (g) (h) Description of monument found at this corner and if it was accepted, state all evidence (material, testimonial, occupational, plats, records, other monuments) used as a basis for accepting. If not accepted or if nothing was found, state evidence used as basis for establishing location. If reestablished through lost corner proportionate methods, indicate all monuments, distances and directions used to establish.

A traverse was run from the SW corner of Section 8 to the W $\frac{1}{2}$  corner and NW corner of Section 5 and was then compared with the notes of Frances Fox. This comparison and an existing tie to a concrete bridge was used to determine the corners location.

c) (d) (e) Plan view of corner with ties to at least 4 witness monuments. If in disagreement with previously established corner, show the distances between the two corners and also indicate the ties to the disputed corner.

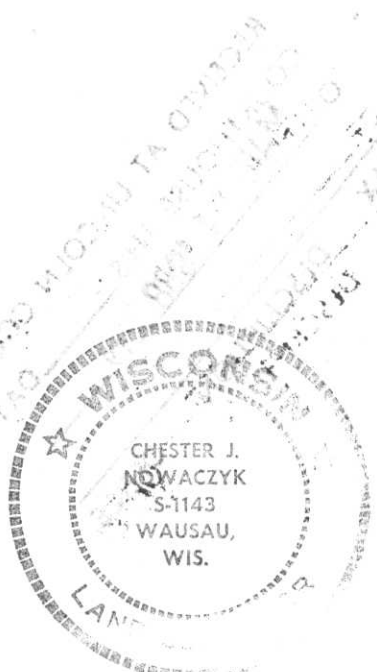


ALL TREES ARE BLAZED WITH PLAQUE IN BLAZE MEASUREMENT TOPK. IN PLAQUE

EAST EDGE 9X14 BRIDGE IN FARM YARD. PER. REMON. NOTE

(i) I, Chester J. Nowaczyk RLS NO.1143  
 (type or print name) certify that the corner location on this record was determined by me or under my direction and control and that this U.S. Public Land Survey Monument Record is correct and complete to the best of my knowledge and belief.

Chester J. Nowaczyk 3-9-88  
 Signature Date



Index No. G-5

# U.S. PUBLIC LAND SURVEY MONUMENT RECORD

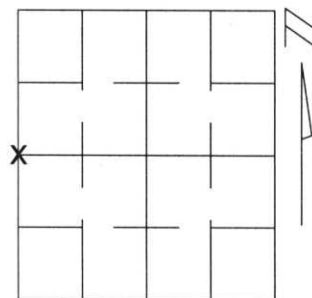
Note: This form is intended and designed to fulfill all requirements of Wisconsin Administrative Code, Chapter A-E 5.02, U.S. Public Land Survey Monument Record (3)(a)(b)(c)(d)(e)(f)(g)(h)(i). An additional sheet may be added if necessary to conform with said requirements.

(a) Corner location: Township 32 North

Range 7 East

Town/City/Village MERRILL

County LINCOLN



Section 8

(b)(f)(g)(h) Description of monument found at this corner and if it was accepted, state all evidence (material, testimonial, occupational, plats, records, other monuments) used as a basis for accepting. If not accepted or if nothing was found, state evidence used as basis for establishing location. If reestablished through lost corner proportionate methods, indicate all monuments, distances and directions used to establish.

In measuring to this corner I found that one tie remained. I then retied this corner and perpetuated it as shown below.

(c)(d)(e) Plan view of corner with ties to at least 4 witness monuments. If in disagreement with previously established corner, show the distances between the two corners and also indicate the ties to the disputed corner.

## WEST 1/4 CORNER SECTION 8

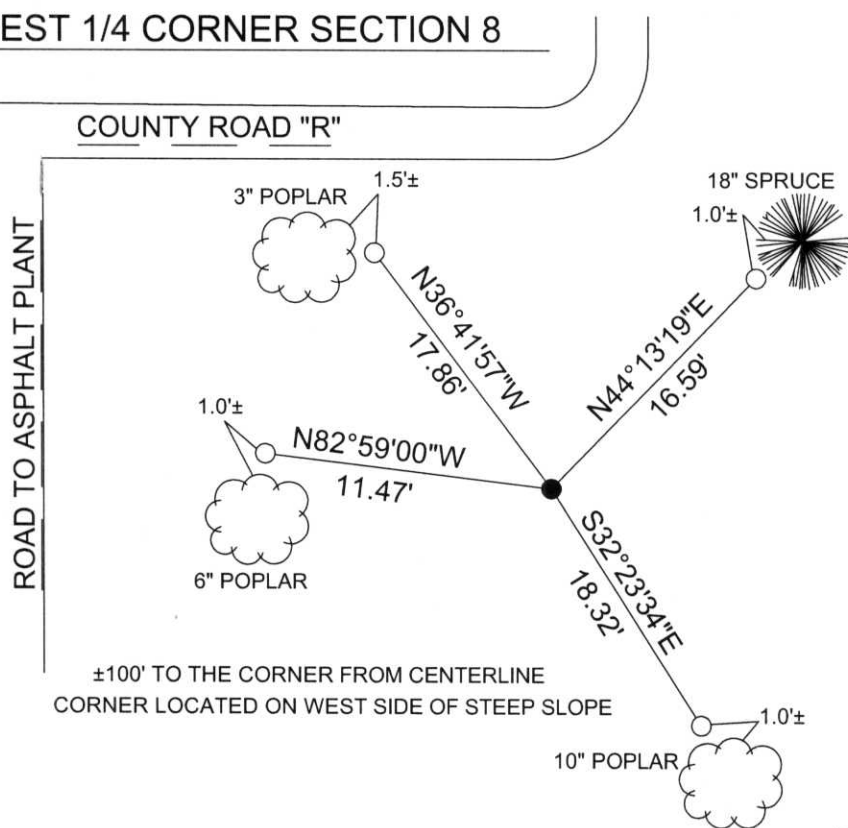
NORTH

RECEIVED AT LINCOLN COUNTY  
 COURTHOUSE THIS 26<sup>TH</sup> DAY  
 OF December 20 03  
*Tony Wall*  
 LAND INFORMATION OFFICE

NOT TO SCALE

- — FOUND BAR
- — SET 1"X18" PIPE

NOTE  
 ALL BEARINGS SHOWN ARE REFERENCED TO LINCOLN COUNTY COORDINATE SYSTEM.  
 ALL TIES MEASURED ELECTRONICALLY WITH TOTAL STATION.



±100' TO THE CORNER FROM CENTERLINE  
 CORNER LOCATED ON WEST SIDE OF STEEP SLOPE

(i) I, Kyle R. Fischer  
 (type or print name) certify that the corner location on this record was determined by me or under my direction and control and that this U.S. Public Land Survey Monument Record is correct and complete to the best of my knowledge and belief.

Signature Kyle R Fischer Date 12-11-03



Index No. G-5



11 11:26 AM



11 11:26 AM



11 11:27 AM