

# U.S. PUBLIC LAND SURVEY MONUMENT RECORD

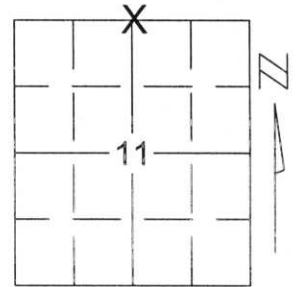
Note: This form is intended and designed to fulfill all requirements of Wisconsin Administrative Code, Chapter A-E 5.02, U.S. Public Land Survey Monument Record (3)(a)(b)(c)(d)(e)(f)(g)(h)(i). An additional sheet may be added if necessary to conform with said requirements.

(a) Corner location: Township 32 North

Range 7 East

Town/City/Village SCHLEY

County LINCOLN



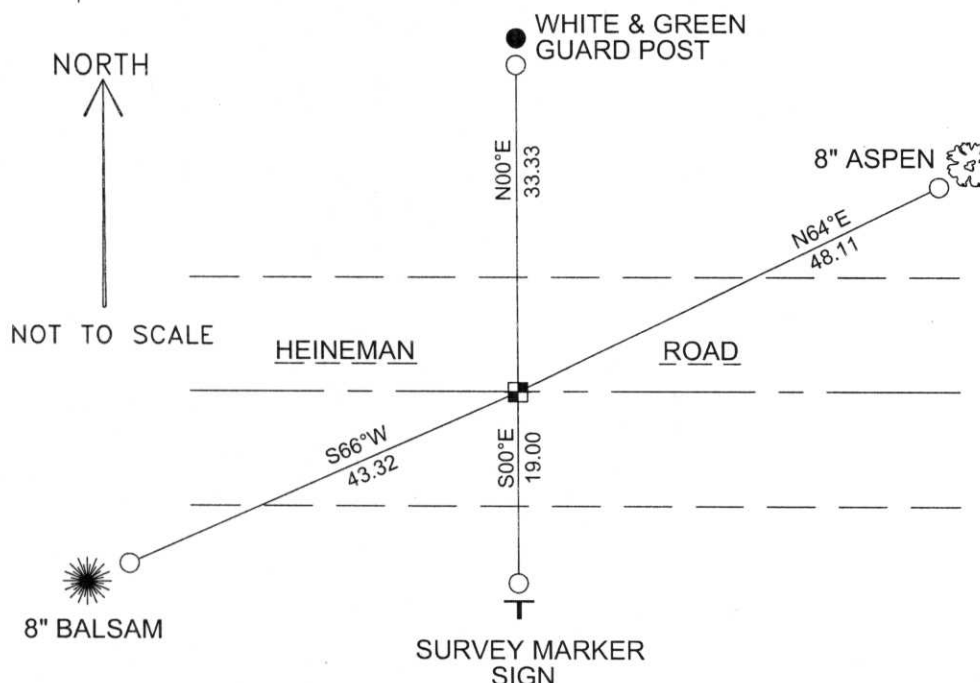
Section 11

(b)(f)(g)(h) Description of monument found at this corner and if it was accepted, state all evidence (material, testimonial, occupational, plats, records, other monuments) used as a basis for accepting. If not accepted or if nothing was found, state evidence used as basis for establishing location. If reestablished through lost corner proportionate methods, indicate all monuments, distances and directions used to establish.

SEARCHED FOR CORNER, FOUND 6" X 6" GRANITE STONE WITH 3/4" IRON PIPE ON ITS NORTH SIDE, ALSO FOUND GREEN AND WHITE WOOD POST STANDING IN NORTH DITCH. ACCEPTED STONE AS CORNER AND TIED OUT TO PERPETUATE CORNER LOCATION.

RECEIVED BY LINCOLN COUNTY  
SURVEYOR THIS 16<sup>TH</sup> DAY  
OF September 20 04  
Tony Dalke  
COUNTY SURVEYOR

(c)(d)(e) Plan view of corner with ties to at least 4 witness monuments. If in disagreement with previously established corner, show the distances between the two corners and also indicate the ties to the disputed corner.

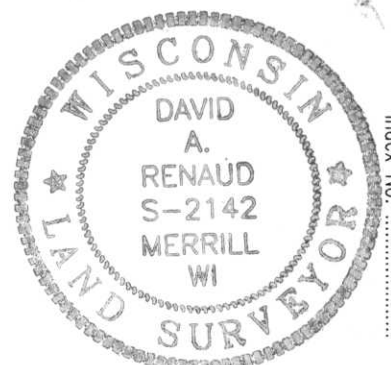


COORDINATES ARE REFERENCED TO THE LINCOLN COUNTY COORDINATE SYSTEM AS DEVELOPED BY THE WISCONSIN DEPARTMENT OF TRANSPORTATION AND WERE DETERMINED BY GPS OBSERVATIONS ON CONTROL POINTS AS SUPPLIED BY LINCOLN COUNTY.

BEARINGS ARE REFERENCED TO MAGNETIC NORTH.

N - 158556.402  
E - 420548.573

- - SET 3/4" x 30" REBAR W/ ALUM CAP
- - NORTH 1/4 CORNER FOUND 6 x 6 GRANITE STONE




Index No. 113272

(i) I, David A. Renaud, RLS S-2142, certify that the corner location on this record was determined by me or under my direction and control and that this U.S. Public Land Survey Monument Record is correct and complete to the best of my knowledge and belief.

David Renaud      9-15-04  
Signature                      Date

E-19

An aerial photograph of an archaeological excavation site. A rectangular pit has been dug into the ground, revealing a layer of brown soil. A wooden marker is placed horizontally across the top edge of the pit. To the right of the pit, a metal shovel is partially visible. The surrounding ground is a mix of light-colored sand and darker soil. In the top left and top right corners, there are red and black objects, possibly parts of equipment or markers.

113272 N/4 11-32-76