

# U.S. PUBLIC LAND SURVEY MONUMENT RECORD

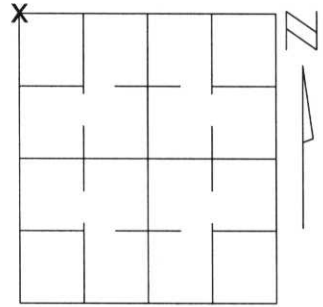
Note: This form is intended and designed to fulfill all requirements of Wisconsin Administrative Code, Chapter A-E 5.02, U.S. Public Land Survey Monument Record (3)(a)(b)(c)(d)(e)(f)(g)(h)(i). An additional sheet may be added if necessary to conform with said requirements.

(a) Corner location: Township 32 North

Range 7 East

Town/City/Village MERRILL

County LINCOLN



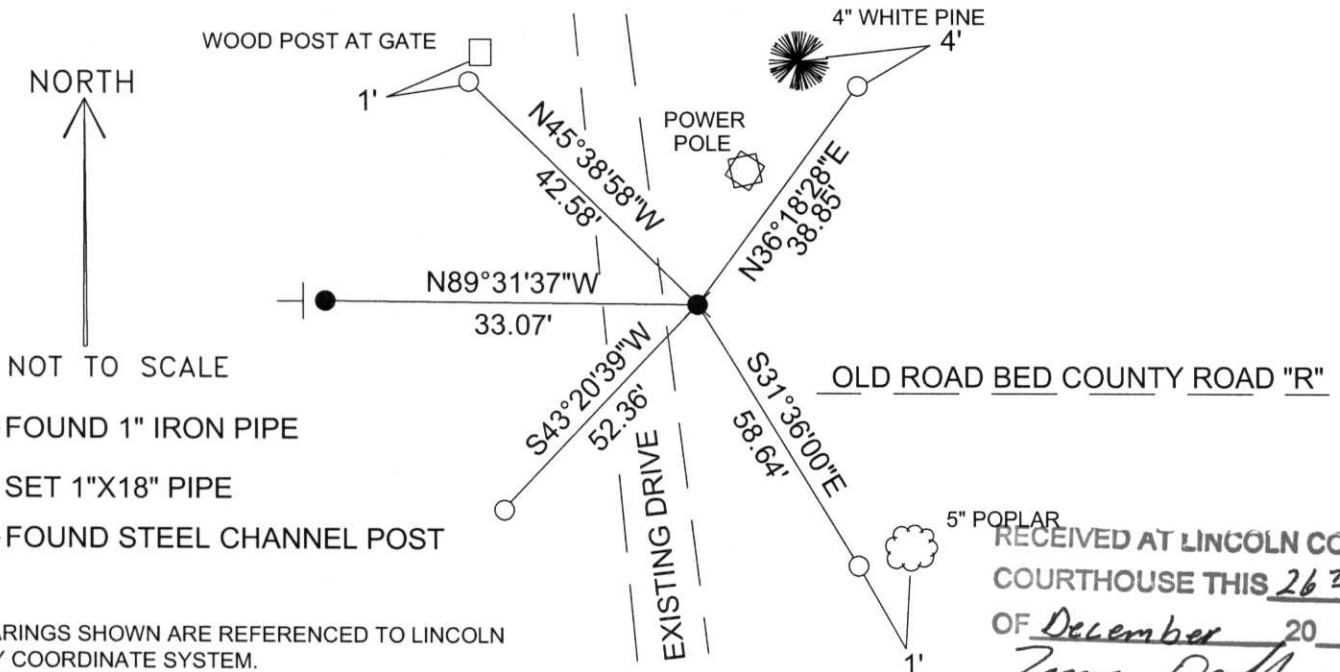
Section 8

(b)(f)(g)(h) Description of monument found at this corner and if it was accepted, state all evidence (material, testimonial, occupational, plats, records, other monuments) used as a basis for accepting. If not accepted or if nothing was found, state evidence used as basis for establishing location. If reestablished through lost corner proportionate methods, indicate all monuments, distances and directions used to establish.

In measuring to this corner I found that two ties remained. The tie to a 12" maple was unusable and the pipe to the West was in good shape. I then retied this corner and perpetuated it as shown below.

(c)(d)(e) Plan view of corner with ties to at least 4 witness monuments. If in disagreement with previously established corner, show the distances between the two corners and also indicate the ties to the disputed corner.

### NORTHWEST CORNER SECTION 8



- — FOUND 1" IRON PIPE
- — SET 1"X18" PIPE
- — FOUND STEEL CHANNEL POST

NOTE  
ALL BEARINGS SHOWN ARE REFERENCED TO LINCOLN COUNTY COORDINATE SYSTEM.  
ALL TIES MEASURED ELECTRONICALLY WITH TOTAL STATION.

RECEIVED AT LINCOLN COUNTY COURTHOUSE THIS 26<sup>TH</sup> DAY OF December 20 03  
*Jerry Dahl*  
LAND INFORMATION OFFICE

(i) I, Kyle R. Fischer  
(type or print name) certify that the corner location on this record was determined by me or under my direction and control and that this U.S. Public Land Survey Monument Record is correct and complete to the best of my knowledge and belief.

Signature Kyle R. Fischer Date 12-11-03



Index No. E-5

# U.S. PUBLIC LAND SURVEY MONUMENT RECORD

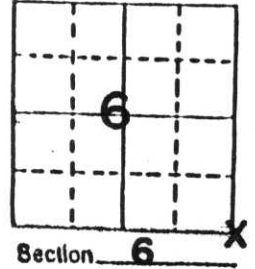
**Note:** This form is intended and designed to fulfill all requirements of Wisconsin Administrative Code, Chapter A-E 5.02, U.S. Public Land Survey Monument Record (3) (a) (b) (c) (d) (e) (f) (g) (h) (i). An additional sheet may be added if necessary to conform with said requirements.

(a) Corner location: Township 32 North

Range 7 East

Town MERRILL

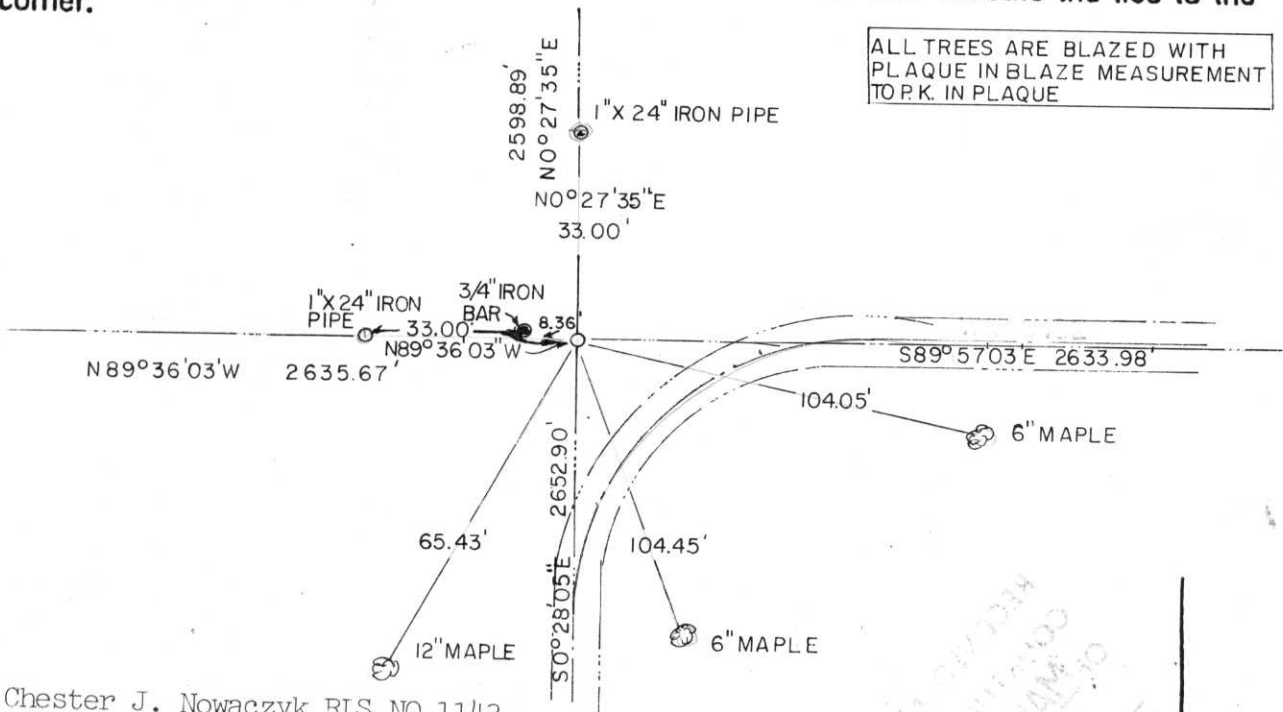
County LINCOLN



b) (f) (g) (h) Description of monument found at this corner and if it was accepted, state all evidence (material, testimonial, occupational, plats, records, other monuments) used as a basis for accepting. If not accepted or if nothing was found, state evidence used as basis for establishing location. If reestablished through lost corner proportionate methods, indicate all monuments, distances and directions used to establish.

A extensive traverse was run from the NE and E $\frac{1}{4}$  corners of Section 6 to the N $\frac{1}{4}$ , NE, W $\frac{1}{4}$ , and SW corners of Section 8 and was compared with the notes of Frances Fox to determine the corners location.

c) (d) (e) Plan view of corner with ties to at least 4 witness monuments. If in disagreement with previously established corner, show the distances between the two corners and also indicate the ties to the disputed corner.



ALL TREES ARE BLAZED WITH PLAQUE IN BLAZE MEASUREMENT TO P.K. IN PLAQUE

(i) I, Chester J. Nowaczyk RLS NO.1143  
 (Type or print name) certify that the corner location on this record was determined by me or under my direction and control and that this U.S. Public Land Survey Monument Record is correct and complete to the best of my knowledge and belief.

Chester J. Nowaczyk 3-9-88  
 Signature Date



Index No. E-5



12 2:53 PM





12 3:04 PM



SIERRA HEIGHTS

PRIVATE  
DRIVE

12 2:53 PM