

# U.S. PUBLIC LAND SURVEY MONUMENT RECORD

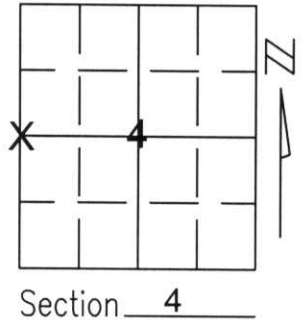
Note: This form is intended and designed to fulfill all requirements of Wisconsin Administrative Code, Chapter A-E 5.02, U.S. Public Land Survey Monument Record (3)(a)(b)(c)(d)(e)(f)(g)(h)(i). An additional sheet may be added if necessary to conform with said requirements.

(a) Corner location: Township 32 North

Range 7 East

Town/City/Village MERRILL

County LINCOLN



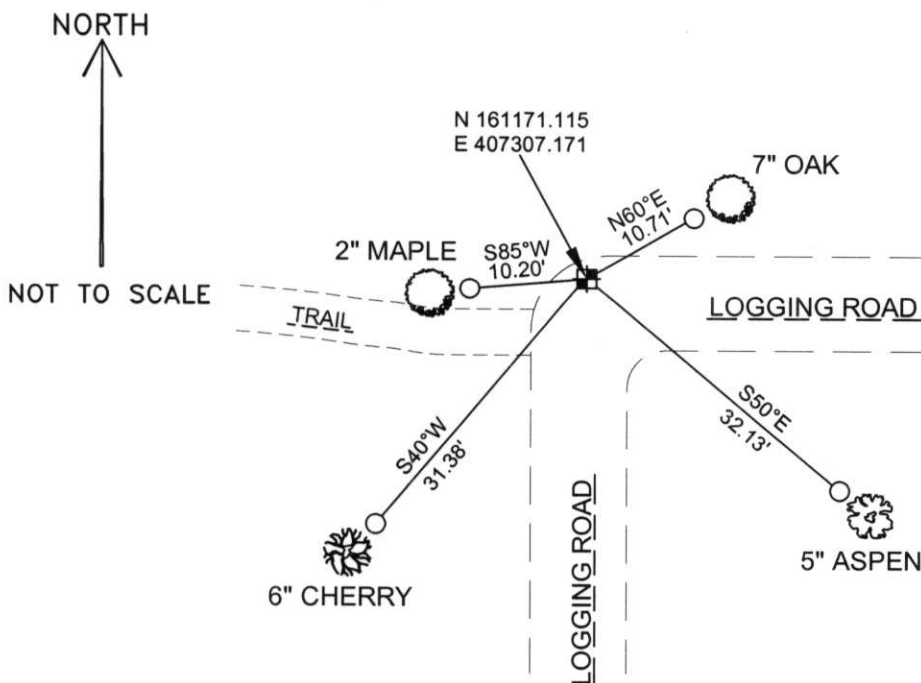
Section 4

(b)(f)(g)(h) Description of monument found at this corner and if it was accepted, state all evidence (material, testimonial, occupational, plats, records, other monuments) used as a basis for accepting. If not accepted or if nothing was found, state evidence used as basis for establishing location. If reestablished through lost corner proportionate methods, indicate all monuments, distances and directions used to establish.

I DUG AT THE INTERSECTION OF THE CENTERLINES OF TWO LOGGING ROADS AND FOUND A 6" X 6" SCRIBED GRANITE STONE. THE STONE FIT MEASURE TO NEARBY CORNERS, SO I ACCEPTED THE STONE AS THE BEST EVIDENCE OF THE CORNER'S ORIGINAL LOCATION. I SET TIES AS SHOWN BELOW TO PERPETUATE THE CORNER'S LOCATION.

RECEIVED AT LINCOLN COUNTY  
COURTHOUSE THIS 3RD DAY  
OF December 20 02  
Tommy Duhon  
LAND INFORMATION OFFICE

(c)(d)(e) Plan view of corner with ties to at least 4 witness monuments. If in disagreement with previously established corner, show the distances between the two corners and also indicate the ties to the disputed corner.



COORDINATES ARE REFERENCED TO THE LINCOLN COUNTY COORDINATE SYSTEM AS DEVELOPED BY THE WISCONSIN DEPARTMENT OF TRANSPORTATION AND WERE DETERMINED BY GPS OBSERVATIONS ON CONTROL POINTS AS SUPPLIED BY LINCOLN COUNTY.

BEARINGS ARE REFERENCED TO MAGNETIC NORTH.

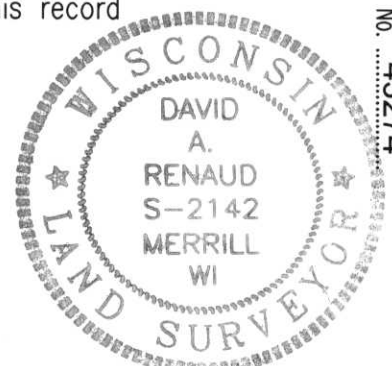
- - SET 3/4" x 30" REBAR W/ ALUM CAP 1' FROM BEARING TREE
- ⊠ - WEST 1/4 CORNER FOUND 6" x 6" GRANITE STONE

(i) I, David A. Renaud, RLS S-2142, certify that the corner location on this record was determined by me or under my direction and control and that this U.S. Public Land Survey Monument Record is correct and complete to the best of my knowledge and belief.

Signature


Date

David A. Renaud 11-29-02



Index No. 43274

C-9

A photograph showing a white plastic marker or stake stuck into the ground. The marker is white and has the number "43224" written on it in black ink. The marker is positioned vertically, with the top part visible above the snow. The ground is covered in snow, and there are some brown leaves and twigs scattered around. The background is a snowy field with some sparse vegetation. The number "43224" is written vertically on the marker.

43224