

# LINCOLN COUNTY U.S. PUBLIC LAND SURVEY MONUMENT LOCATION RECORD

SECTION 5  
TOWNSHIP 31N  
RANGE 6E

**A-5**  
NO.

LANDMARK       BENCHMARK \_\_\_\_\_

FOUND   
SET   
RESET   
RE-TIED

CORNER IDENTITY: 8"x8" GRANITE STONE MONUMENT

SCOTT  
CITY, VILLAGE, TOWN

LINCOLN COUNTY COORDINATE: N: \_\_\_\_\_

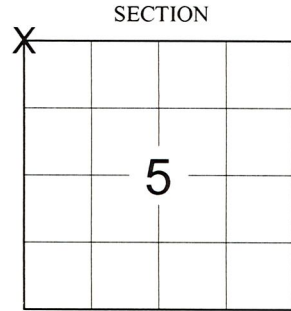
E: \_\_\_\_\_

ELEVATION-(FEET): \_\_\_\_\_ DATUM: \_\_\_\_\_

WEATHER: OVERCAST

DATE OF SURVEY: 11/18/21 TEMPERATURE: 40 °F

SURVEY PARTY: SAM HAUGEN & COLLIN MARQUARDT



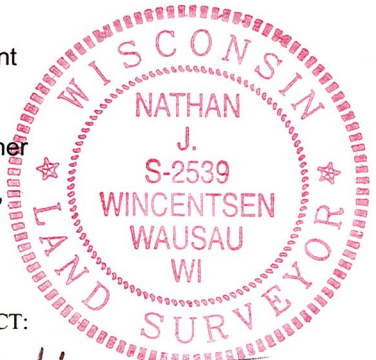
LOCATION  
(Indicated By X)



**BASIS FOR MONUMENT LOCATION:**  
(DESCRIBE METHOD OF SURVEY AND CORNER AUTHENTICATION)

9/16/1980 - D. Tlusty & S. Ulrich visited this corner location, found 8"x8" square granite monument 2.0' out of ground at fence corner.

11/18/2021 - We visited this corner and found 8"x8" granite stone laying flat on ground. Land owner to East said stone was knocked out when trail was plowed during winter of 2020-2021. No ties remained, reset stone at position provided by public county coordinates with top of stone being 1' above ground. Set 4 (four) new ties to perpetuate the corner location as shown below. Set metal T-post and new vinyl post along West and South sides of stone.



CERTIFIED CORRECT:

*Nathan J. Wincentsen*

NATHAN J. WINCENTSEN S-2539  
Professional Land Surveyor

DATE: 1-26-22

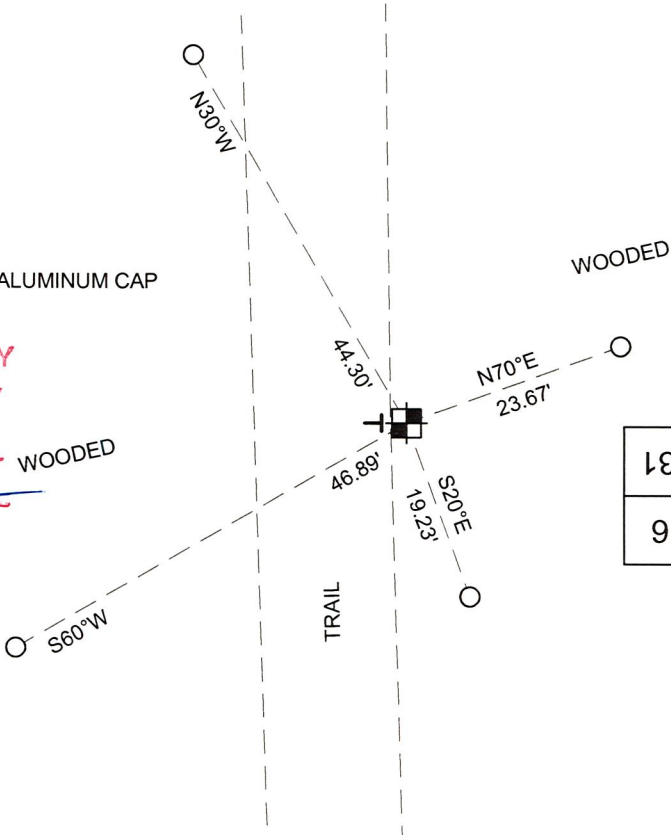
FIELD BOOK NO. NA PAGE NO. NA

COMPANY RIVERSIDE LAND SURVEYING LLC

**TIE SKETCH:**

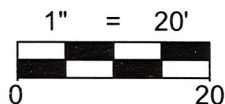
- 8"x8" GRANITE STONE MONUMENT
- SET 7/8"x30" REBAR WITH 2-1/2" O.D. ALUMINUM CAP
- SET VINYL "T" POST

RECEIVED BY LINCOLN COUNTY  
SURVEYOR THIS 27<sup>TH</sup> DAY  
OF January 20 22  
*Tony Dahl*  
COUNTY SURVEYOR



13	32
9	5

TOP OF STONE  
SCRIBED AND  
PLACED AS SHOWN



BEARINGS WERE ESTABLISHED FROM A  
MAGNETIC HAND HELD COMPASS READING.

**A-5**  
NO.  
4-5

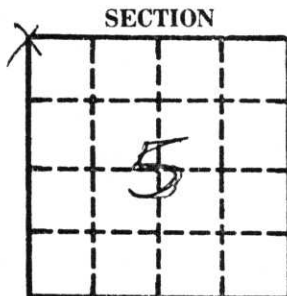
**MINK CAPITAL SURVEYING, INC.**  
**SURVEY MONUMENT LOCATION RECORD**

SECTION 5  
 TOWNSHIP 31  
 RANGE 6E  
LINCOLN  
 [CITY, VILLAGE, COUNTY]

LANDMARK     BENCHMARK

FOUND   
 SET   
 RE-SET   
 RE-TIED

CORNER IDENTITY NORTHWEST CORNER SEC 5  
 DATE OF SURVEY SEPT 16, 1980  
 WEATHER PTLY CLDY WINDY  
 TEMPERATURE 65°  
 SURVEY PARTY D. TLUSTY S. ULRICH



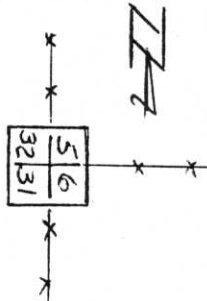
SECTION  
 LOCATION [INDICATED BY X]



**BASIS FOR MONUMENT LOCATION**

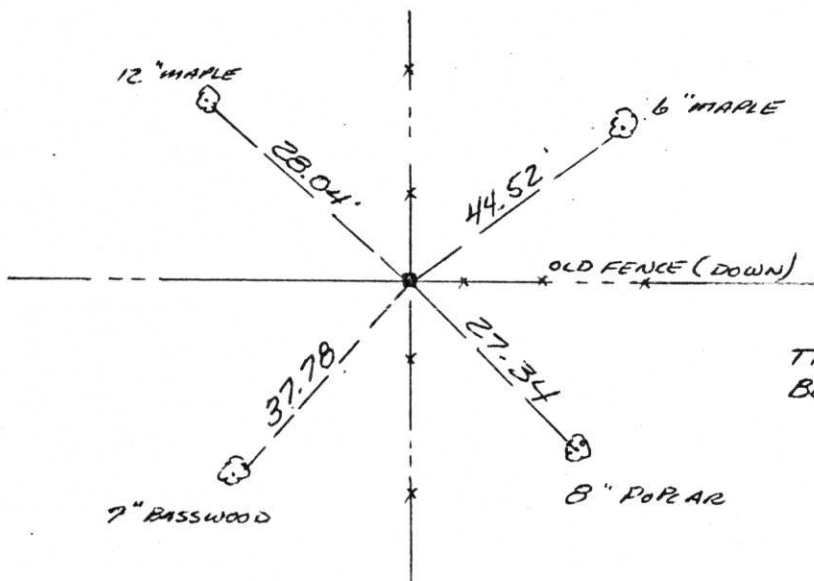
DESCRIBE METHOD OF SURVEY AND CORNER AUTHENTICATION

*Found 8" x 8" SQUARE GRANITE MONUMENT 2.0' OUT OF GROUND AT FENCE CORNER. ~~THE~~ MONUMENT SCRIBED AS SHOWN BELOW*



**TIE SKETCH**

SHOW HORIZONTAL TIE DISTANCES TO FIXED WITNESS MONUMENTS. DESCRIBE ALL MONUMENTS FOUND OR SET.



TIED TO NAILS +  
 BOTTLECAPS IN BLAZES

RECEIVED AT THE COUNTY  
 COURTHOUSE  
 OF  
 TAX

A-5