

# U.S. PUBLIC LAND SURVEY MONUMENT RECORD

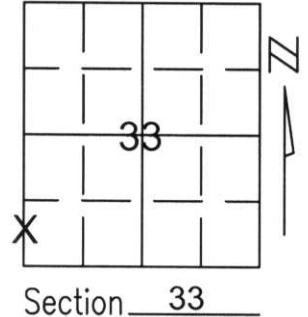
Note: This form is intended and designed to fulfill all requirements of Wisconsin Administrative Code, Chapter A-E 5.02, U.S. Public Land Survey Monument Record (3)(a)(b)(c)(d)(e)(f)(g)(h)(i). An additional sheet may be added if necessary to conform with said requirements.

(a) Corner location: Township 32 North

Range 6 East

Town/City/Village MERRILL

County LINCOLN

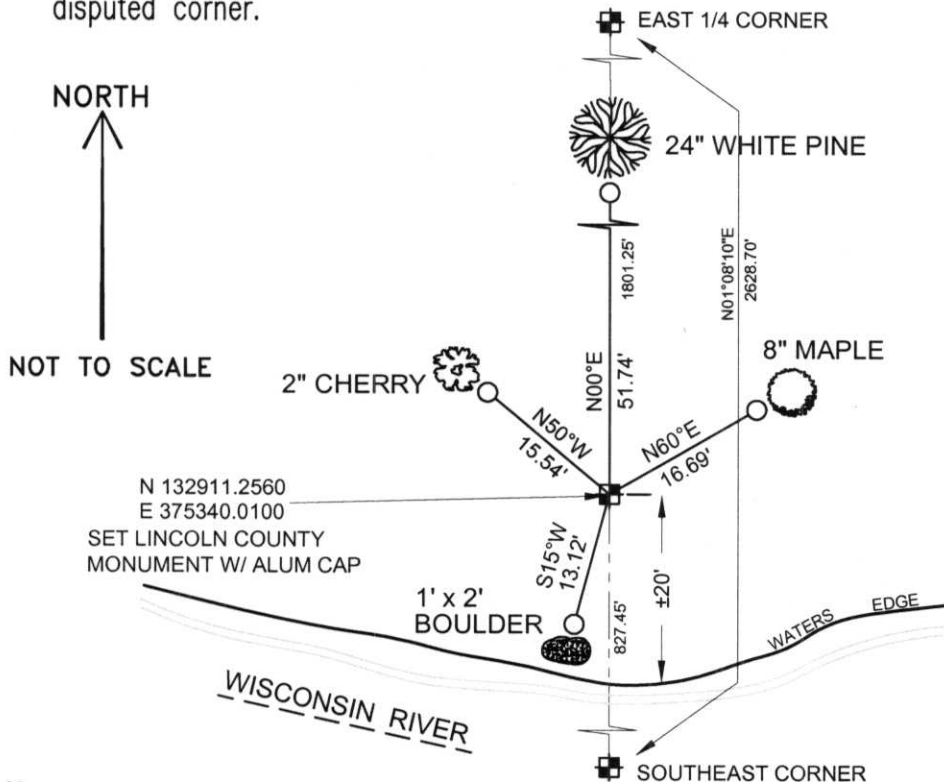


Section 33

(b)(f)(g)(h) Description of monument found at this corner and if it was accepted, state all evidence (material, testimonial, occupational, plats, records, other monuments) used as a basis for accepting. If not accepted or if nothing was found, state evidence used as basis for establishing location. If reestablished through lost corner proportionate methods, indicate all monuments, distances and directions used to establish.

THE SOUTHWEST CORNER OF SECTION 33 FALLS IN THE WISCONSIN RIVER. I HELD THE SOUTH 1/4 CORNER OF SECTION 33 AND A WITNESS MONUMENT FOR THE 1/6TH CORNER EAST OF THIS CORNER FOR THE SOUTH LINE OF. IT MISSED THE MONUMENT SET ONSHORE EAST OF THIS CORNER, BUT THE MONUMENT IS LEANING. I HELD THE WEST 1/4 CORNER OF SECTION 33 AND FOUND A 3/4" REBAR ON NORTH SHORE OF THE RIVER. THE LINE BETWEEN THEM FIT FOUND IRONS ALONG THE WEST LINE OF THE SOUTHWEST 1/4. I SET A BERNSTEN MONUMENT FOR THE NORTH MEANDER CORNER OF THE SOUTHWEST CORNER OF SECTION 33 AND SET TIES AS SHOWN BELOW TO PERPETUATE THE CORNER'S LOCATION.

(c)(d)(e) Plan view of corner with ties to at least 4 witness monuments. If in disagreement with previously established corner, show the distances between the two corners and also indicate the ties to the disputed corner.



COORDINATES ARE REFERENCED TO THE LINCOLN COUNTY COORDINATE SYSTEM AS DEVELOPED BY THE WISCONSIN DEPARTMENT OF TRANSPORTATION AND WERE DETERMINED BY GPS OBSERVATIONS ON CONTROL POINTS AS SUPPLIED BY LINCOLN COUNTY.

BEARINGS ARE REFERENCED TO MAGNETIC NORTH.

- - SECTION CORNER
- - SET 3/4" x 30" REBAR W/ ALUM CAP 1' FROM BEARING TREE

RECEIVED AT LINCOLN COUNTY COURTHOUSE THIS 3<sup>RD</sup> DAY OF December 20 02  
*Tommy Dallen*  
 LAND INFORMATION OFFICE

(i) I, David A. Renaud, RLS S-2142, certify that the corner location on this record was determined by me or under my direction and control and that this U.S. Public Land Survey Monument Record is correct and complete to the best of my knowledge and belief.

*David A. Renaud* 11-29-02  
 Signature Date



Index No. ...3232620

X, P-9

101 3232620

3232620

