

# U.S. PUBLIC LAND SURVEY MONUMENT RECORD

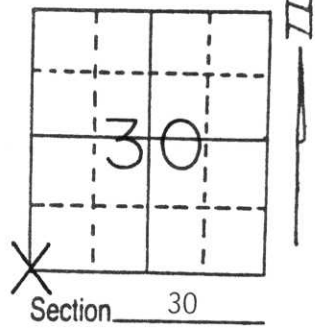
Note: This form is intended and designed to fulfill all requirements of Wisconsin Administrative Code, Chapter A-E 5.02, U.S. Public Land Survey Monument Record (3) (a) (b) (c) (d) (e) (f) (g) (h) (i). An additional sheet may be added if necessary to conform with said requirements.

(a) Corner location: Township 32 North

Range 7 East

Town/City/Village MERRILL

County LINCOLN



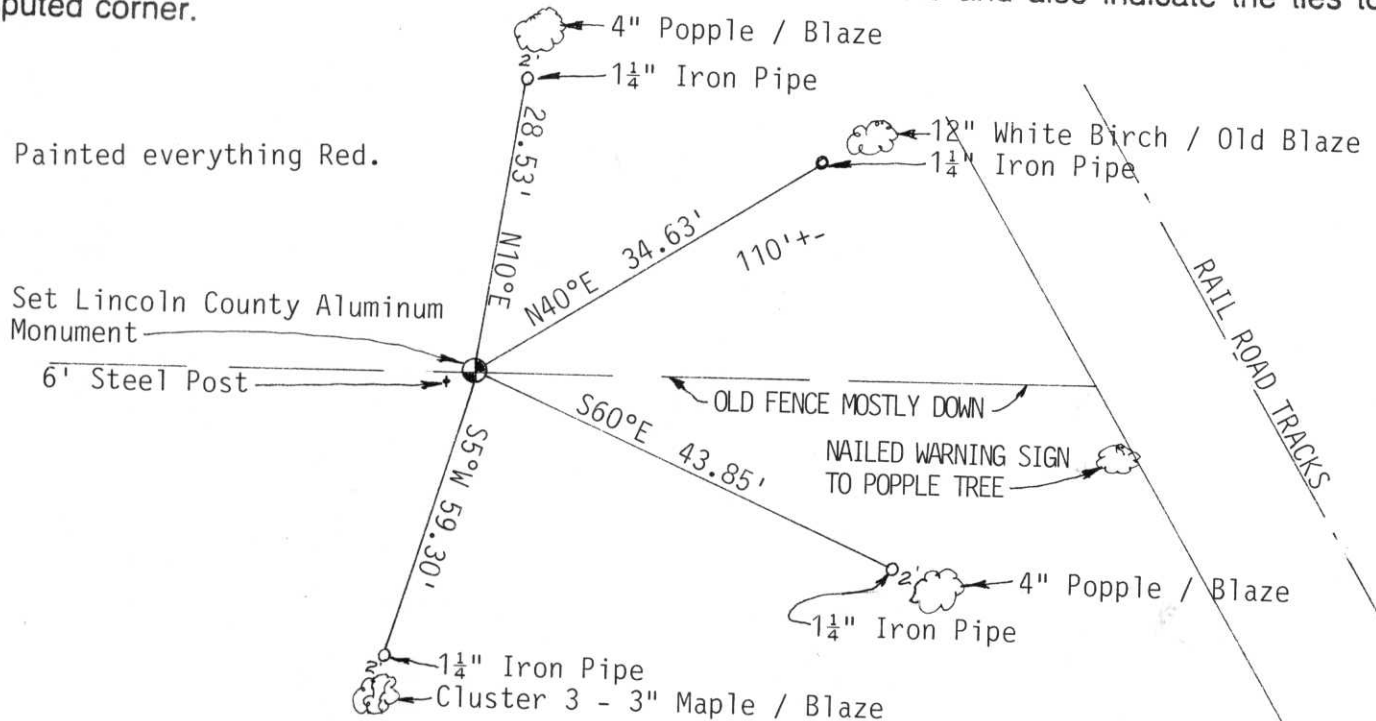
(b) (f) (g) (h) Description of monument found at this corner and if it was accepted, state all evidence (material, testimonial, occupational, plats, records, other monuments) used as a basis for accepting. If not accepted or if nothing was found, state evidence used as basis for establishing location. If reestablished through lost corner proportionate methods, indicate all monuments, distances and directions used to establish.

Corner originally found by Mink Capital, 1-6-75. I traversed to this corner in fall of 1988. Found existing 1" Square Iron Bar, scribed on four sides with Section Numbers. On 10-11-94, I traversed to corner again, found same 1" Square Iron Bar, scribed on four sides, with ribbon hanging above it, on old East - West fence line. Removed Bar, (only 18" long) and set Lincoln County Aluminum Monument. Stamped cap. Set 4, 1 1/4" Iron Pipe as witness corners. Set Warning sign, 6, high, by corner. Nailed red warning sign in popple tree by Rail Road Tracks. Painted all ties red.

Originalities were gone, or in bad condition.

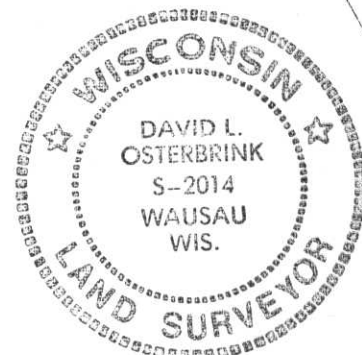
Mid State Associates, Devon Vanden Heuvel, RLS, C.S.M. Vol. 3, Pg. 307, calls for an existing Berntsen Monument here. We searched the area, found no Berntsen Monument. Held existing Bar as Corner.

(c) (d) (e) Plan view of corner with ties to at least 4 witness monuments. If in disagreement with previously established corner, show the distances between the two corners and also indicate the ties to the disputed corner.



(i) I, David L. Osterbrink, RLS No. S-2014  
 (type or print name) certify that the corner location on this record was determined by me or under my direction and control and that this U.S. Public Land Survey Monument Record is correct and complete to the best of my knowledge and belief.

David L. Osterbrink 10-18-94  
 Signature Date



Index No. C-1

MI  
SU

SURVEY IN  
AT LOCAL

SECTION

COMMISSION 32  
BLK 6E  
LINCOLN CTY

LANDMARK  BENCHMARK

FOUND

30'

45'

60'

CORNER IDENTIFY SE COR

DATE OF SURVEY 1-6-75

WEATHER

TEMPERATURE 35°

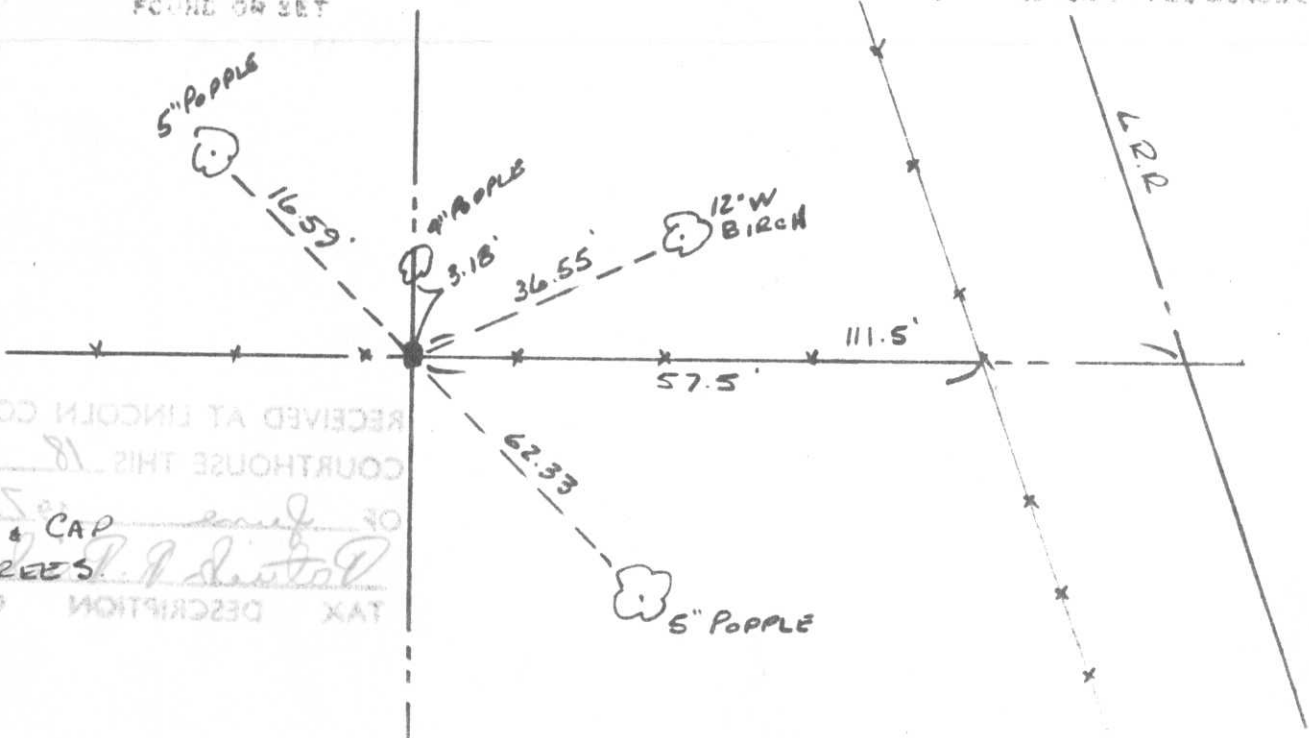
SURVEY PARTY D.T. & D.M.



BASIS FOR MONUMENT LOCATION

DESCRIBE METHOD OF SURVEY AND CORNER AUTHENTICATION

TIE SKETCH SHOW HORIZONTAL TIE DISTANCES TO FIELD WITNESS MONUMENTS. DESCRIBE ALL MONUMENTS FOUND ON SET



RECEIVED AT LINCOLN COUNTY  
COURTHOUSE THIS 18 DAY  
OF 75  
NAIL & CAP  
IN TREES  
TAX DESCRIPTION OFFICE

Index No. 0-25



2002 8 7



2002 8 7



2002 8 7