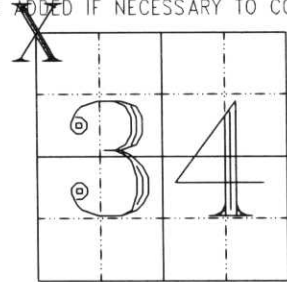


U.S. PUBLIC LAND SURVEY MONUMENT RECORD

NOTE: THIS FORM IS INTENDED AND DESIGNED TO FULFILL ALL REQUIREMENTS OF WISCONSIN ADMINISTRATIVE CODE, CHAPTER A-E 7.08 U.S. PUBLIC LAND SURVEY MONUMENT RECORD (3) (a) (b) (c) (d) (e) (f) (g) (h) (i). AN ADDITIONAL SHEET MAY BE ADDED IF NECESSARY TO CONFORM WITH SAID REQUIREMENTS.

(a) CORNER LOCATION: TOWNSHIP 32 NORTH
 RANGE 6 EAST/~~WEST~~
 TOWN/~~CITY/VILLAGE~~ MERRILL
 COUNTY LINCOLN



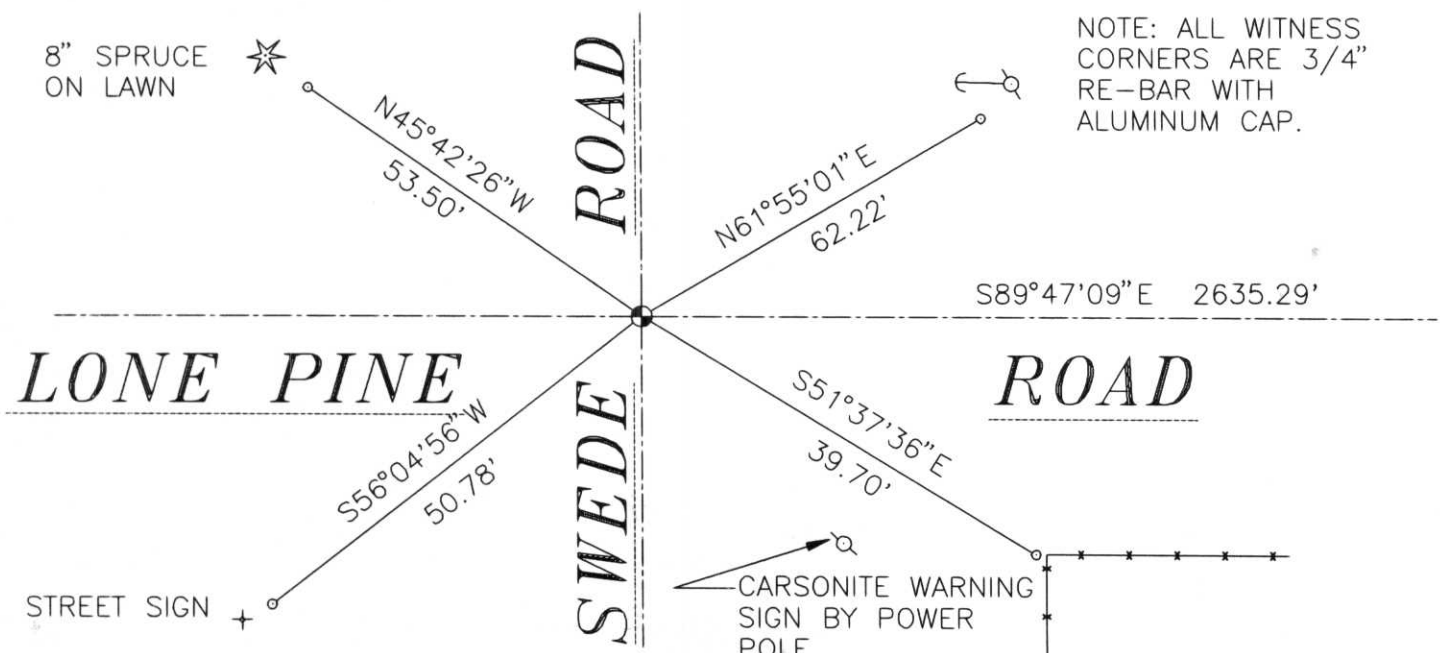
SECTION 34

(b) (f) (g) (h) DESCRIPTION OF MONUMENT FOUND AT THIS CORNER AND IF IT WAS ACCEPTED, STATE ALL EVIDENCE (MATERIAL, TESTIMONIAL, OCCUPATIONAL, PLATS, RECORDS, OTHER MONUMENTS) USED AS BASIS FOR ACCEPTING. IF NOT ACCEPTED OR IF NOTHING WAS FOUND, STATE EVIDENCE USED AS BASIS FOR ESTABLISHING LOCATION. IF REESTABLISHED THROUGH LOST CORNER PROPORTIONATE METHODS, INDICATE ALL MONUMENTS, DISTANCES AND DIRECTIONS USED TO ESTABLISH. INDICATE TYPE OF MONUMENT FOUND OR SET AND SIGN POST.

DUG IN BLACKTOP ROAD WITH CASE 880 BACKHOE. WENT THROUGH 8" BLACKTOP, 8" GRANITE. DUG DOWN TO UNDISTURBED SOIL. FOUND NO EVIDENCE OF ANY CORNER MONUMENT. HELD ROAD INTERSECTION AS BEST EVIDENCE OF CORNER. MEASURED 1/2 MILE NORTH AND SOUTH, 40 FENCES ALSO. DISTANCES WERE VERY GOOD FOR CORNER LOCATION. STAMPED LINCOLN COUNTY BERNTSEN MONUMENT, SET.

**RECEIVED AT LINCOLN COUNTY
 COURTHOUSE THIS 26th DAY
 OF Nov 19 96
Pat Pribe
TAX DESCRIPTION OFFICE**

(c) (d) (e) PLAN VIEW OF CORNER WITH TIES TO AT LEAST 4 WITNESS MONUMENTS. IF IN DISAGREEMENT WITH PREVIOUSLY ESTABLISHED CORNER, SHOW THE DISTANCES BETWEEN THE TWO CORNERS AND ALSO INDICATE THE TIES TO THE DISPUTED CORNER.



(i) I, DAVID L. OSTERBRINK RLS.
 (TYPE OR PRINT NAME) CERTIFY THAT THE CORNER LOCATION ON THIS RECORD WAS DETERMINED BY ME OR UNDER MY DIRECTION AND CONTROL AND THAT THIS U.S. PUBLIC LAND SURVEY MONUMENT RECORD IS CORRECT AND COMPLETE TO THE BEST OF MY KNOWLEDGE AND BELIEF.

David L. Osterbrink
 SIGNATURE

11-16-96
 DATE



INDEX NO. U-13



2002 7 30



2002 7 30



2002 7 30



2002 7 30



2002 7 30