

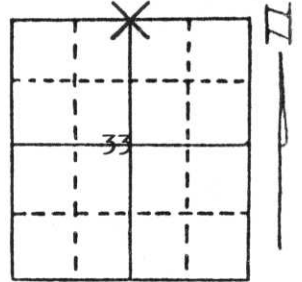
U.S. PUBLIC LAND SURVEY MONUMENT RECORD

Note: This form is intended and designed to fulfill all requirements of Wisconsin Administrative Code, Chapter A-E 5.02, U.S. Public Land Survey Monument Record (3) (a) (b) (c) (d) (e) (f) (g) (h) (i). An additional sheet may be added if necessary to conform with said requirements.

(a) Corner location: Township 32 North
 Range 6 East

Town/City/Village Town of Merrill

County Lincoln



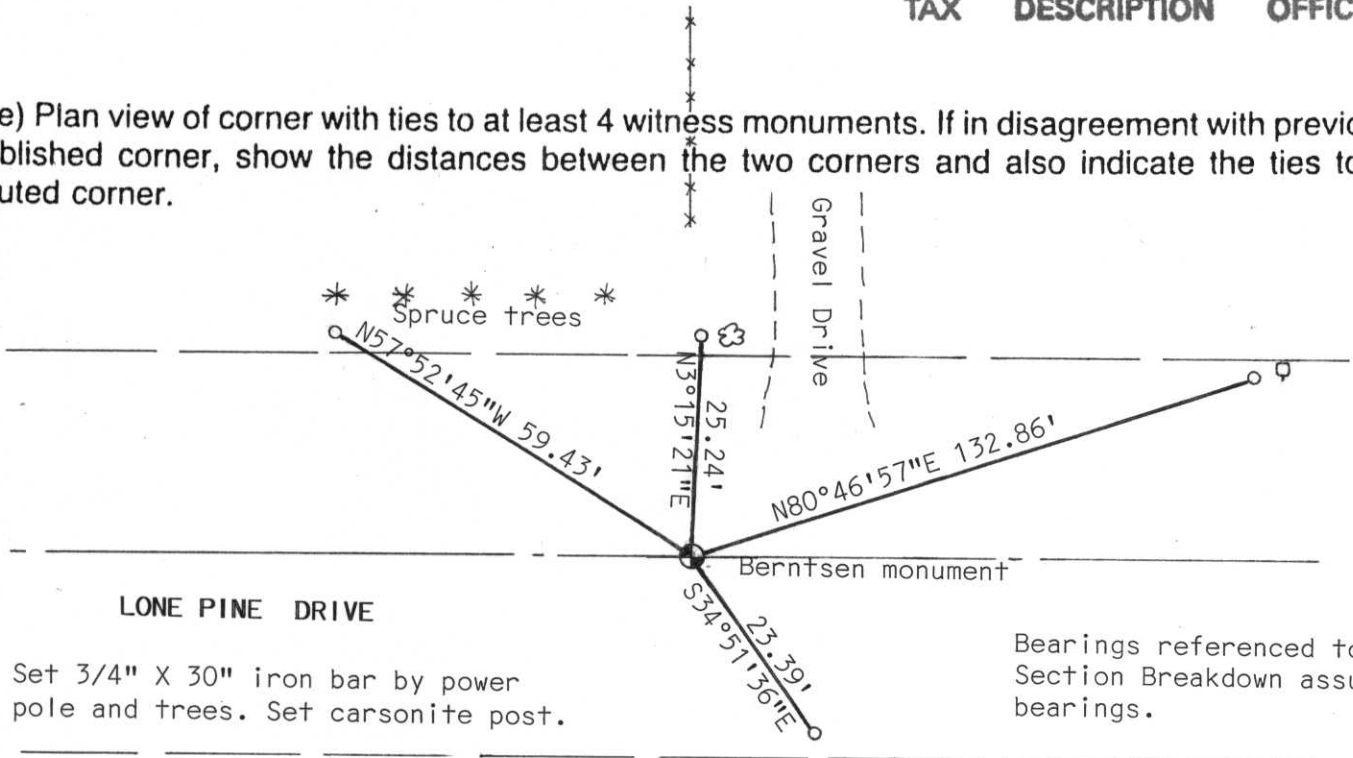
Section 33

(b) (f) (g) (h) Description of monument found at this corner and if it was accepted, state all evidence (material, testimonial, occupational, plats, records, other monuments) used as a basis for accepting. If not accepted or if nothing was found, state evidence used as basis for establishing location. If reestablished through lost corner proportionate methods, indicate all monuments, distances and directions used to establish.

Dug with backhoe at measured corner location. We found no evidence of Section corner. Set Lincoln co. Berntsen monument. Tied monument into traverse of Section corner fit well. Found fence line to north on line but found no other evidence to indicate corner location. Corner was set by single proportionate measurement on fence line and centerline of Lone Pine Drive.

**RECEIVED AT LINCOLN COUNTY
 COURTHOUSE THIS 9th DAY
 OF July 1997
Pat Priddy
 TAX DESCRIPTION OFFICE**

(c) (d) (e) Plan view of corner with ties to at least 4 witness monuments. If in disagreement with previously established corner, show the distances between the two corners and also indicate the ties to the disputed corner.



Bearings referenced to Section Breakdown assumed bearings.

(i) I, Edwin R. Abendroth RLS No. S-798
 (type or print name) certify that the corner location on this record was determined by me or under my direction and control and that this U.S. Public Land Survey Monument Record is correct and complete to the best of my knowledge and belief.

Edwin R. Abendroth July 7, 1997
 Signature Date



Index No. 0-11



2002 7 30



2002 7 30



2002 7 30