

# U.S. PUBLIC LAND SURVEY MONUMENT RECORD

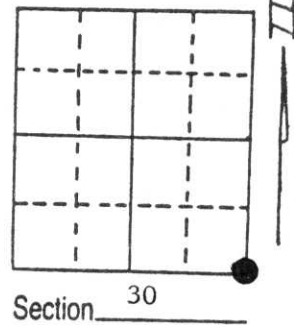
Note: This form is intended and designed to fulfill all requirements of Wisconsin Administrative Code, Chapter A-E 5.02, U.S. Public Land Survey Monument Record (3) (a) (b) (c) (d) (e) (f) (g) (h) (i). An additional sheet may be added if necessary to conform with said requirements.

(a) Corner location: Township 32 North

Range 6 East

Town/City/Village Tn of Merrill

County Lincoln



(b) (f) (g) (h) Description of monument found at this corner and if it was accepted, state all evidence (material, testimonial, occupational, plats, records, other monuments) used as a basis for accepting. If not accepted or if nothing was found, state evidence used as basis for establishing location. If reestablished through lost corner proportionate methods, indicate all monuments, distances and directions used to establish.

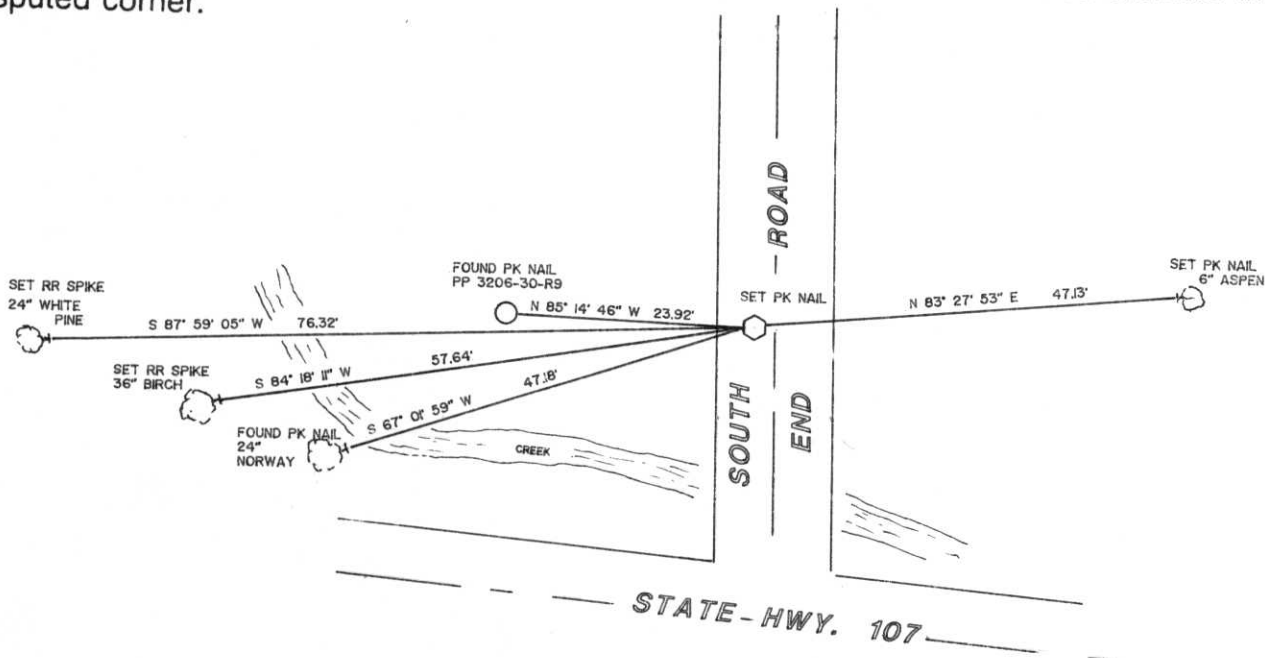
The intersection of South End Road and Hwy. 107 was rebuilt and the corner removed during the construction process.

Certified Survey No. 242 was tied to this corner. Upon recovering the monuments of C.S.M. 242 I reset the corner in the position shown on that map.

A local resident, Harold Badeau, to the immediate area for over 50 years confirmed the position of the corner.

Harold M. Badeau 9/22/94

(c) (d) (e) Plan view of corner with ties to at least 4 witness monuments. If in disagreement with previously established corner, show the distances between the two corners and also indicate the ties to the disputed corner.



(i) I, DAVID L. LEMKE S-1845  
 (type or print name) certify that the corner location on this record was determined by me or under my direction and control and that this U.S. Public Land Survey Monument Record is correct and complete to the best of my knowledge and belief.

David L. Lemke

Signature \_\_\_\_\_ Date SEP. 20 1994



Index No. U-5