

Attachment to Tie Sheet S-25, T32N, R6E

43206252000

I visited the corner on 10/10/2023 to verify the corner and reference tie monumentation. I found a Berntsen Monument, flush with ground, and all 4 of LaVerne Mosher's ties(8/02/1991). 3 of the 4 ties check well, the Northeast tie is leaning.

Anthony R. Dallman 02/16/24

Anthony R. Dallman, PLS-2405

Lincoln County Surveyor



43206252000_Mon-N



43206252000_North



PLEASE
DO NOT
DISTURB
NEARBY
SURVEYOR
IF THE LOCATION
OF THIS MARKER
IS DISAPPOINTED
PLEASE CONTACT
COUNTY
SURVEYORS
OFFICE

Trimble

TSC3

43206252000_West



43206252000_South



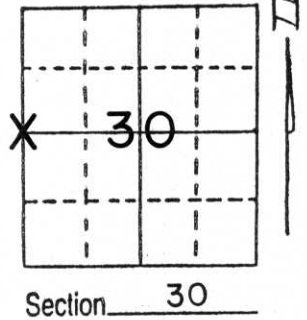
43206252000_East



U.S. PUBLIC LAND SURVEY MONUMENT RECORD

Note: This form is intended and designed to fulfill all requirements of Wisconsin Administrative Code, Chapter A-E 5.02, U.S. Public Land Survey Monument Record (3) (a) (b) (c) (d) (e) (f) (g) (h) (i). An additional sheet may be added if necessary to conform with said requirements.

(a) Corner location: Township 32 North
 Range 7 East/West
 Town/City/Village MERRILL
 County LINCOLN

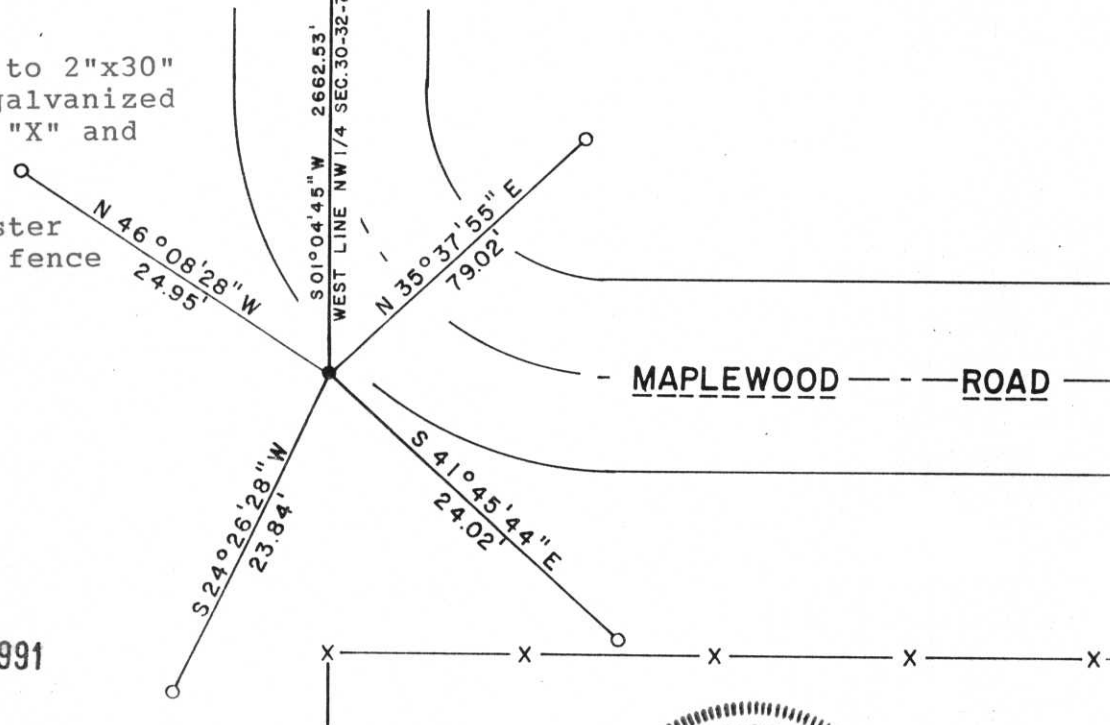


(b) (f) (g) (h) Description of monument found at this corner and if it was accepted, state all evidence (material, testimonial, occupational, plats, records, other monuments) used as a basis for accepting. If not accepted or if nothing was found, state evidence used as basis for establishing location. If reestablished through lost corner proportionate methods, indicate all monuments, distances and directions used to establish.

Recovered intact a 1" round iron bar at road centerline P.I. This monument had been found by William Scherer, R.L.S., on June 23, 1970. We measured to Northwest corner of Section 30, locating fence line at North line, Southwest $\frac{1}{4}$, Northwest $\frac{1}{4}$. This forty fence was determined to be at split between opposing government corners. Accepted 1" rod as best evidence of corner location. Replaced 1" rod with Lincoln County aluminum Berntsen monument.

(c) (d) (e) Plan view of corner with ties to at least 4 witness monuments. If in disagreement with previously established corner, show the distances between the two corners and also indicate the ties to the disputed corner.

NOTE: All ties are to 2"x30" iron pipes with galvanized caps with chisel "X" and stamped "W.C.". Each pipe marked with location poster mounted on metal fence post.



RECEIVED AUG 26 1991

(i) I, LaVerne H. Mosher
 (type or print name) certify that the corner location on this record was determined by me or under my direction and control and that this U.S. Public Land Survey Monument Record is correct and complete to the best of my knowledge and belief.

LaVerne H. Mosher
 Signature

AUGUST 2, 1991
 Date



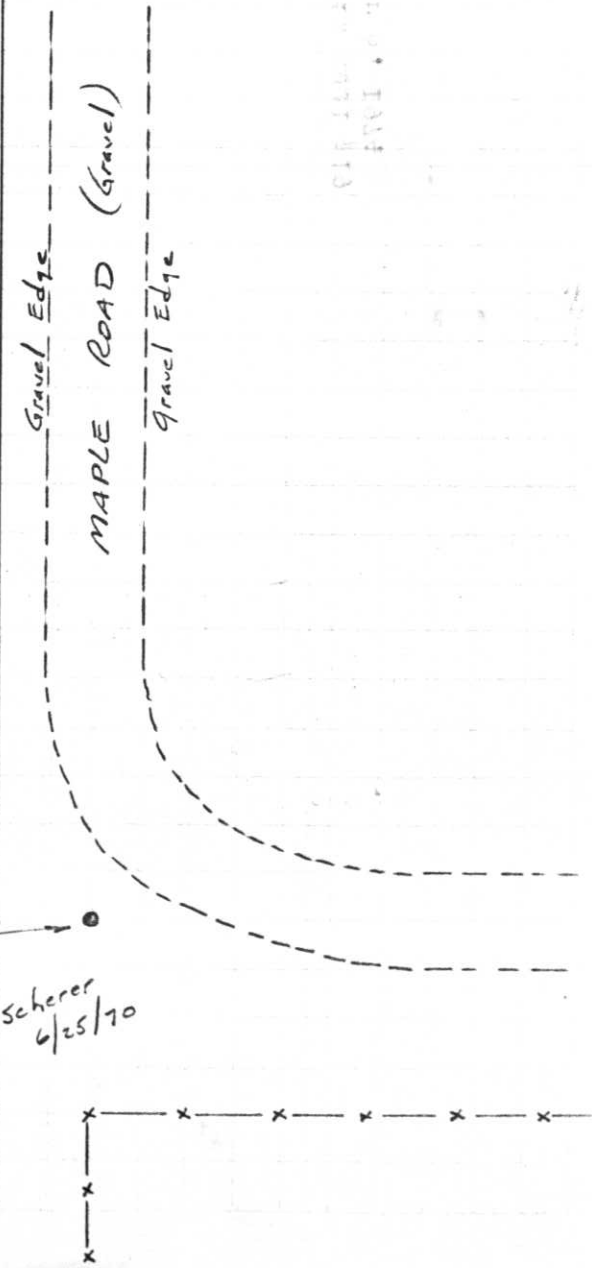
Index No. S-1

T 32 N.

R 7 E

June 25, 1970

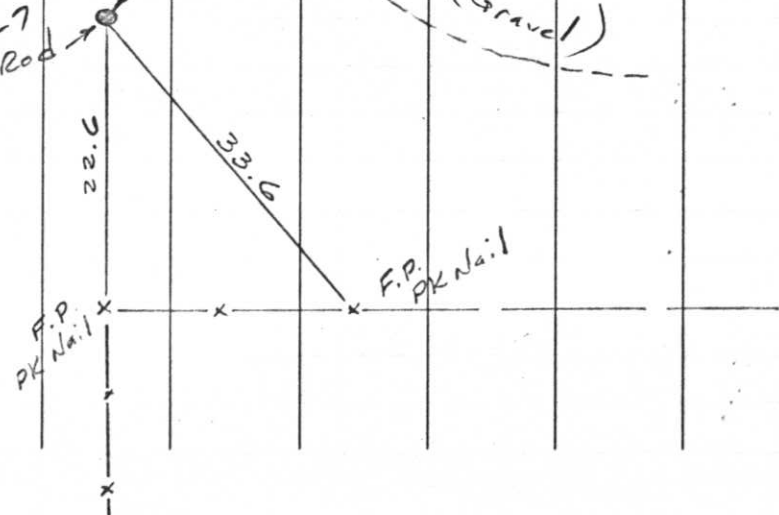
STATE OF IOWA
DEPARTMENT OF REVENUE



N 508, 773.11
E 2,084, 334.28
W. 1/4 Cor.
Sec. 30-32-7,
1" Iron Rod
Found by Scherer
6/25/70

REFERENCES

W. 1/4 Cor.
Sec. 30-32-7
1" Iron Rod



Project I.D. 1173-2-00 So. Co. Line
-1.4 Mi. N. Merrill U.S.H. 51
Freeway Lincoln County Wm. Scherer
Surveyor Received from Division of
Hwy's Jan. 11, 1973

196