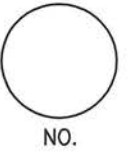


LINCOLN COUNTY U.S. PUBLIC LAND SURVEY MONUMENT LOCATION RECORD

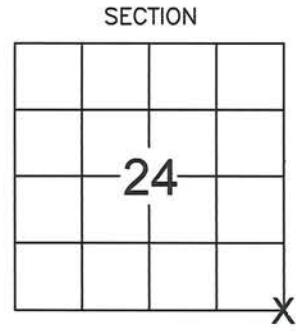
SECTION 24
TOWNSHIP 32 N
RANGE 6 E



LANDMARK BENCHMARK
CORNER IDENTITY: BERNSTEN SNM1 STEEL NAIL MARKER
FOUND SET
 RE-TIED

MERRILL
CITY, VILLAGE, TOWN

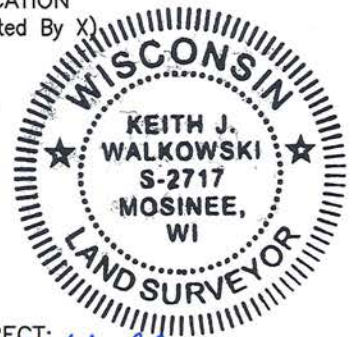
LINCOLN COUNTY COORDINATE: N: _____ E: _____
ELEVATION-(FEET): _____ DATUM: _____
WEATHER: CLOUDY
DATE OF SURVEY: 10-17-2013 TEMPERATURE: 45 °F
SURVEY PARTY: KEITH WALKOWSKI / DAVID TAUFERNER



BASIS FOR MONUMENT LOCATION: (DESCRIBE METHOD OF SURVEY AND CORNER AUTHENTICATION)

The Survey Marker Nail (SMP) of record and two ties were destroyed during the reconstruction of the intersection. A Bernsten Steel Nail Marker was set at the corner location. The record ties to the Northwest and Southeast were recovered. Two new ties were set as shown to reference the corner location.

LOCATION
(Indicated By X)



CERTIFIED CORRECT:

Keith J. Walkowski

KEITH WALKOWSKI S-2717

Registered Land Surveyor

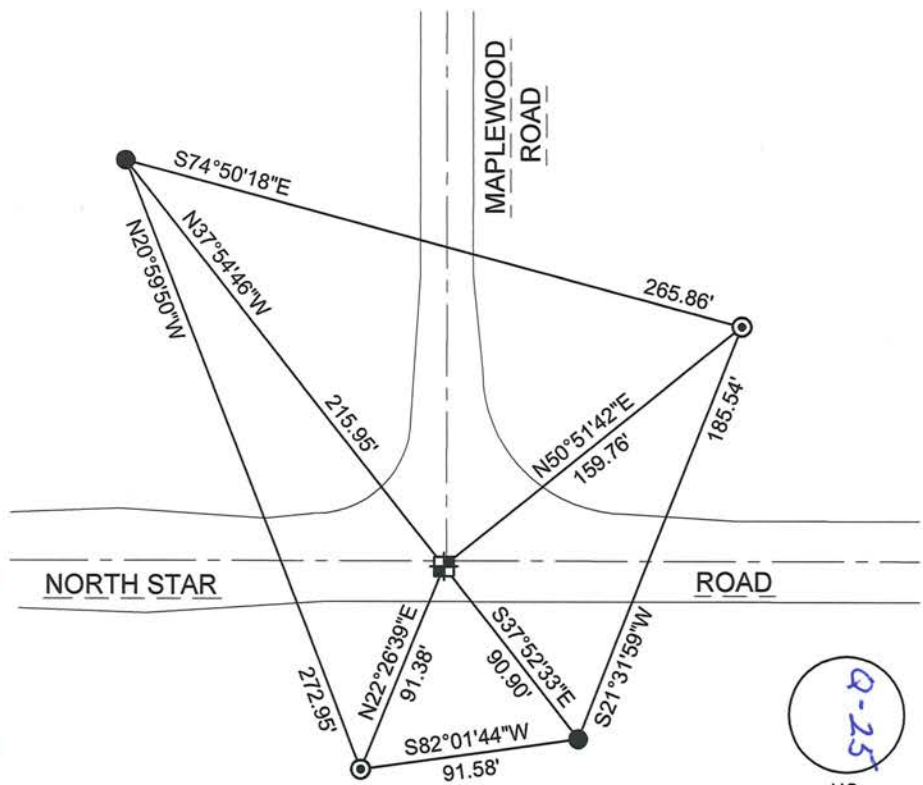
DATE: 10-22-13

FIELD BOOK NO. NA PAGE NO. NA
COMPANY RIVERSIDE LAND SURVEYING LLC

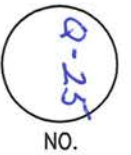
TIE SKETCH:

- SET BERNSTEN SNM1 STEEL NAIL MARKER
- SET WISDOT (SSDR130) BERNSTEN DRIVABLE MONUMENT CAP MARKER
- FOUND ALUMINUM CAP MONUMENT

1. BEARINGS ARE BASED ON THE LINCOLN COUNTY COORDINATE SYSTEM AND REFERENCED AS SHOWN
2. SCALE 1" = 80'



RECEIVED BY LINCOLN COUNTY
SURVEYOR THIS 11th DAY
OF November 20 13
Tony Dahl
COUNTY SURVEYOR



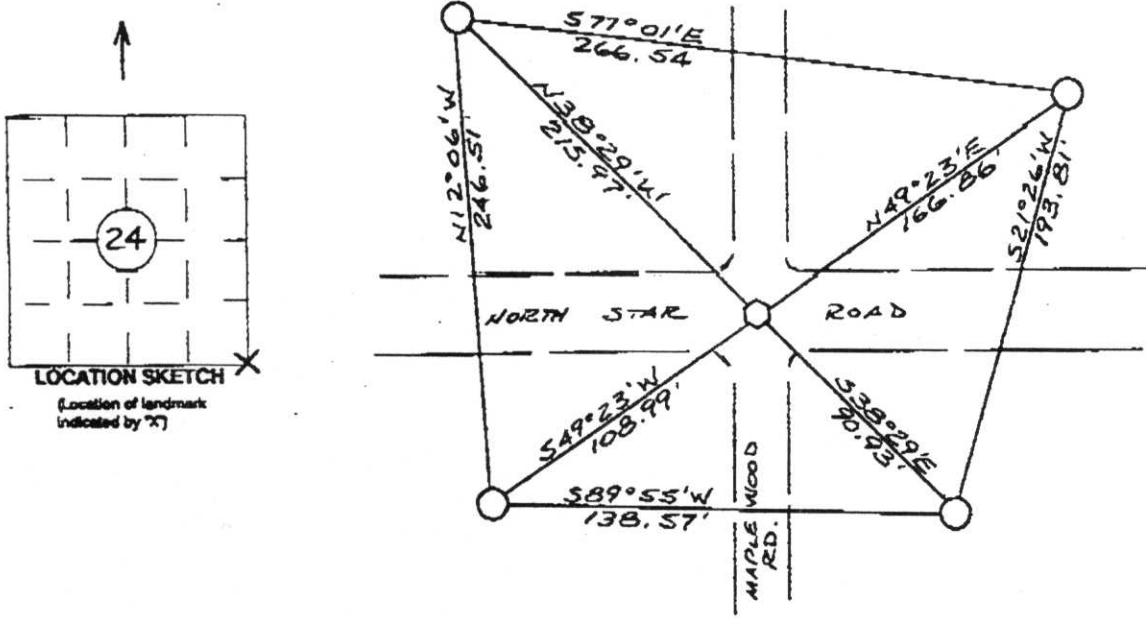
RECORD AND CERTIFICATION OF U.S. PUBLIC LAND SURVEY CONTROL STATION

Wisconsin Department of Transportation

ED715 687

District 7	Project ID 1176-01-00	Located By R.B. JOHNSON - SURVEY CREW CHIEF		
Corner SOUTHEAST COR.	Township T32N	Range (E,W) R6E	County LINCOLN	
Wisconsin Coordinates	East (X) 2,084,383.47	North (Y) 511,453.39	Elevation (Z)	Zone
Control Station Name	East (X)	North (Y)	Elevation (Z)	Zone
Horizontal - NORTH AMERICAN, 1927	CONTROL DATUM		Vertical - MEAN SEA LEVEL, 1929 ADJUSTMENT	
SURVEY CONTROL				
Horizontal - _____	Order	Vertical - _____	Order	

SKETCH



I hereby certify that on the date of OCT. 6, 1994
 the above corner was located by a marker and/or references established by
LAVERNE H. MOSHER 5-1188
(registered land surveyor) (registration no.)

I further certify that to perpetuate the location of said corner, on the date of
OCT. 6, 1994 at the exact location thereof,
 a permanent marker or witness monuments consisting of
FOUR 3" x 30" BERNTSEN MAGNETIC
ALUMINUM MONUMENTS
 were located as shown above.

Signature (District Survey Supervisor)
Jack R. Wallis - SURV. COR.

SOUTHEAST CORNER
 SECTION 24
 T32N TOWNSHIP
 R6E RANGE

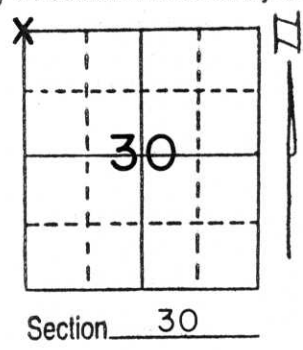
RECEIVED AT LINCOLN COUNTY
 COURTHOUSE THIS 18 DAY
 OF March 1998
Pat Phillip
 TAX DESCRIPTION OFFICE

Index No. Q-25

U.S. PUBLIC LAND SURVEY MONUMENT RECORD

Note: This form is intended and designed to fulfill all requirements of Wisconsin Administrative Code, Chapter A-E 5.02, U.S. Public Land Survey Monument Record (3) (a) (b) (c) (d) (e) (f) (g) (h) (i). An additional sheet may be added if necessary to conform with said requirements.

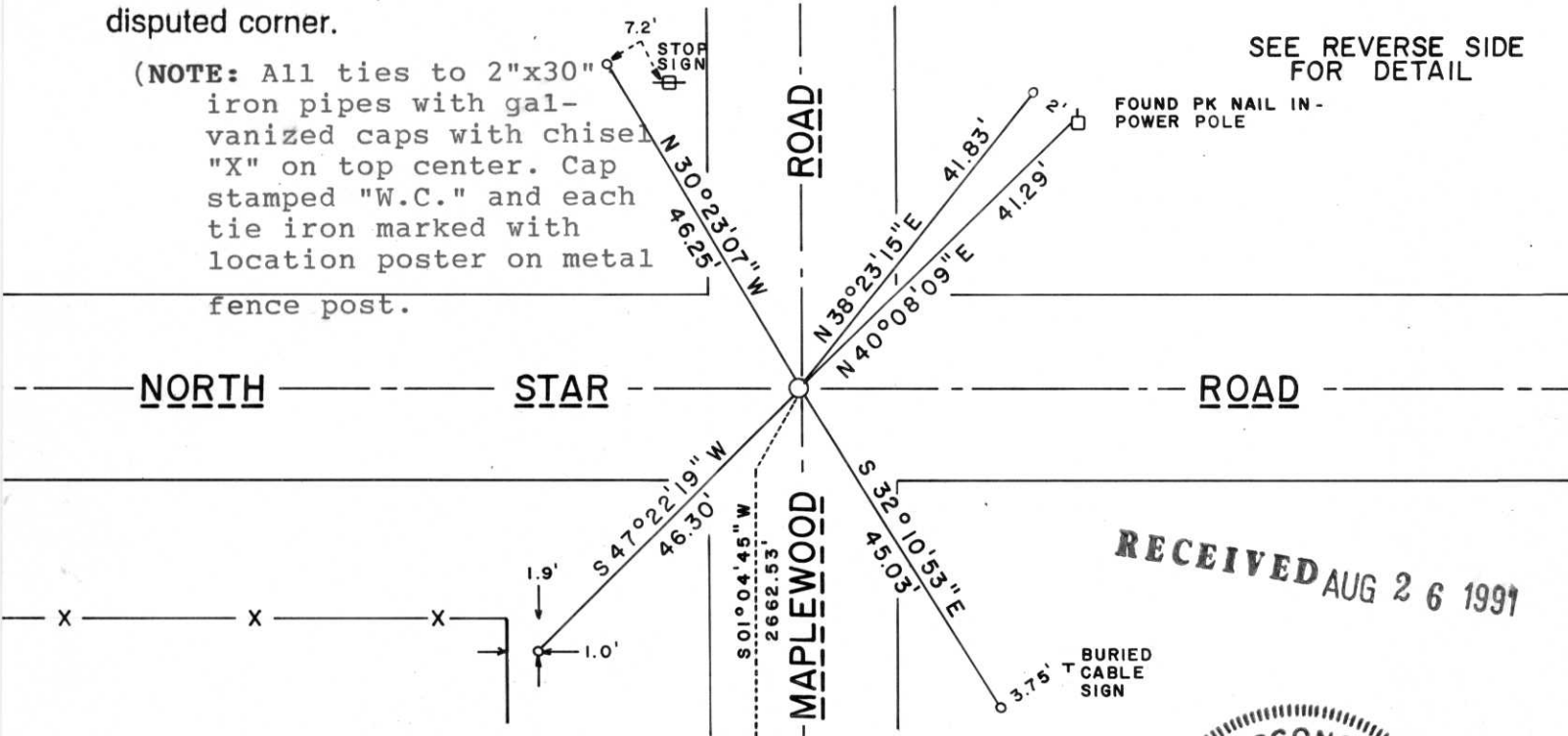
(a) Corner location: Township 32 North
 Range 7 East/West
 Town/City/Village MERRILL
 County LINCOLN



(b) (f) (g) (h) Description of monument found at this corner and if it was accepted, state all evidence (material, testimonial, occupational, plats, records, other monuments) used as a basis for accepting. If not accepted or if nothing was found, state evidence used as basis for establishing location. If reestablished through lost corner proportionate methods, indicate all monuments, distances and directions used to establish.

A 2" iron pipe was found at this location by William Scherer on June 25, 1970. He reset a RR spike over pipe and took ties to power pole (NE--41.2'), wood hub (SW--45.3'), and wood hub (SE--46.0'). On this date we recovered 2 RR spikes at roadway surface. We also recovered the PK nail tie in power pole (NE) and one wood hub (SW), both set by William Scherer, R.L.S. Tied out both RR spikes, removed same and opened a 3" diameter hole in bituminous roadway surface. Found 2" iron pipe noted by Scherer on 6/26/70 about 6 inches below roadway surface. Left 2" pipe in place. Set out four witness monuments and tied out pipe. Set an aluminum Berntsen monument at road surface directly over pipe.

(c) (d) (e) Plan view of corner with ties to at least 4 witness monuments. If in disagreement with previously established corner, show the distances between the two corners and also indicate the ties to the disputed corner.



(NOTE: All ties to 2"x30" iron pipes with galvanized caps with chisel "X" on top center. Cap stamped "W.C." and each tie iron marked with location poster on metal fence post.

RECEIVED AUG 26 1991

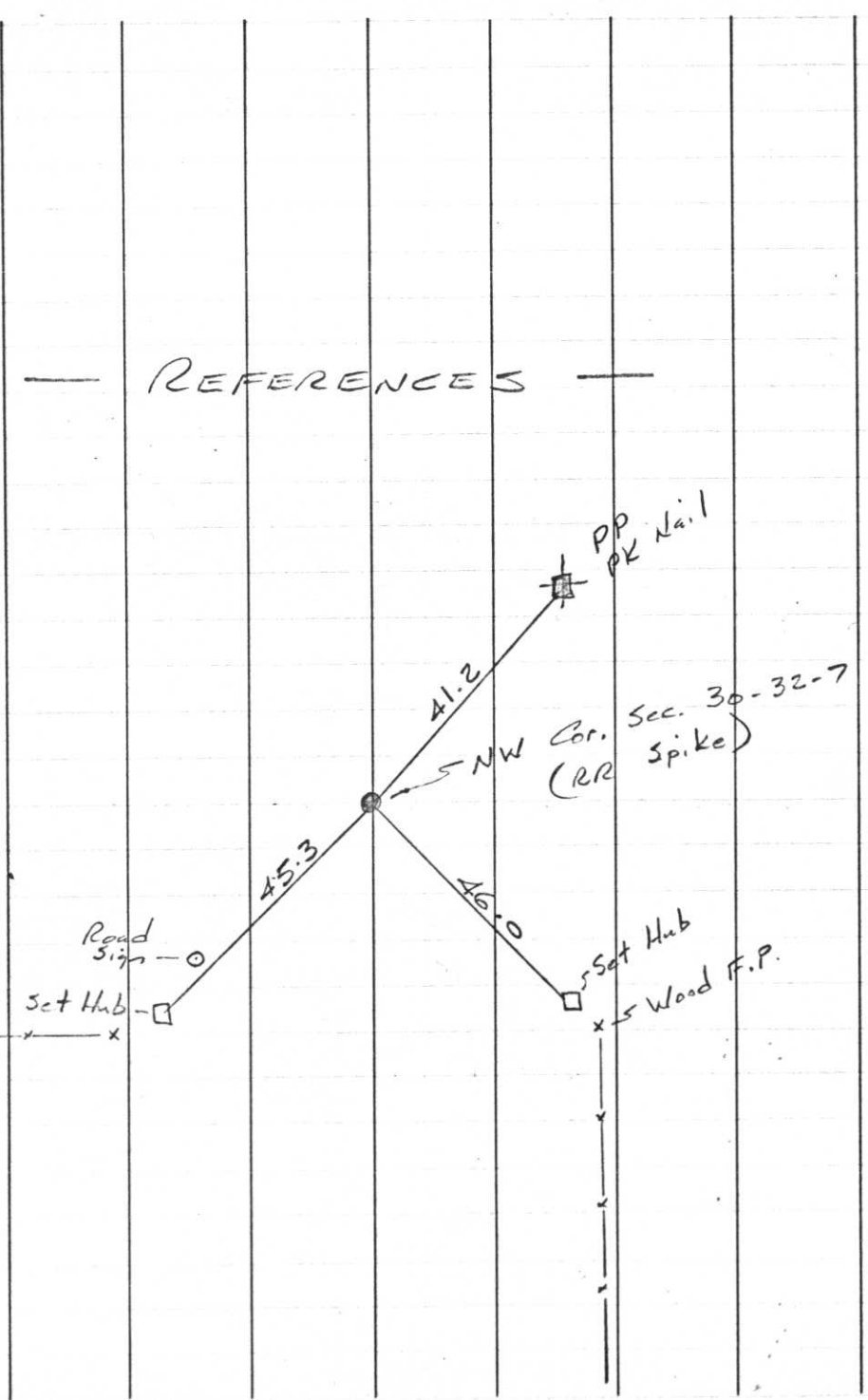


(i) I, Laverne H. Mosher
 (type or print name) certify that the corner location on this record was determined by me or under my direction and control and that this U.S. Public Land Survey Monument Record is correct and complete to the best of my knowledge and belief.

Laverne H. Mosher AUGUST 2, 1991
 Signature Date

Index No. Q-1

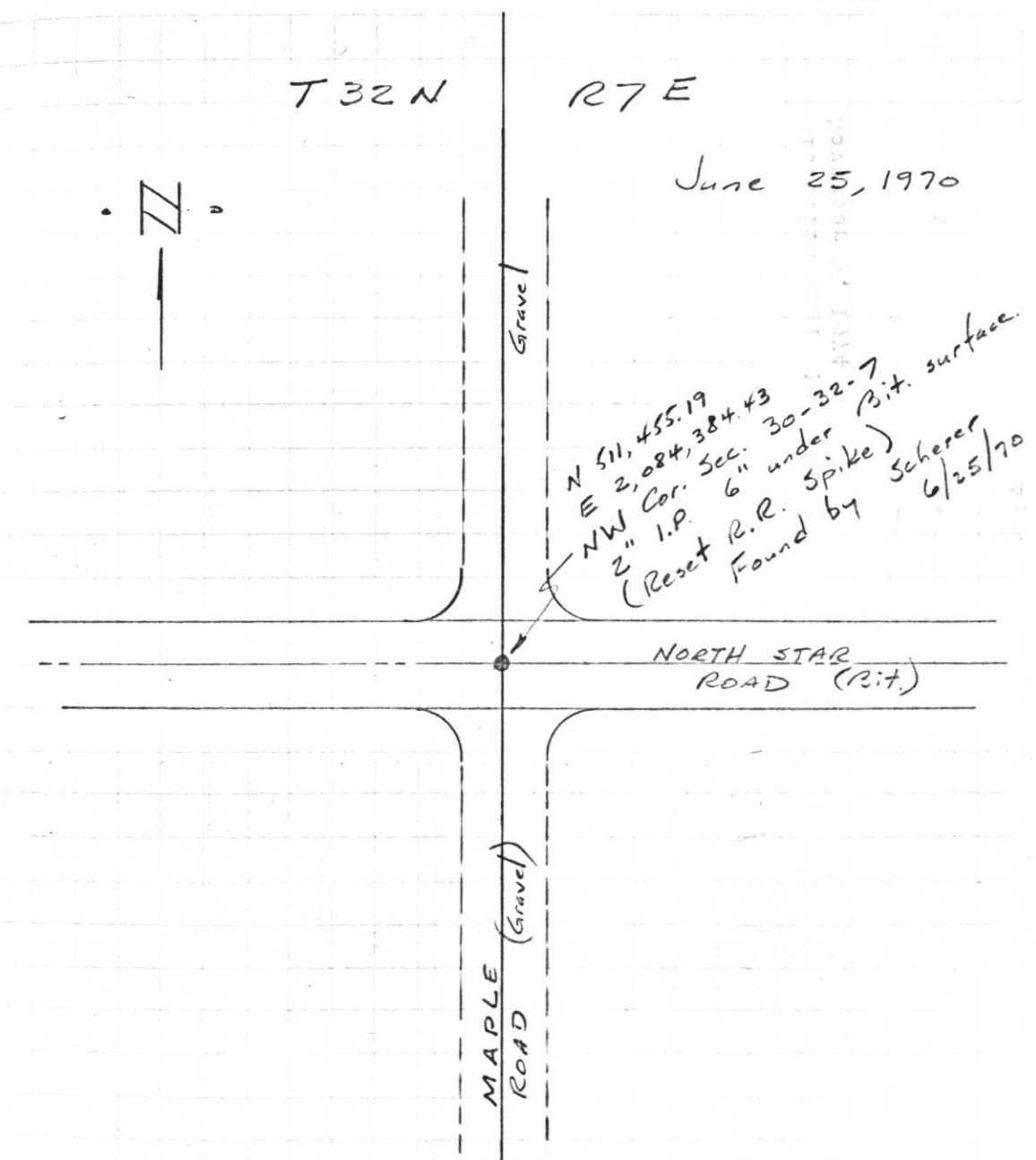
REFERENCES



T 32 N

R 7 E

June 25, 1970



Project I.D. 1173-2-00 So. Co. Line
 -1.4 Mi. N. Merrill U.S.H. 51
 Freeway Lincoln County Wm. Scherer
 Surveyor Received from Division of
 Hwy's Jan. 11, 1973