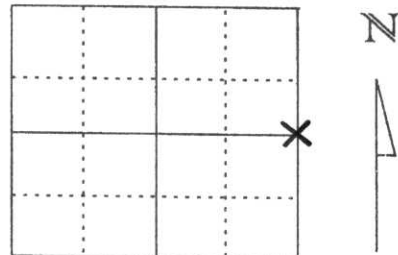


U.S. PUBLIC LAND SURVEY MONUMENT RECORD

Note: This form is intended and designed to fulfill all requirements of Wisconsin Administrative Code, Chapter A-E 5.02, U.S. Public Land Survey Monument Record (3) (a) (b) (c) (d) (e) (f) (g) (h) (i). An additional sheet may be added if necessary to conform with said requirements.

(a) Corner location: Township 32 North
 Range 6 East
 Town/City/Village MERRILL
 County Lincoln

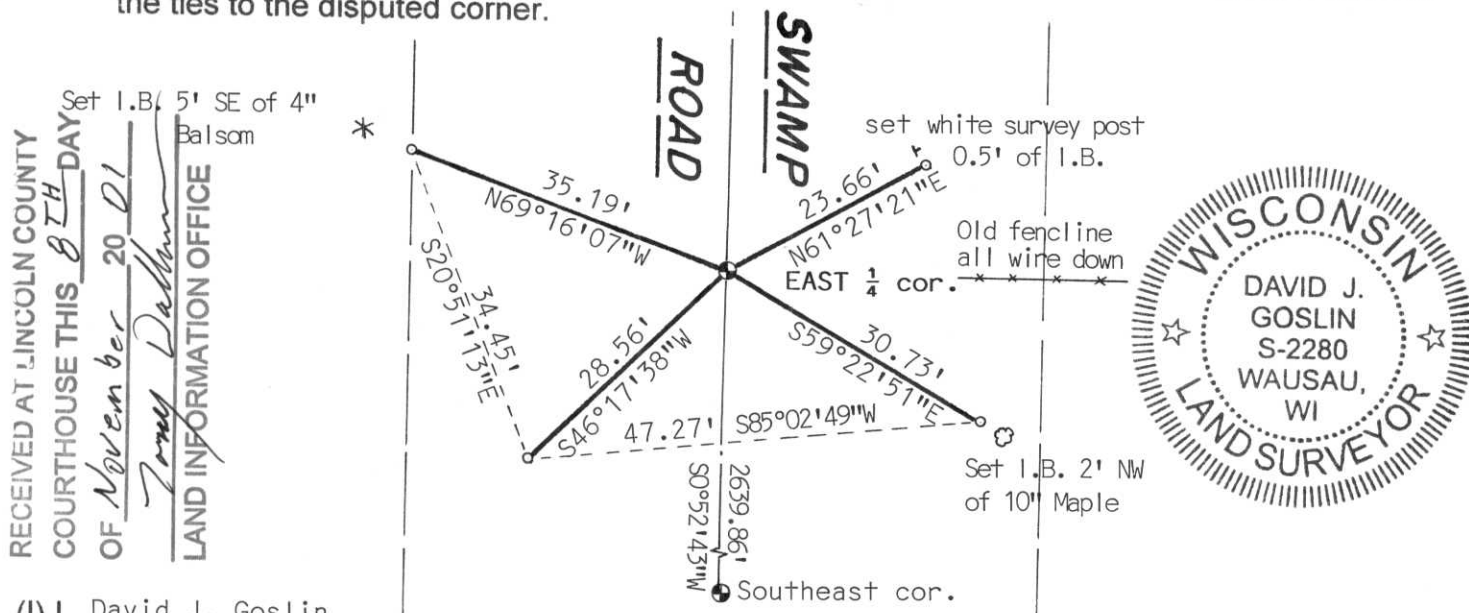


Section 22

(b) (f) (g) (h) Description of monument found at this corner and if it was accepted, state all evidence (material, testimonial, occupational, plats, records, other monuments) used as a basis for accepting. If not accepted or if nothing was found, state evidence used as basis for establishing location. If reestablished through lost corner proportionate methods, indicate all monuments, distances and directions used to establish.

Original Section corner was a wood post witnessed by Fir 14" S34°E 8 links
 Hemlock 12" S81°W 13 links
 set by Albert Ellis and Frederick Ellis Deputy Surveyors in January of 1852.
 On October 4, 2001 David Goslin and Jason Mohr and the Lincoln County Highway Department dug for this corner at the intersection of an old fence line to the east and swamp road. We dug 6' North and South of fence line and the entire width of Swamp Road and 5' deep and found no evidence of corner. We set a Lincoln County Berntsen Monument on the fenceline to the east and the center of Swamp Road as the best evidence of corner location. This location fits the 40 line fence to the South well. Berntsen monument is set 0.8' below road surface.

(c) (d) (e) Plan view of corner with ties to at least 4 witness monuments. If in disagreement with previously established corner, show the distances between the two corners and also indicate the ties to the disputed corner.



RECEIVED AT LINCOLN COUNTY
 COURTHOUSE THIS 8TH DAY
 OF November 20⁰¹
Tony Dalton
 LAND INFORMATION OFFICE



(I) I, David J. Goslin

(type or print name) certify that the corner location on this record was determined by me or under my direction and control and that this U.S. Public Land Survey Monument Record is correct and complete to the best of my knowledge and belief.

David J. Goslin
 Signature

10-30-01
 Date

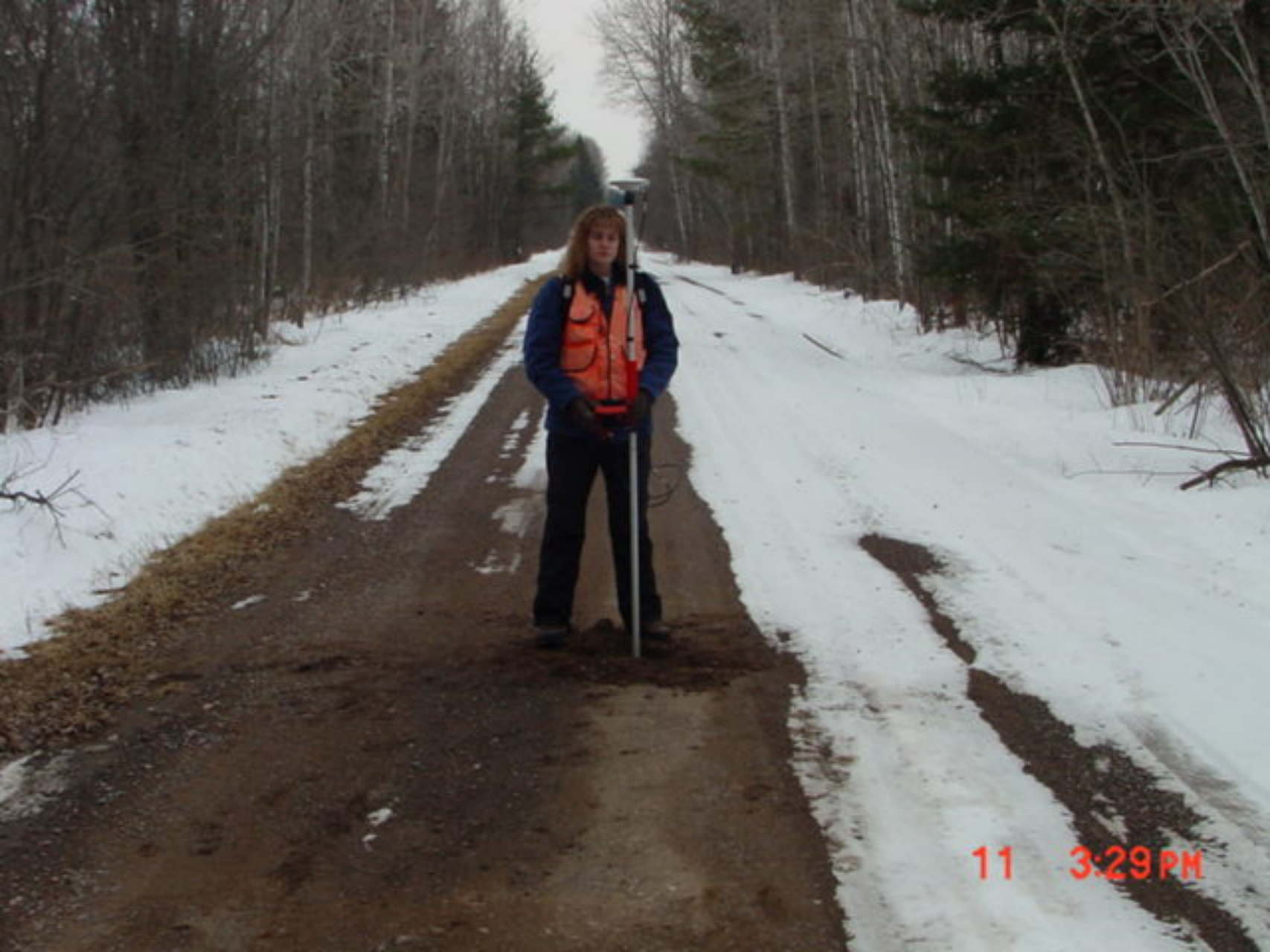
Index No. 0-17

LINCOLN COUNTY
LION DISTRICT
MAY 1901

11 3:25 PM



11 3:30 PM



11 3:29 PM