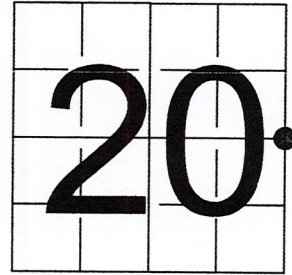


# U S PUBLIC LAND SURVEY MONUMENT RECORD

NOTE: This form is intended and designed to fulfill all requirements of Wisconsin Administrative Code, Chapter A-E 7.08 U.S. Public Land Survey Monument Record (3) (a-i)

A-E 7.08(3)(a) Identity of corner:  
 EAST 1/4 CORNER SECTION 20,  
 TOWNSHIP 32 NORTH,  
 RANGE 06 EAST OF THE 4TH PM,  
 TOWN OF ROCK FALLS,  
 COUNTY OF LINCOLN

WISCORS - LINCOLN COUNTY  
 N: 145,273.809 USft (145,273.809)  
 E: 375,469.166 USft (375,469.100)  
 Datum: NAD83 (2011)  
 GNSS Method RTN - Direct  
 GNSS Control WISCORS VRS



The coordinate value shown has been verified by the average of two or more GPS observations at a markedly different time. Coordinates shown in parenthesis are provided by Lincoln County.

A-E 7.08(3)(b)

Original Surveyor: Albert G. and Fredrick S. Ellis

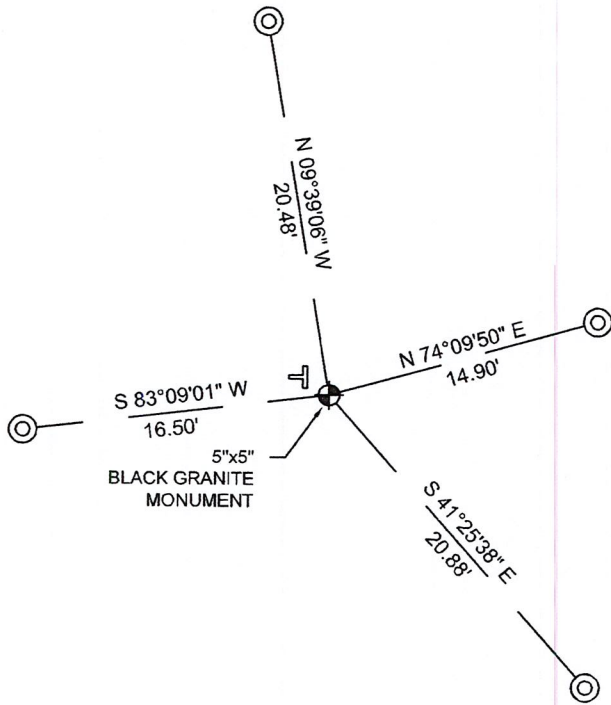
Date of Original Survey Commenced: April 16, 1852  
 Completed: April 29, 1852

Original Accessories:  
 Hemlock 10 S 68° E 32 links  
 Hemlock 11 N 69° W 37 links

1941 - Francis X. Fox (aka Francis X. Fuchs) - Survey of TWP., 32 & 33 N. ~ R.6 E. Town of Rock Falls - indicates "set corners to all forties on all quarter & section lines" on Map M136A.

December 9, 2022- While performing the 2022 Lincoln County PLSS Corner Remonumentation and GPS Services project, I found a 5"x 5" black granite stone near the computed position provided by Lincoln County. Monument is in a wet alder swamp. I established 4 new reference monuments as shown below.

A-E 7.08(3)(c)(d) Plan view of corner with references to at least 4 witness monuments.



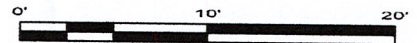
BEARINGS LISTED TO THE NEAREST SECOND ARE REFERENCED TO WISCONSIN COUNTY COORDINATE REFERENCE SYSTEM - LINCOLN COUNTY ZONE. ALL OTHER BEARINGS ARE MAGNETIC



RECEIVED BY LINCOLN COUNTY SURVEYOR THIS 27<sup>TH</sup> DAY OF December 20 22  
 Jeffrey DeMuth  
 COUNTY SURVEYOR

## LEGEND

- 5" x 5" black granite monument, found
- 1" diameter X 32" long - aluminum pipe with 2.5" diameter aluminum cap, set
- Vinyl T-post, set ±4.2 feet NW of corner

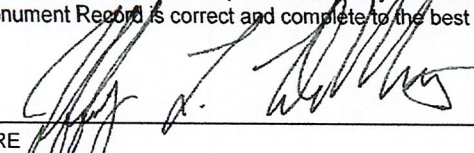


A-E 7.08(3)(e) 1852 Surveyor set a post, 1941 Surveyor set a granite stone monument. I found a 5" x 5" black granite stone.

A-E 7.08(3)(f) I accept this monument as a FOUND PERPETUATED LOCATION of the corner.

A-E 7.08(3)(g)(h) This corner was not determined through lost-corner-proportionate methods.

A-E 7.08(3)(i) I, Jeffrey L. DeMuth, Professional Land Surveyor No. S-2656, hereby certify that the corner location on this record was determined by the Lincoln County Surveyor, and the monuments found or set as shown hereon were measured by me or under my direction and control, and that this U.S. Public Land Survey Monument Record is correct and complete to the best of my knowledge, and belief.

SIGNATURE  DATE December 14, 2022



6-9



4327 Cole Road, Crandon, WI 54520  
James E. Anderson - 715.784.3485  
Jeffrey L. DeMuth – 715.482.5237  
Cardinal.north@outlook.com

## REPORT

### 2022-Lincoln County PLSS Corner Remonumentation and GPS Services

Wisconsin Corner Point Identification Number: 43206202000

Surveyor: Jeffrey L. DeMuth – S2656

Corner monument: Found 5" x 5" black granite stone.

Field Book: Cardinal North – Lincoln Co. Remon. – 2022-00

Page: 80

Horizontal Datum: WisCRS – Lincoln County Zone – NAD83(2011)

Date / time of initial measurement:

December 9, 2022 - Start 12:00:07 CST – End 12:20:30 CST

Reference monuments:

4 – Set - 1" diameter X 32" long aluminum pipe with 2.5" diameter Lincoln Co. aluminum cap.

#### Coordinate Table

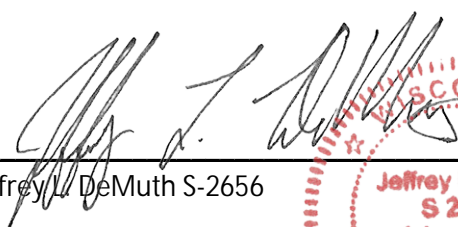
	County Provided	2022 Measurement	Difference
North	145273.809	145273.809	0.00
East	375469.100	375469.166	-0.07

Observed coordinates match with existing coordinates within reason.


Request Data Log for more information.

Additional Notes:

Corner falls in a wet alder swamp.

  
Jeffrey L. DeMuth S-2656

December 12, 2022  
Date





43206202000\_Mon-N





43206202000\_North





43206202000\_West





43206202000\_South





43206202000\_East

