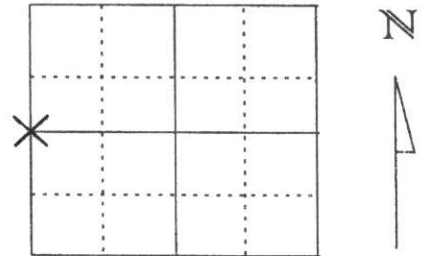


U.S. PUBLIC LAND SURVEY MONUMENT RECORD

Note: This form is intended and designed to fulfill all requirements of Wisconsin Administrative Code, Chapter A-E 5.02, U.S. Public Land Survey Monument Record (3) (a) (b) (c) (d) (e) (f) (g) (h) (i). An additional sheet may be added if necessary to conform with said requirements.

(a) Corner location: Township 32 North
 Range 6 East
 Town/City/Village ROCK FALLS
 County Lincoln

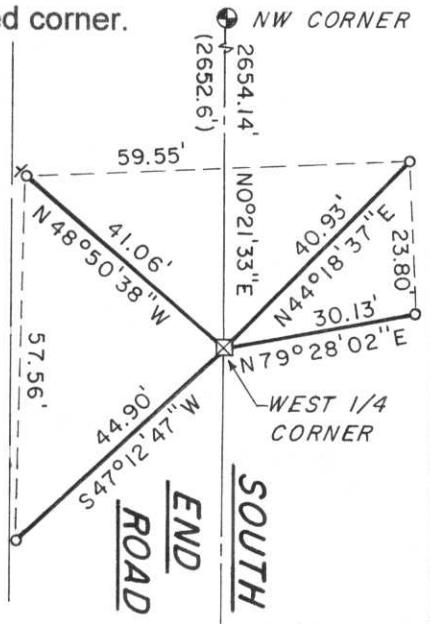


Section 20

(b) (f) (g) (h) Description of monument found at this corner and if it was accepted, state all evidence (material, testimonial, occupational, plats, records, other monuments) used as a basis for accepting. If not accepted or if nothing was found, state evidence used as basis for establishing location. If reestablished through lost corner proportionate methods, indicate all monuments, distances and directions used to establish.

IN APRIL OF 1852 A. G. ELLIS AND F. S. ELLIS SET POST FOR WEST 1/4 CORNER WITH THE FOLLOWING TIES: HEMLOCK 8 WEST 7 LINKS, HEMLOCK 10 N52°E 27 LINKS.
 IN 1943 FRANCIS FOX SET 1/4 STONE AT CENTERLINE OF ROAD AS WITNESSED BY TWO IRON PIPES. OFFSET IRON PIPE EAST 24.75'.
 I HAD LINCOLN COUNTY DIG FOR CORNER IN THE CENTER OF SOUTH END ROAD AT CORNER LOCATION. WE FOUND POLISHED 6" X 6" RED GRANITE MONUMENT DOWN 6". TOP OF STONE HAD A HOLE IN CENTER WITH CARVED SECTION NUMBERS. ACCEPTED STONE AS WEST 1/4 CORNER AND TIED OUT AS SHOWN BELOW.

(c) (d) (e) Plan view of corner with ties to at least 4 witness monuments. If in disagreement with previously established corner, show the distances between the two corners and also indicate the ties to the disputed corner.



- LEGEND**
- ☒ EXISTING 6" X 6" RED GRANITE MONUMENT WITH POLISHED TOP
 - SET 3/8" X 30" RE-BAR WITH LINCOLN COUNTY ALUMINUM CAP
 - LINCOLN COUNTY BERNTSEN MONUMENT
 - + (WWP) WHITE WITNESS POST

RECEIVED BY LINCOLN COUNTY SURVEYOR THIS 9TH DAY OF January 20 06
[Signature]
 COUNTY SURVEYOR

(I) I, DAVID J. GOSLIN

(type or print name) certify that the corner location on this record was determined by me or under my direction and control and that this U.S. Public Land Survey Monument Record is correct and complete to the best of my knowledge and belief.

David J. Goslin
 Signature



1-9-06
 Date

Index No. 0-5

19-20







