

U.S. PUBLIC LAND SURVEY MONUMENT RECORD

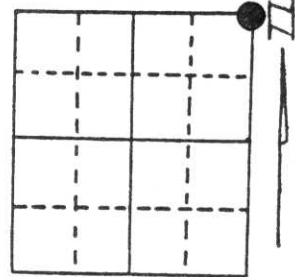
Note: This form is intended and designed to fulfill all requirements of Wisconsin Administrative Code, Chapter A-E 5.02, U.S. Public Land Survey Monument Record (3) (a) (b) (c) (d) (e) (f) (g) (h) (i). An additional sheet may be added if necessary to conform with said requirements.

(a) Corner location: Township 32 North

Range 6 East

Town/City/Village TN. OF MERRILL

County LINCOLN



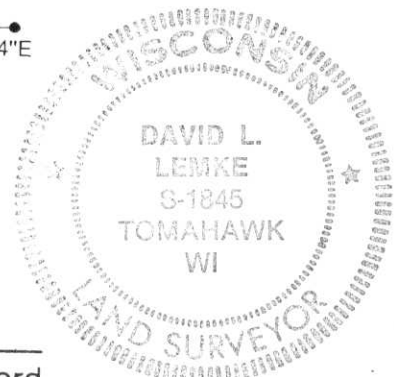
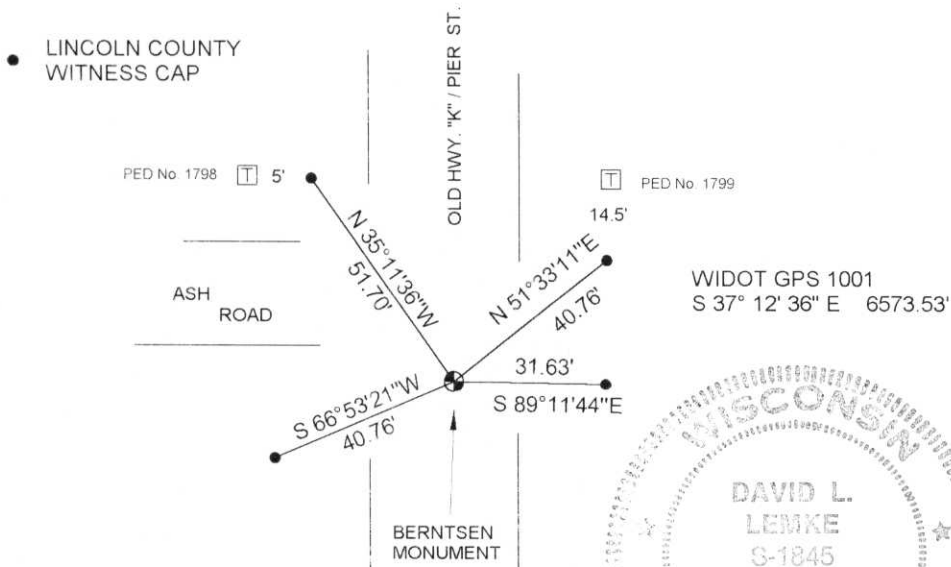
Section 23

(b) (f) (g) (h) Description of monument found at this corner and if it was accepted, state all evidence (material, testimonial, occupational, plats, records, other monuments) used as a basis for accepting. If not accepted or if nothing was found, state evidence used as basis for establishing location. If reestablished through lost corner proportionate methods, indicate all monuments, distances and directions used to establish.

CORNER HISTORY ON FILE IN COUNTY SURVEYORS OFFICE

APRIL 1997 FOUND 8" BRIDGE SPIKE IN CENTER OF PIER ST. 16.5' SOUTH OF IT'S INTERSECTION OF ASH ROAD RUNNING TO THE WEST. EXCAVATED THE AREA WELL BELOW THE ROAD BED AND FOUND NO FURTHER EVIDENCE OF CORNER LOCATION. SET BERNTSEN MONUMENT AT SPIKE LOCATION.

(c) (d) (e) Plan view of corner with ties to at least 4 witness monuments. If in disagreement with previously established corner, show the distances between the two corners and also indicate the ties to the disputed corner.



(i) I, DAVID L. LEMKE S-1845

(type or print name) certify that the corner location on this record was determined by me or under my direction and control and that this U.S. Public Land Survey Monument Record is correct and complete to the best of my knowledge and belief.

Signature

David L. Lemke

Date

MAY 30 1997

RECEIVED AT LINCOLN COUNTY COURTHOUSE THIS 2nd DAY OF June 19 97
 OF Pat Priebe
 TAX DESCRIPTION OFFICE

Index No. M-21



2002 9 24



2002 9 24



2002 9 25