

# U.S. PUBLIC LAND SURVEY MONUMENT RECORD

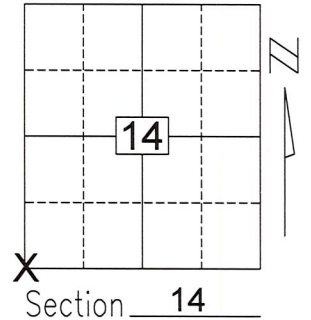
Note: This form is intended and designed to fulfill all requirements of Wisconsin Administrative Code, Chapter A-E 5.02, U.S. Public Land Survey Monument Record (3)(a)(b)(c)(d)(e)(f)(g)(h)(i). An additional sheet may be added if necessary to conform with said requirements.

(a) Corner location: Township 32 North

Range 6 East

Town/City/Village MERRILL

County LINCOLN

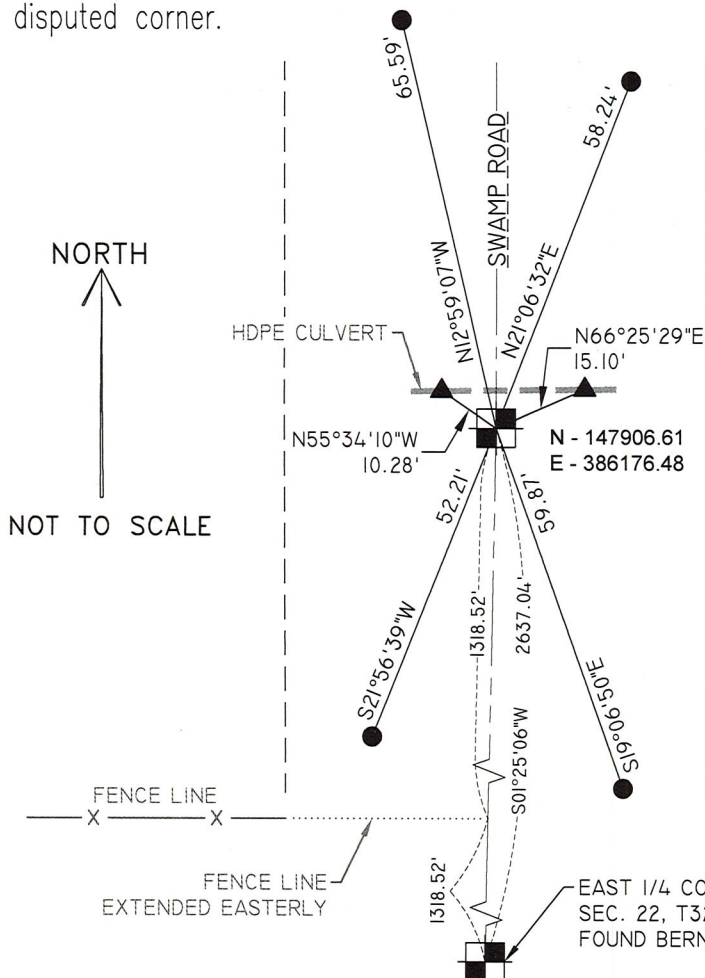


(b)(f)(g)(h) Description of monument found at this corner and if it was accepted, state all evidence (material, testimonial, occupational, plats, records, other monuments) used as a basis for accepting. If not accepted or if nothing was found, state evidence used as basis for establishing location. If reestablished through lost corner proportionate methods, indicate all monuments, distances and directions used to establish.

In 2001, David Goslin dug for this corner at a distance of ±2633 feet from the East 1/4 corner of Section 22. Nothing was found and no monument and no ties were set.

I searched the area and no further evidence was found. Monument was set by doubling the fence line distance as shown on David Goslin's tiesheet and centered on the traveled centerline of Swamp Road. The monumented corner was tied out as shown below.

(c)(d)(e) Plan view of corner with ties to at least 4 witness monuments. If in disagreement with previously established corner, show the distances between the two corners and also indicate the ties to the disputed corner.



- ▲ - SET PK NAIL ON TOP OF CULVERT
- - SET 1 1/4" x 18" IRON PIPE WEIGHING 1.68 LBS/LIN. FT.
- - SET 1 1/4" x 18" IRON BAR WEIGHING 4.303 LBS/LIN. FT. 6" BELOW ROAD SURFACE

RECEIVED BY LINCOLN COUNTY SURVEYOR THIS 19TH DAY OF October 20 23

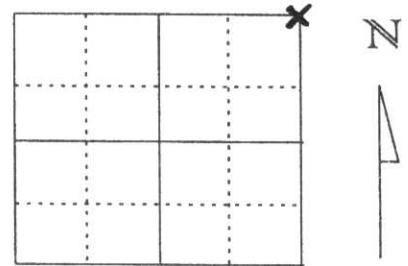
*Jerry Dull*  
COUNTY SURVEYOR

(i) I, Jesse L. Roberge, PLS S-2958, certify that the corner location on this record was determined by me or under my direction and control and that this U.S. Public Land Survey Monument Record is correct and complete to the best of my knowledge and belief.

# U.S. PUBLIC LAND SURVEY MONUMENT RECORD

Note: This form is intended and designed to fulfill all requirements of Wisconsin Administrative Code, Chapter A-E 5.02, U.S. Public Land Survey Monument Record (3) (a) (b) (c) (d) (e) (f) (g) (h) (l). An additional sheet may be added if necessary to conform with said requirements.

(a) Corner location: Township 32 North  
 Range 6 East  
 Town/City/Village MERRILL  
 County Lincoln

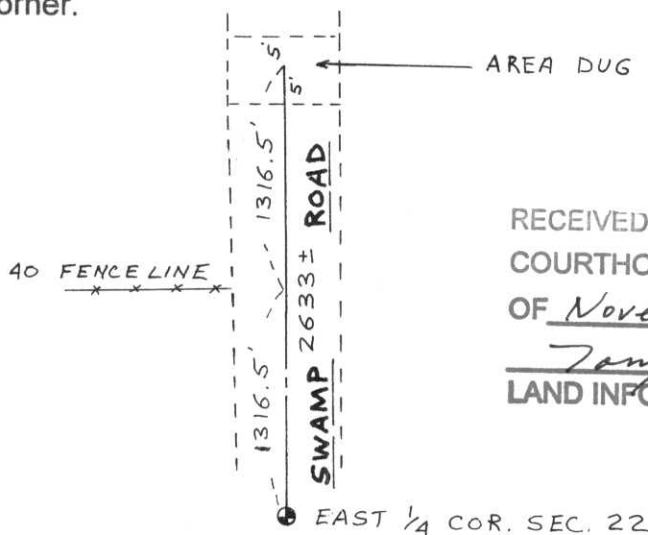


Section 22

(b) (f) (g) (h) Description of monument found at this corner and if it was accepted, state all evidence (material, testimonial, occupational, plats, records, other monuments) used as a basis for accepting. If not accepted or if nothing was found, state evidence used as basis for establishing location. If reestablished through lost corner proportionate methods, indicate all monuments, distances and directions used to establish.

We dug at 2633 ± feet north of the East 1/4 corner of Section 22. We dug the entire width of Swamp Road at this location and found no evidence of the corner. This distance we dug at was by doubling the 40 fence line to the south as shown below. With no evidence found and no lines of occupation we did not set this corner at this time.

(c) (d) (e) Plan view of corner with ties to at least 4 witness monuments. If in disagreement with previously established corner, show the distances between the two corners and also indicate the ties to the disputed corner.



RECEIVED AT LINCOLN COUNTY  
 COURTHOUSE THIS 27<sup>th</sup> DAY  
 OF November 20 01  
*Tony Dalton*  
 LAND INFORMATION OFFICE

(l) I, DAVID J. GOSLIN  
 (type or print name) certify that the corner location on this record was determined by me or under my direction and control and that this U.S. Public Land Survey Monument Record is correct and complete to the best of my knowledge and belief.

*David J. Goslin*  
 Signature

10-26-01  
 Date

Index No. M-17