

# U S PUBLIC LAND SURVEY MONUMENT RECORD

NOTE: This form is intended and designed to fulfill all requirements of Wisconsin Administrative Code, Chapter A-E 7.08 U.S. Public Land Survey Monument Record (3) (a-i)

A-E 7.08(3)(a) Identity of corner:  
 SOUTH 1/4 CORNER SECTION 17,  
 TOWNSHIP 32 NORTH,  
 RANGE 06 EAST OF THE 4TH PM,  
 TOWN OF ROCK FALLS,  
 COUNTY OF LINCOLN

WISCORS - LINCOLN COUNTY  
 N: 147,921.605 USft (147,921.420)  
 E: 372,917.394 USft (372,917.229)  
 Datum: NAD83 (2011)  
 GNSS Method RTN - Direct  
 GNSS Control WISCORS VRS



The coordinate value shown has been verified by the average of two or more GPS observations at a markedly different time. Coordinates shown in parenthesis are provided by Lincoln County.

A-E 7.08(3)(b)

Original Surveyor: Albert G. and Fredrick S. Ellis

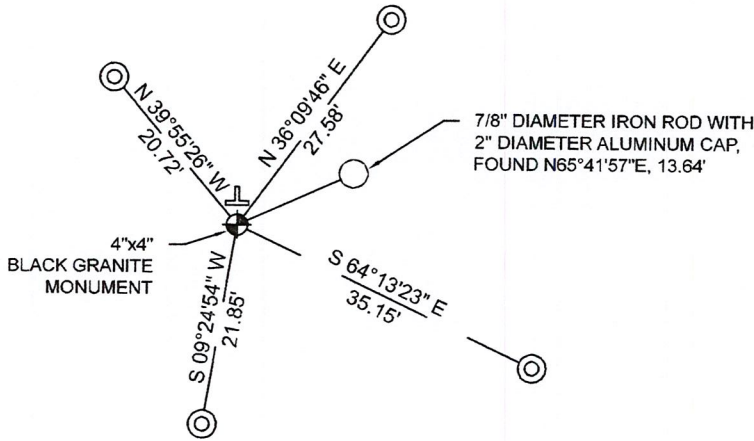
Date of Original Survey	Commenced:	April 16, 1852	Original Accessories:		
	Completed:	April 29, 1852	Birch	8	S 23° E 37 links
			Birch	8	N 8° W 24 links

1941 - Francis X. Fox (aka Francis X. Fuchs) - Survey of TWP., 32 & 33 N. ~ R.6 E. Town of Rock Falls - indicates "set corners to all forties on all quarter & section lines" on Map M136A.

December 8, 2022 - While performing the 2022 Lincoln County PLSS Corner Remonumentation and GPS Services project, I found a 4"x4" black granite stone near the computed position provided by Lincoln County. I established 4 new reference monuments as shown below.

A-E 7.08(3)(c)(d) Plan view of corner with references to at least 4 witness monuments.

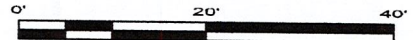
BEARINGS LISTED TO THE NEAREST SECOND ARE REFERENCED TO WISCONSIN COUNTY COORDINATE REFERENCE SYSTEM - LINCOLN COUNTY ZONE. ALL OTHER BEARINGS ARE MAGNETIC



RECEIVED BY LINCOLN COUNTY SURVEYOR THIS 27<sup>TH</sup> DAY OF December 20 22  
*Jeffrey DeMuth*  
 COUNTY SURVEYOR

## LEGEND

- 4" x 4" black granite monument, found
- 1" diameter X 32" long - aluminum pipe with 2.5" diameter aluminum cap, set
- Vinyl T-post, set ±2.2 feet north of corner



A-E 7.08(3)(e) 1852 Surveyor set a post, 1941 Surveyor set a granite stone monument. I found a 4" x 4" black granite stone.

A-E 7.08(3)(f) I accept this monument as a FOUND PERPETUATED LOCATION of the corner.

A-E 7.08(3)(g)(h) This corner was not determined through lost-corner-proportionate methods.

A-E 7.08(3)(i) I, Jeffrey L. DeMuth, Professional Land Surveyor No. S-2656, hereby certify that the corner location on this record was determined by the Lincoln County Surveyor, and the monuments found or set as shown hereon were measured by me or under my direction and control, and that this U.S. Public Land Survey Monument Record is correct and complete to the best of my knowledge, and belief.

*Jeffrey L. DeMuth*

December 14, 2022

SIGNATURE

DATE



M-7

## REPORT

### 2022-Lincoln County PLSS Corner Remonumentation and GPS Services

Wisconsin Corner Point Identification Number: 43206170020

Surveyor: Jeffrey L. DeMuth – S2656

Corner monument: Found 4" x 4" black granite stone.

Field Book: Cardinal North – Lincoln Co. Remon. – 2022-00

Page: 79

Horizontal Datum: WisCRS – Lincoln County Zone – NAD83(2011)

Date / time of initial measurement:

December 8, 2022 - Start 13:58:47 CST – End 14:23:40 CST

Reference monuments:

4 – Set - 1" diameter X 32" long aluminum pipe with 2.5" diameter Lincoln Co. aluminum cap.

1 – Found – 7/8" diameter iron rod with 2" diameter aluminum cap.

#### Coordinate Table

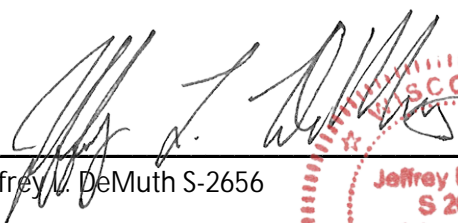
	County Provided	2022 Measurement	Difference
North	147921.420	147921.605	-0.18
East	372917.229	372917.394	-0.16

Observed coordinates match with existing coordinates within reason.

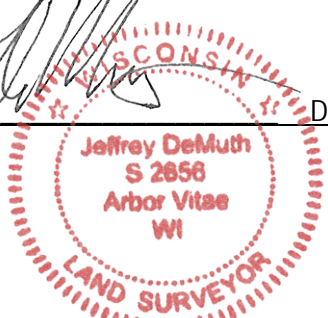
Request Data Log for more information.

Additional Notes:

Corner falls on the edge of a tamarack swamp.

  
Jeffrey L. DeMuth S-2656

December 12, 2022  
Date



43206170020\_Mon-N



43206170020\_North



43206170020\_West



43206170020\_South



43206170020\_East

